

Memorandum



DATE September 5, 2017

TO Honorable Members of the Public Safety and Criminal Justice Committee:
B. Adam McGough (Chair), Philip T. Kingston (Vice Chair),
Jennifer S. Gates (Domestic Violence Task Force Chair), MPT Dwaine R. Caraway,
DMPT Adam Medrano, Sandy Greyson, Kevin Felder

SUBJECT **Monthly Crime Report**

On Monday, September 11, 2017, you will be briefed on the Dallas Police Department's Monthly Crime Report by Chief of Police U. Renee Hall. The briefing materials are attached for your review.

Please contact me if you have any questions or need additional information.

Jon Fortune
Assistant City Manager

[Attachment]

cc: Honorable Mayor and Members of the City Council
T.C. Broadnax, City Manager
Larry Casto, City Attorney
Craig D. Kinton, City Auditor
Biliera Johnson, City Secretary (Interim)
Daniel F. Solis, Administrative Judge
Kimberly Bizor Tolbert, Chief of Staff to the City Manager
Majed A. Al-Ghafry, Assistant City Manager

Jo M. (Jody) Puckett, Assistant City Manager (Interim)
Joey Zapata, Assistant City Manager
M. Elizabeth Reich, Chief Financial Officer
Nadia Chandler Hardy, Chief of Community Services
Raquel Faveia, Chief of Economic Development & Neighborhood Services
Theresa O'Donnell, Chief of Resilience
Directors and Assistant Directors

Monthly Crime Report

Public Safety and Criminal Justice Committee

September 11, 2017

U. Renee Hall, Chief of Police
Dallas Police Department
City of Dallas



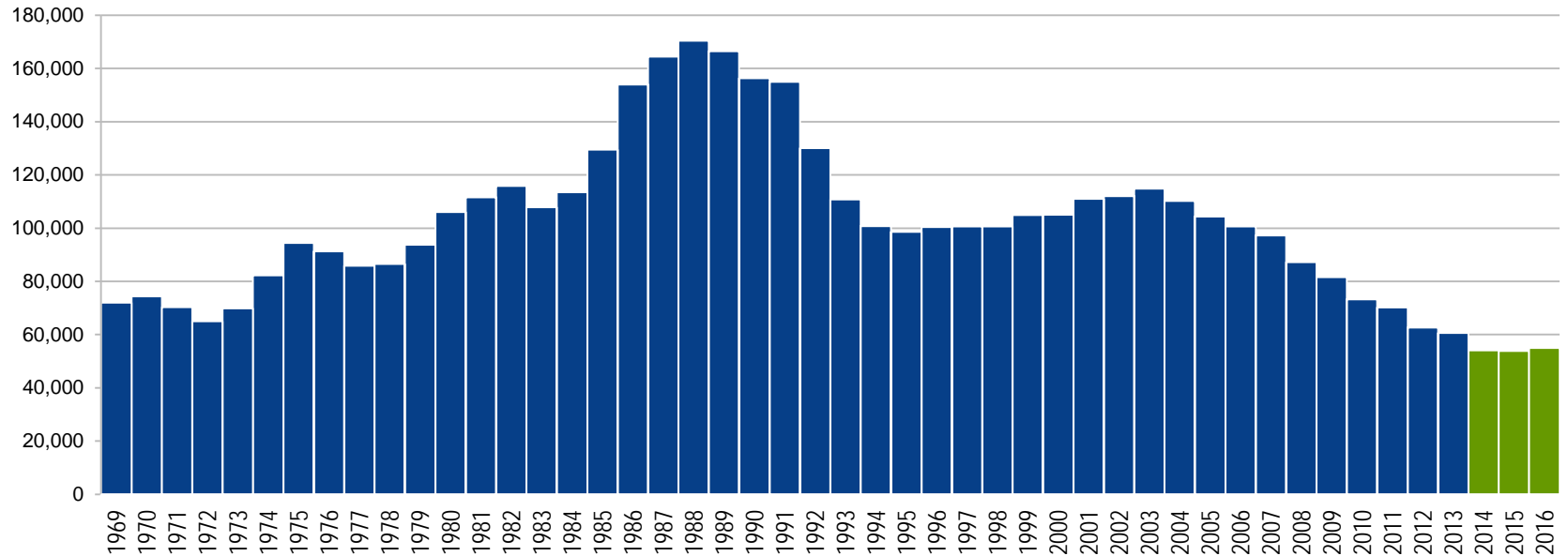
Presentation Overview

- Background/History
- Purpose
- Issues/Operational Concerns
- Next Steps



Background/History

2016: 3rd Best Overall Crime Since 1969



Source: DPD 2016 Preliminary Uniform Crime Reporting (UCR) Part 1 crime - All other crime data is derived from FBI UCR

Background/History

Response Times & Calls for Service

Year	Priority 1 Response Time	Priority 2 Response Time	Priority 3 Response Time	Priority 4 Response Time	Total Dispatched 911 Calls
2015	8.09	19.59	65.18	89.27	606,541
2016	7.94	18.26	49.15	63.34	628,835
Change	-0.15	-1.33	.16.03	-25.93	+22,294

- 22,294 more dispatched calls for service
- Overall reduction in response time

Purpose

- Provide the 2017
 - Year to Date Crime Report
 - Month to Date Crime Report
 - Response Time and Calls for Service
- Discuss the police department's ongoing efforts to address crime

Year to Date Crime Report

January 1 – August 31, 2017

City Total				
Offense	YTD	YTD Last Year	Count DIFF	% Change
Murder	103	117	-14	-11.97%
Sexual Assault	398	475	-77	-16.21%
Agg Assault NFV	2,215	1,875	340	18.13%
Agg Assault FV	1,146	1,084	62	5.72%
Robbery Business	588	510	78	15.29%
Robbery Individual	2,298	2,492	-194	-7.78%
Sub-Total	6,748	6,553	195	2.98%
Burglary Business	2,591	2,173	418	19.24%
Burglary Residence	4,005	4,946	-941	-19.03%
Shoplift	1,250	1,561	-311	-19.92%
BMV/ Auto Acc	9,941	10,449	-508	-4.86%
Other Theft	5,037	5,360	-323	-6.03%
UUMV	5,102	4,896	206	4.21%
Sub-Total	27,926	29,385	-1,459	-4.97%
Total	34,674	35,938	-1,264	-3.52%

Source: DPD CompStat Daily Crime Briefing

Month to Date Crime Report

August 1 – August 31, 2017

City Total				
Offense	MTD	MTD Last Year	Count DIFF	% Change
Murder	10	15	-5	-33.33%
Sexual Assault	45	61	-16	-26.23%
Agg Assault NFV	287	231	56	24.24%
Agg Assault FV	145	126	19	15.08%
Robbery Business	94	65	29	44.62%
Robbery Individual	313	378	-65	-17.20%
Sub-Total	894	876	18	2.05%
Burglary Business	353	281	72	25.62%
Burglary Residence	494	610	-116	-19.02%
Shoplift	130	162	-32	-19.75%
BMV/ Auto Acc	1,331	1,402	-71	-5.06%
Other Theft	640	718	-78	-10.86%
UUMV	651	635	16	2.52%
Sub-Total	3,599	3,808	-209	-5.49%
Total	4,493	4,684	-191	-4.08%

Source: DPD CompStat Daily Crime Briefing

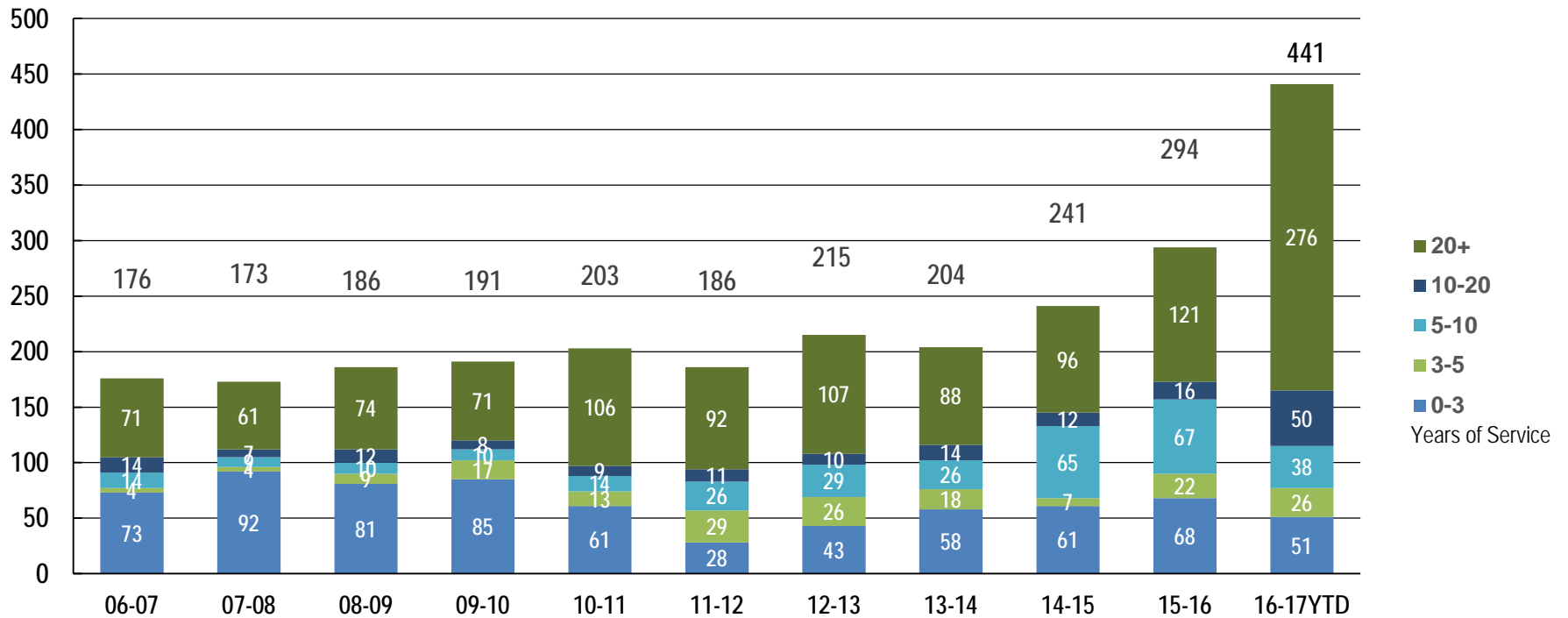
Response Times & Calls for Service

August 31, 2017

Year	Priority 1 Response Time	Priority 2 Response Time	Priority 3 Response Time	Priority 4 Response Time	Total Dispatched 911 Calls	Sworn Strength Actual
2017 as of 8/31/17	8.28	20.80	57.92	74.54	405,351	3051
2016 as of 8/31/16	7.59	17.12	45.95	60.19	422,914	3362

Background/History

Attrition by Fiscal Year

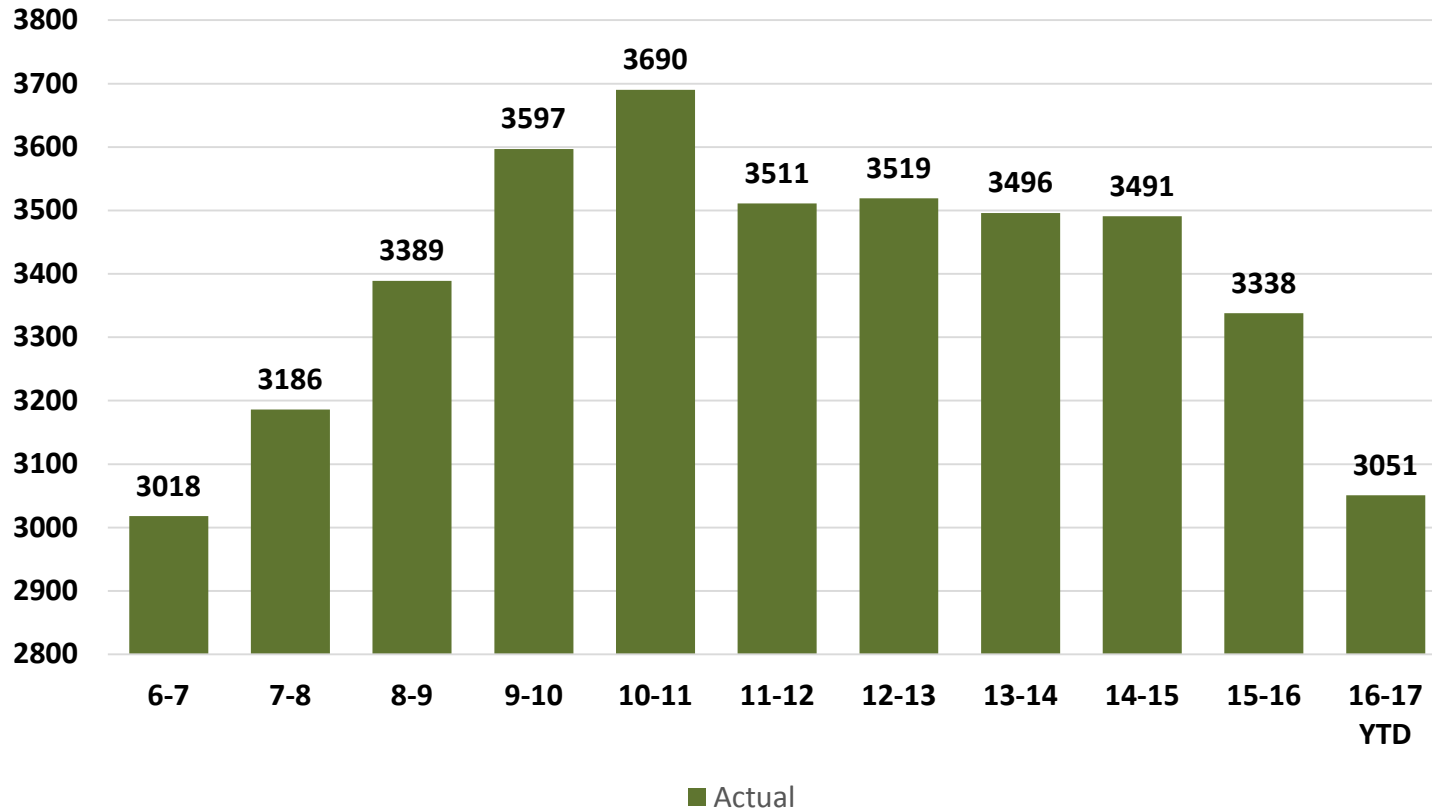


Sworn hired during FY16/17 YTD **154**

Source: DPD Personnel Division End of Month Report as of 8/31/17

Background/History

Sworn Strength by Fiscal Year



Issues/Operational Concerns

- Reduce overall crime
- Maintain response time goal for Priority 1 calls
- Increase hiring efforts

Next Steps

Prevent



Foot Patrols
Enhance community engagement
Private Sector Partnerships
Increased visibility

Respond



Analyze critical needs to identify
efficiencies to ensure core
services are met

Reduce



Fugitive Apprehension
Gang and Narcotics Enforcement
Collaboration

Monthly Crime Report

Public Safety and Criminal Justice Committee

September 11, 2017

U. Renee Hall, Chief of Police
Dallas Police Department
City of Dallas



Appendix

911 Call Center Response Time

August 31, 2017

City of Dallas goal is 90% of all calls answered within 10 seconds.

Month	Calls Received	Average Time to Answer	Service Level
8/1/17 – 8/31/17	166,580	2 Seconds	95.46%
7/1/17 – 7/31/17	174,256	2 Seconds	94.90%
6/1/17 - 6/30/17	173,302	2 Seconds	93.89%
5/1/17 - 5/31/17	179,355	3 Seconds	91.70%
4/1/17 – 4/30/17	176,715	7 Seconds	87.07%
3/1/17 – 3/31/17	180,791	56 Seconds	71.90%
2/1/17 – 2/28/17	161,869	43 Seconds	64.02%
1/1/17 – 1/31/17	169,905	9 Seconds	79.36%

Public Safety and Criminal Justice Committee

Action Matrix Response

Crime Reports and Maps

Maps

- Beats, Targeted Area Action Grid (TAAG) areas, and reporting areas were not constructed to match the same geographical boundaries as council districts. Many of the beats, TAAGs, and reporting areas span multiple districts

Statistical Information

- Include a breakdown of the top TAAG areas for the requested Council Districts
- 40% of the crime this year in Dallas has occurred in a TAAG area
- The TAAG areas provide more detailed information where the Department should focus its crime reduction efforts in order to impact overall crime in the City of Dallas

16

City of Dallas Council District #2 with TAAG Areas



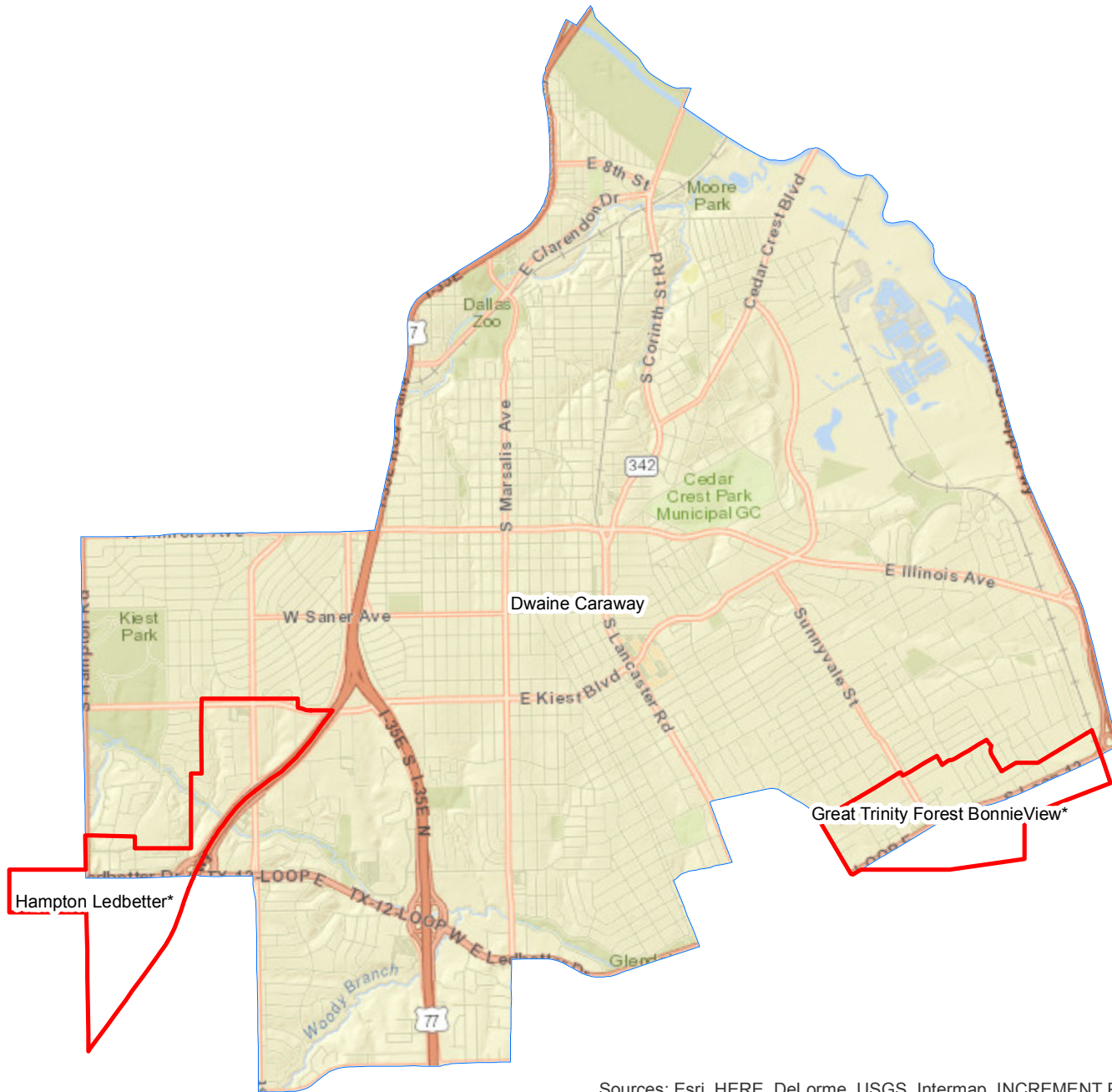
Sources: Esri, HERE, DeLorme, USGS, Intermap, INCREMENT P, NRCAN, Esri Japan, METI, Esri China (Hong Kong), Esri Korea, Esri (Thailand), MapmyIndia, NGCC, © OpenStreetMap contributors, and the GIS User Community

Council District 2 TAAG Areas

January 1 - August 27, 2017

UCR Offense	WebbChapel Timberline*		Ross Bennett*		Wycliff Lemmon*		Monument Good Latimer*	
	YTD	% Chg	YTD	% Chg	YTD	% Chg	YTD	% Chg
MURDER	1	NC	2	0.00%	0	-100.00%	0	NC
RAPE	5	-28.57%	6	-40.00%	2	-50.00%	6	>100%
AGG ASSAULT - NFV	46	76.92%	28	21.74%	15	-11.76%	18	63.64%
AGG ASSAULT - FV	18	-10.00%	22	4.76%	11	83.33%	1	-83.33%
ROBBERY- BUSINESS	15	15.38%	18	-21.74%	7	-12.50%	2	100.00%
ROBBERY- INDIVIDUAL	120	16.50%	38	-19.15%	17	-10.53%	26	73.33%
Sub-Total	205	21.30%	114	-9.52%	52	-5.45%	53	51.43%
BURGLARY- BUSINESS	52	73.33%	45	-4.26%	33	-19.51%	25	92.31%
BURGLARY- RESIDENCE	111	-4.31%	93	-3.13%	59	15.69%	24	14.29%
THEFT/SHOPLIFT	33	-17.50%	67	13.56%	10	-37.50%	0	-100.00%
THEFT/BMV	283	29.22%	298	-14.86%	202	29.49%	153	45.71%
OTHER THEFTS	60	-23.08%	176	10.69%	81	-10.99%	72	9.09%
UUMV	151	-11.70%	97	0.00%	62	29.17%	71	54.35%
Sub-Total	690	5.50%	776	-3.96%	447	10.92%	345	34.77%
Grand Total	895	8.75%	890	-4.71%	499	8.95%	398	36.77%

City of Dallas Council District #4 with TAAG Areas



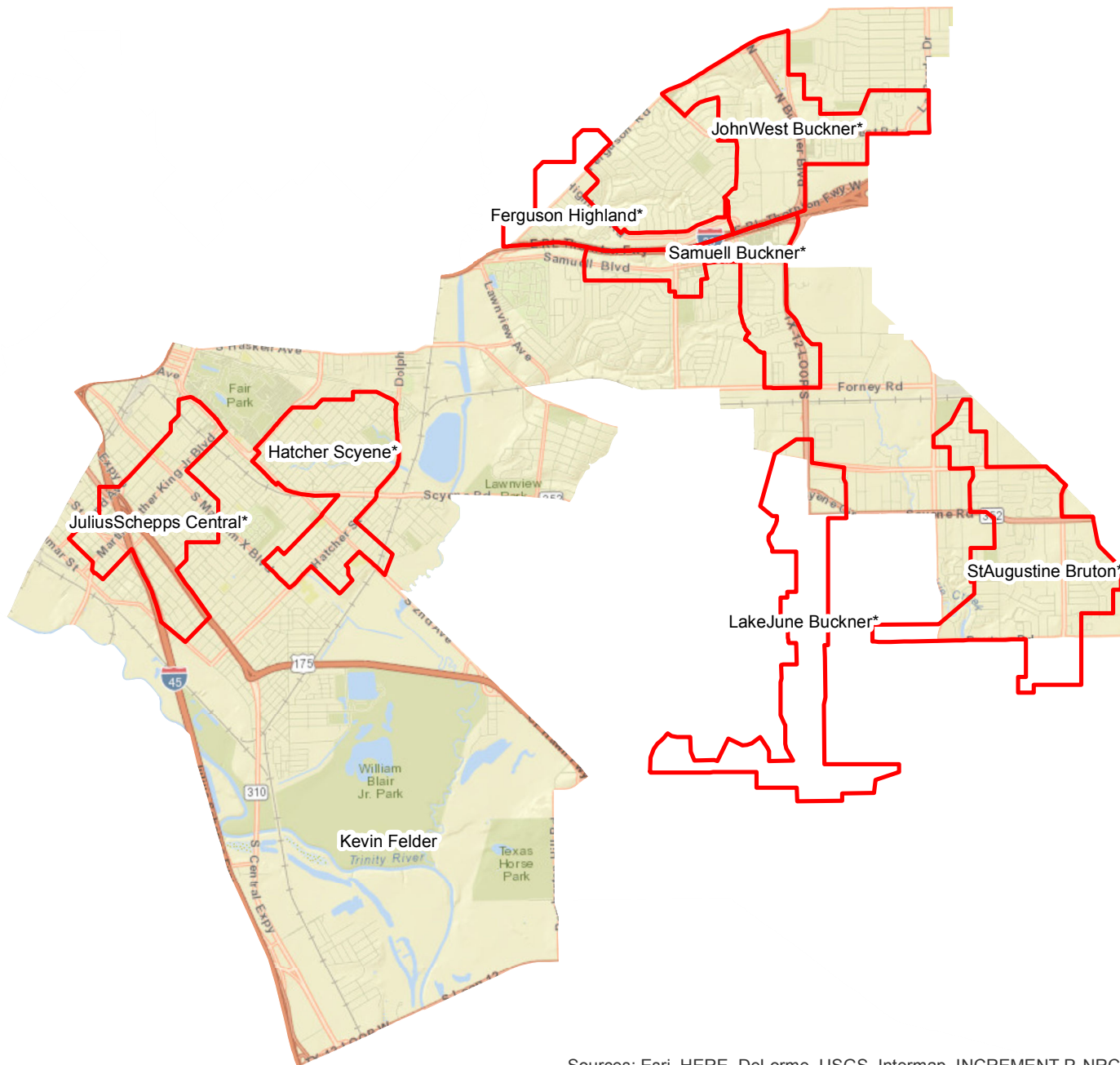
Sources: Esri, HERE, DeLorme, USGS, Intermap, INCREMENT P, NRCan, Esri Japan, METI, Esri China (Hong Kong), Esri Korea, Esri (Thailand), MapmyIndia, NGCC, © OpenStreetMap contributors, and the GIS User Community

Council District 4 TAAG Areas

January 1 - August 27, 2017

	Hampton Ledbetter*		Great Trinity Forest BonnieView*	
	YTD	% Chg	YTD	% Chg
UCR Offense				
MURDER	4	>100%	2	-33.33%
RAPE	2	-60.00%	8	100.00%
AGG ASSAULT - NFV	21	-27.59%	57	54.05%
AGG ASSAULT - FV	14	-30.00%	22	-18.52%
ROBBERY-BUSINESS	5	0.00%	4	-50.00%
ROBBERY-INDIVIDUAL	41	-31.67%	28	-12.50%
Sub-Total	87	-27.50%	121	9.01%
BURGLARY-BUSINESS	13	-18.75%	20	25.00%
BURGLARY-RESIDENCE	31	-24.39%	34	-46.03%
THEFT/SHOPLIFT	2	-60.00%	6	-45.45%
THEFT/BMV	63	-14.86%	38	-15.56%
OTHER THEFTS	34	-32.00%	29	-42.00%
UUMV	51	-12.07%	27	-15.63%
Sub-Total	194	-20.49%	154	-29.03%
Grand Total	281	-22.80%	275	-16.16%

City of Dallas Council District #7 with TAAG Areas



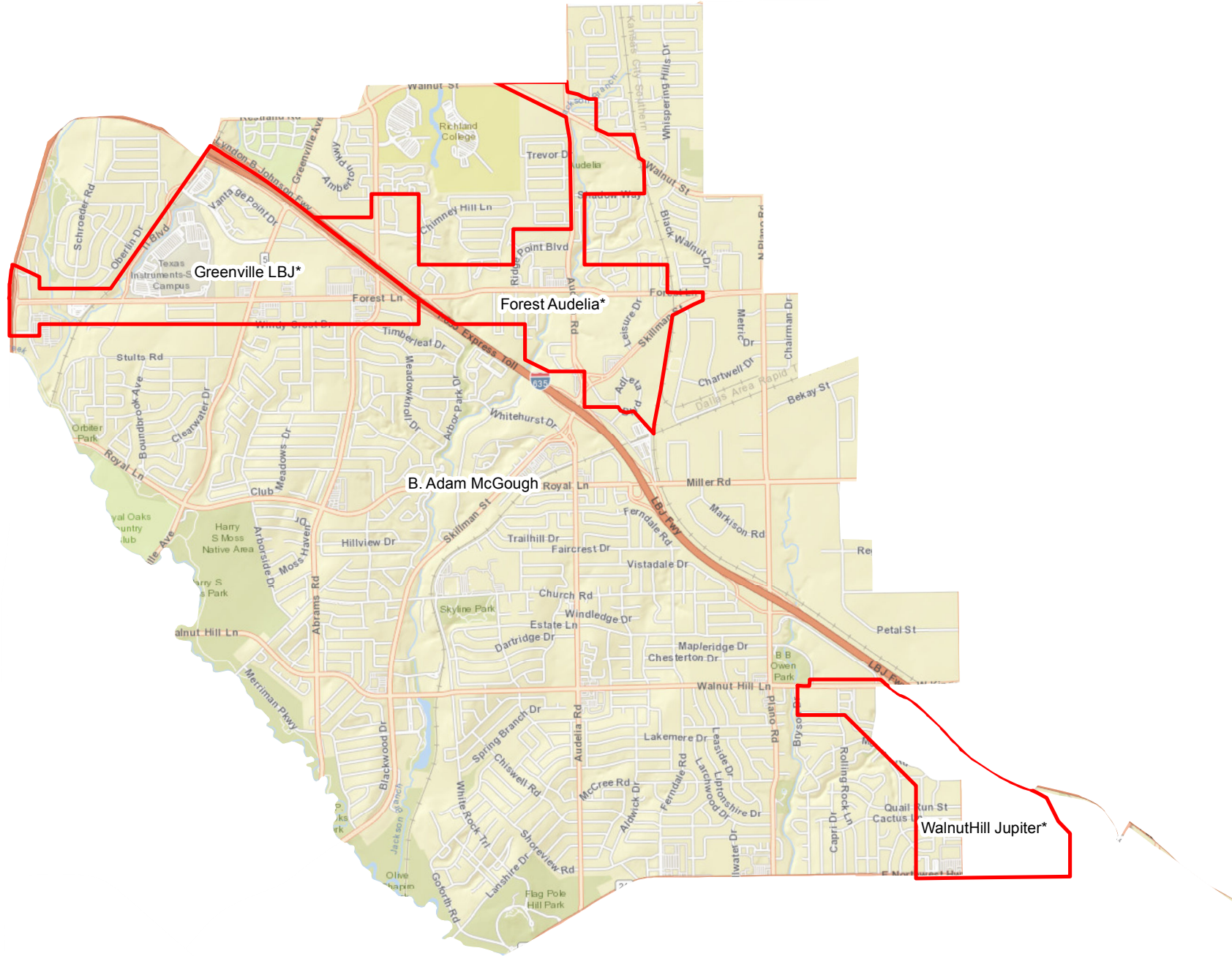
Sources: Esri, HERE, DeLorme, USGS, Intermap, INCREMENT P, NRCan, Esri Japan, METI, Esri China (Hong Kong), Esri Korea, Esri (Thailand), MapmyIndia, NGCC, © OpenStreetMap contributors, and the GIS User Community

Council District 7 Top 5 TAAG Areas

January 1 - August 27, 2017

	StAugustine Bruton*		LakeJune Buckner*		JohnWest Buckner*		JuliusSchepps Central*		Samuell Buckner*	
	YTD	% Chg	YTD	% Chg	YTD	% Chg	YTD	% Chg	YTD	% Chg
UCR Offense										
MURDER	3	-40.00%	1	0.00%	1	-66.67%	6	>100%	0	-100.00%
RAPE	3	-72.73%	5	-16.67%	1	-92.86%	13	44.44%	10	>100%
AGG ASSAULT - NFV	54	-11.48%	30	36.36%	35	-30.00%	88	46.67%	19	-24.00%
AGG ASSAULT - FV	25	-21.88%	12	50.00%	29	52.63%	36	80.00%	16	60.00%
ROBBERY- BUSINESS	9	50.00%	29	26.09%	8	60.00%	6	-45.45%	9	-47.06%
ROBBERY- INDIVIDUAL	34	-24.44%	36	-2.70%	52	-36.59%	36	-32.08%	25	-7.41%
Sub-Total	128	-20.00%	113	16.49%	126	-27.17%	185	19.35%	79	-5.95%
BURGLARY- BUSINESS	15	-16.67%	49	19.51%	20	25.00%	27	-18.18%	13	30.00%
BURGLARY- RESIDENCE	94	4.44%	17	-51.43%	77	-6.10%	35	12.90%	47	-21.67%
THEFT/SHOPLIFT	13	>100%	25	-21.88%	2	-71.43%	6	-45.45%	26	-27.78%
THEFT/BMV	125	16.82%	136	14.29%	109	0.93%	40	29.03%	77	-25.24%
OTHER THEFTS	52	-22.39%	56	-21.13%	40	-37.50%	64	-7.25%	35	-2.78%
UUMV	82	24.24%	68	-19.05%	86	34.38%	41	20.59%	68	15.25%
Sub-Total	381	7.93%	351	-8.12%	334	-2.05%	213	1.91%	266	-12.50%
Grand Total	509	-0.78%	464	-3.13%	460	-10.51%	398	9.34%	345	-11.08%

City of Dallas Council District #10 with TAAG Areas



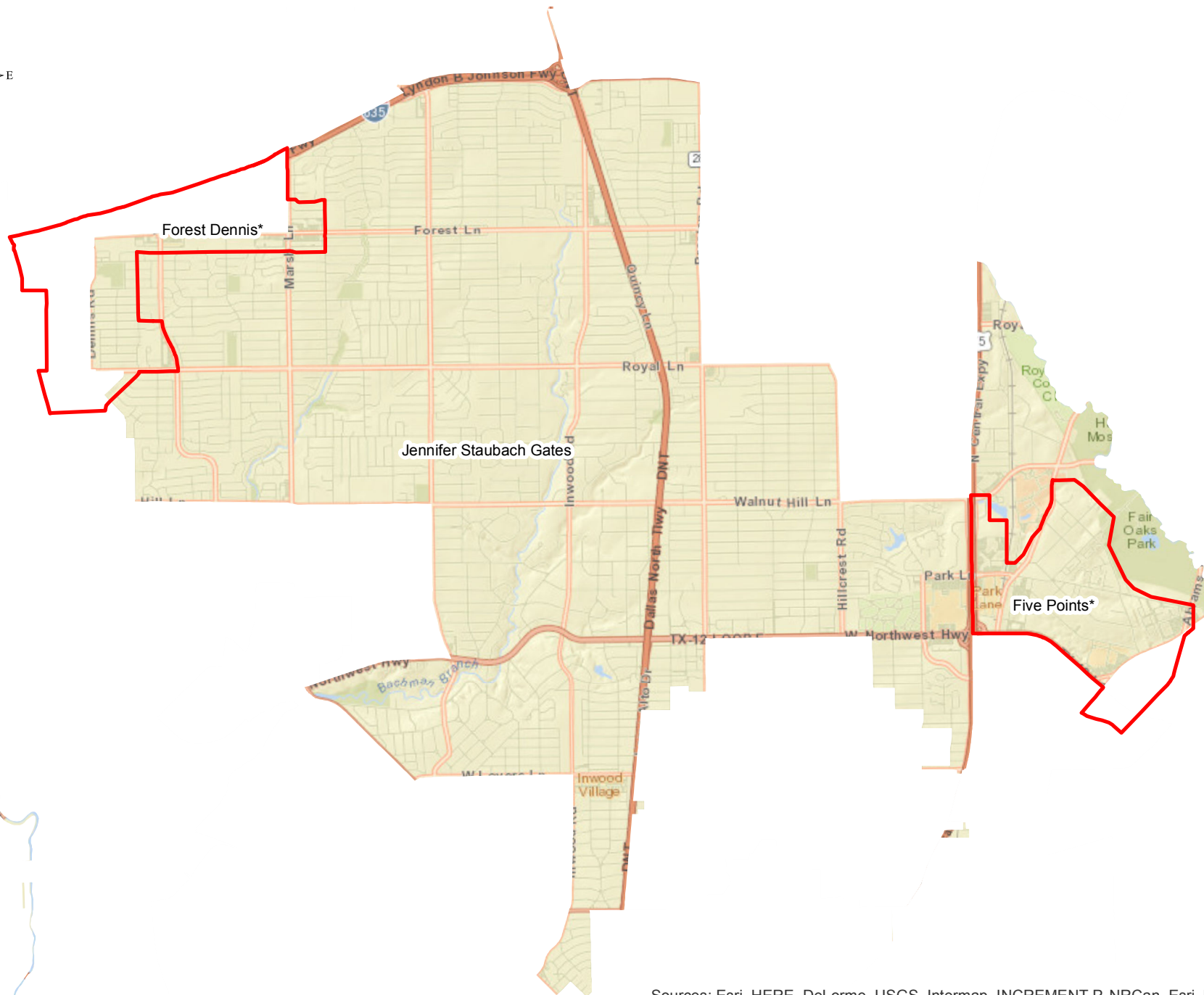
Sources: Esri, HERE, DeLorme, USGS, Intermap, INCREMENT P, NRCan, Esri Japan, METI, Esri China (Hong Kong), Esri Korea, Esri (Thailand), MapmyIndia, NGCC, © OpenStreetMap contributors, and the GIS User Community

Council District 10 TAAG Areas

January 1 - August 27, 2017

UCR Offense	Forest Audelia*		WalnutHill Jupiter*		Greenville LBJ*	
	YTD	% Chg	YTD	% Chg	YTD	% Chg
MURDER	1	-83.33%	2	100.00%	0	NC
RAPE	11	-38.89%	5	0.00%	4	0.00%
AGG ASSAULT - NFV	37	-9.76%	19	>100%	26	>100%
AGG ASSAULT - FV	30	0.00%	14	100.00%	13	>100%
ROBBERY- BUSINESS	13	18.18%	9	>100%	7	0.00%
ROBBERY- INDIVIDUAL	44	-57.28%	56	16.67%	18	20.00%
Sub-Total	136	-34.93%	105	43.84%	68	65.85%
BURGLARY- BUSINESS	44	62.96%	27	>100%	15	-59.46%
BURGLARY- RESIDENCE	90	-39.19%	47	-11.32%	28	-6.67%
THEFT/SHOPLIFT	3	50.00%	10	-69.70%	73	7.35%
THEFT/BMV	154	1.99%	91	-27.78%	91	-17.27%
OTHER THEFTS	66	-9.59%	29	-27.50%	52	15.56%
UUMV	83	-2.35%	64	-8.57%	42	10.53%
Sub-Total	440	-9.47%	268	-19.03%	301	-8.23%
Grand Total	576	-17.12%	373	-7.67%	369	0.00%

City of Dallas Council District #13 with TAAG Areas



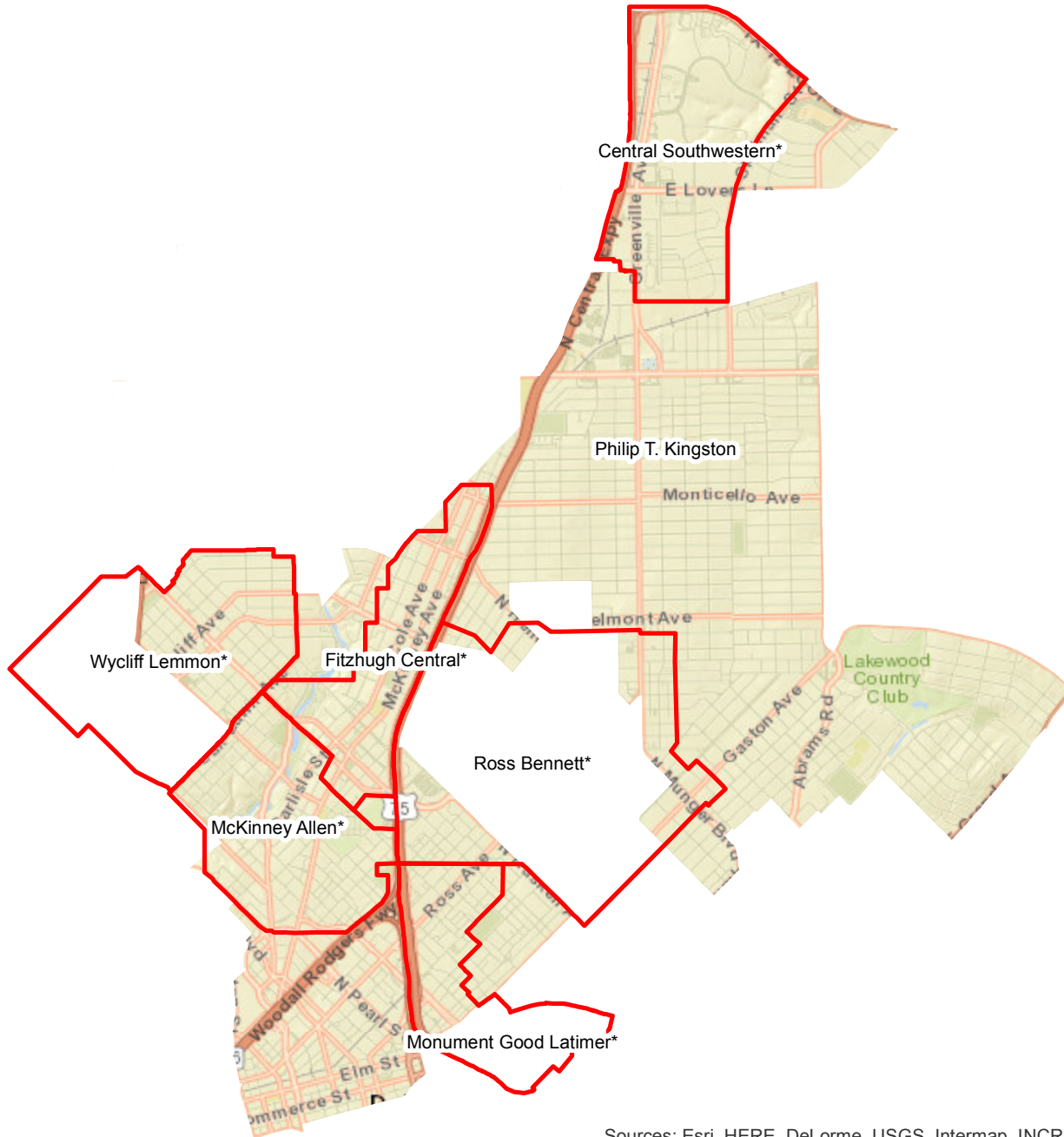
Sources: Esri, HERE, DeLorme, USGS, Intermap, INCREMENT P, NRCan, Esri Japan, METI, Esri China (Hong Kong), Esri Korea, Esri (Thailand), MapmyIndia, NGCC, © OpenStreetMap contributors, and the GIS User Community

Council District 13 TAAG Areas

January 1 - August 27, 2017

UCR Offense	Five Points*		Forest Dennis*	
	YTD	% Chg	YTD	% Chg
MURDER	4	100.00%	0	-100.00%
RAPE	12	20.00%	3	0.00%
AGG ASSAULT - NFV	33	10.00%	10	-16.67%
AGG ASSAULT - FV	36	80.00%	5	>100%
ROBBERY-BUSINESS	20	66.67%	13	>100%
ROBBERY-INDIVIDUAL	74	-33.93%	40	21.21%
Sub-Total	179	-3.76%	71	31.48%
BURGLARY-BUSINESS	23	-36.11%	59	31.11%
BURGLARY-RESIDENCE	157	-25.94%	28	-20.00%
THEFT/SHOPLIFT	91	-27.20%	21	-44.74%
THEFT/BMV	210	-7.08%	148	2.07%
OTHER THEFTS	111	4.72%	40	-11.11%
UUMV	101	2.02%	84	12.00%
Sub-Total	693	-13.81%	380	-0.78%
Grand Total	872	-11.92%	451	3.20%

City of Dallas Council District #14 with TAAG Areas



Sources: Esri, HERE, DeLorme, USGS, Intermap, INCREMENT P, NRCan, Esri Japan, METI, Esri China (Hong Kong), Esri Korea, Esri (Thailand), MapmyIndia, NGCC, © OpenStreetMap contributors, and the GIS User Community

Council District 14 Top 5 TAAG Areas

January 1 - August 27, 2017

	Ross Bennett*		Five Points*		Wycliff Lemmon*		McKinney Allen*		Monument Good Latimer*	
	YTD	% Chg	YTD	% Chg	YTD	% Chg	YTD	% Chg	YTD	% Chg
UCR Offense										
MURDER	2	0.00%	4	100.00%	0	-100.00%	0	NC	0	NC
RAPE	6	-40.00%	12	20.00%	2	-50.00%	6	50.00%	6	>100%
AGG ASSAULT - NFV	28	21.74%	33	10.00%	15	-11.76%	15	-6.25%	18	63.64%
AGG ASSAULT - FV	22	4.76%	36	80.00%	11	83.33%	2	-50.00%	1	-83.33%
ROBBERY-BUSINESS	18	-21.74%	20	66.67%	7	-12.50%	1	-66.67%	2	100.00%
ROBBERY-INDIVIDUAL	38	-19.15%	74	-33.93%	17	-10.53%	14	27.27%	26	73.33%
Sub-Total	114	-9.52%	179	-3.76%	52	-5.45%	38	0.00%	53	51.43%
BURGLARY-BUSINESS	45	-4.26%	23	-36.11%	33	-19.51%	37	-2.63%	25	92.31%
BURGLARY-RESIDENCE	93	-3.13%	157	-25.94%	59	15.69%	54	5.88%	24	14.29%
THEFT/SHOPLIFT	67	13.56%	91	-27.20%	10	-37.50%	5	-64.29%	0	-100.00%
THEFT/BMV	298	-14.86%	210	-7.08%	202	29.49%	198	-6.60%	153	45.71%
OTHER THEFTS	176	10.69%	111	4.72%	81	-10.99%	92	-25.20%	72	9.09%
UUMV	97	0.00%	101	2.02%	62	29.17%	64	-8.57%	71	54.35%
Sub-Total	776	-3.96%	693	-13.81%	447	10.92%	450	-11.42%	345	34.77%
Grand Total	890	-4.71%	872	-11.92%	499	8.95%	488	-10.62%	398	36.77%