

# Memorandum



DATE: December 4, 2015

TO: Honorable Members of the Public Safety Committee:  
Adam Medrano (Chair), B. Adam McGough (Vice Chair), Jennifer S. Gates, Sandy Greyson,  
Philip T. Kingston, Tiffinni A. Young

SUBJECT: **Dallas Police Department Crime Report**

On Tuesday, December 8, 2015, you will be briefed on the Dallas Police Department Crime Report. The materials are attached for your review.



Eric D. Campbell  
Assistant City Manager

Attachment

cc: Honorable Mayor and Members of the City Council  
A.C. Gonzalez, City Manager  
Warren M.S. Ernst, City Attorney  
Craig D. Kinton, City Auditor  
Rosa A. Rios, City Secretary  
Daniel F. Solis, Administrative Judge  
Ryan S. Evans, First Assistant City Manager

Jill A. Jordan, P.E., Assistant City Manager  
Mark McDaniel, Assistant City Manager  
Joey Zapata, Assistant City Manager  
Jeanne Chipperfield, Chief Financial Officer  
Sana Syed, Public Information Officer  
Elsa Cantu, Assistant to the City Manager – Mayor & Council



# Dallas Police Department Crime Report

Public Safety Committee  
December 8, 2015



[www.dallaspolice.net](http://www.dallaspolice.net)

David O. Brown  
Chief Of Police



# Index Crime Report

January 1 – November 30, 2015

CRIME TYPE	2015 YTD	2014 YTD	% CHG YTD	5 yr % Change	11 yr % Change	Crime Rate EOY 2014	Previous Low Year
<b>Murder</b>	121	104	16.35%	-29.24%	-48.44%	0.09	1930
<b>Sexual Assault</b>	652	546	19.41%	*	*	0.62	*
<b>Robbery</b>	3,739	3,409	9.68%	-30.73%	-51.97%	3.04	1968
Business	694	579	19.86%	-41.30%	-51.24%	n.c.	n.c.
Individual	3,045	2,830	7.60%	-27.88%	-52.13%	n.c.	n.c.
<b>Aggravated Assault</b>	3,567	3,496	2.03%	-6.93%	-53.05%	2.92	1967
Non-Fam Viol	2,303	2,292	0.48%	-13.04%	-60.39%	n.c.	n.c.
Fam Viol	1,264	1,204	4.98%	7.39%	-27.65%	n.c.	n.c.
<b>Total Violent Crime</b>	8,079	7,555	6.94%	-16.69%	-49.36%	6.67	1968
<b>Burglary</b>	9,908	10,486	-5.51%	-40.05%	-46.73%	9.21	1964
Business	2,908	3,107	-6.40%	-25.84%	-48.44%	n.c.	n.c.
Residence	7,000	7,379	-5.14%	-44.59%	-45.95%	n.c.	n.c.
<b>Theft</b>	23,406	23,856	-1.89%	-35.94%	-54.65%	21.24	1963
Auto Theft	6,661	6,503	2.43%	-30.10%	-58.20%	5.55	1967
<b>Total Non-Violent</b>	39,975	40,845	-2.13%	-36.21%	-53.51%	36.00	1964
<b>Total Index Crimes</b>	48,054	48,400	-0.71%	-33.76%	-52.90%	42.67	1964



# Homicide Trends in Dallas

Lowest Homicide Rates on Record	
Year	Homicide Rate
1930	.077
<b>2014</b>	<b>.091</b>
1957	.104
<b>2011</b>	<b>.109</b>
<b>2013</b>	<b>.114</b>
1931	.114
1952	.117
1958	.121
1951	.123
1955	.123

Number of Homicides 2004 - 2014	
Year	# of Homicides
2004	248
2005	202
2006	187
2007	200
2008	170
2009	166
2010	148
2011	133
2012	154
2013	143
<b>2014</b>	<b>116</b>



# Major Cities Crime Statistics

## 2014 Total Crime Uniform Crime Report

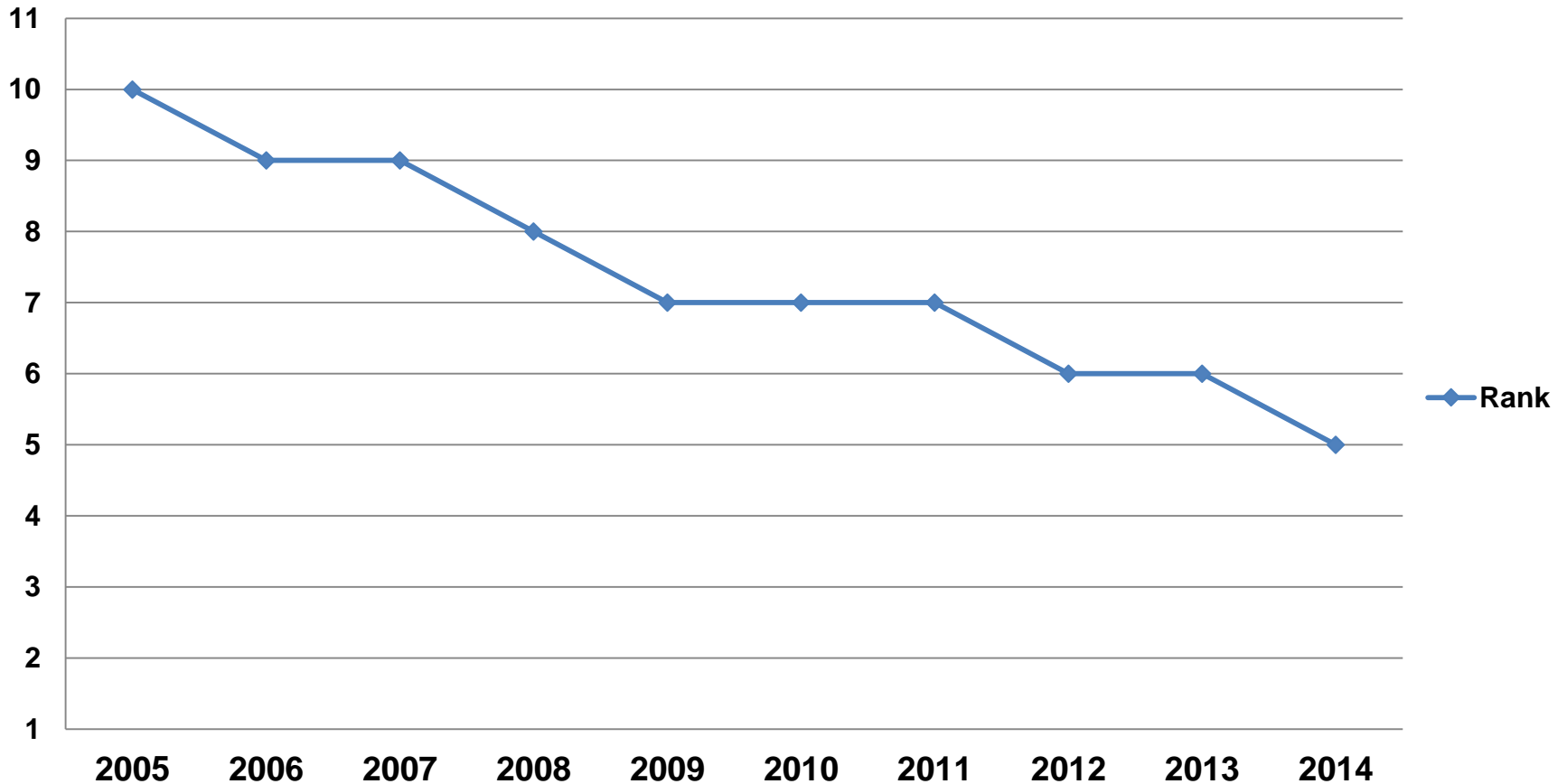
Rank	City	Overall Crime Per 1,000 Population
1	New York	21.99
2	San Diego	23.40
3	Los Angeles	26.19
4	Chicago	40.10
<b>5</b>	<b>Dallas</b>	<b>42.54</b>
6	Phoenix	42.96
7	Philadelphia	44.09
8	Houston	56.85
9	San Antonio	59.57
10	Detroit	68.06

**Source: 2003-2014 Uniform Crime Reports** Comparison of total part 1 offenses for each year. Chicago was missing crime data from the 2013 report. Assuming that year was a crime reduction, this number would be 6. According to the FBI, caution is advised comparing statistical data specific to each jurisdiction.



# Major Cities UCR Ranking

## Dallas UCR Ranking



Source: FBI Uniform Crime Report



# Major Cities Crime Statistics

Dallas has the most significant decline in crime among major Texas cities and cities across the nation.

Nationwide			
Rank	City	Total Crime % Change	Years Consecutive Reduction
1	DALLAS	-52.84%	11
2	LOS ANGELES	-44.58%	11
3	DETROIT	-44.22%	7
4	SAN DIEGO	-40.41%	6
5	CHICAGO	-40.07%	4*
6	PHOENIX	-38.89%	5
7	NEW YORK	-21.13%	7
8	PHILADELPHIA	-17.25%	2
9	HOUSTON	-12.35%	2
10	SAN ANTONIO	- 5.71%	3

Texas		
Rank	City	Total Crime % Change
1	DALLAS	-52.84%
2	PLANO	-41.50%
3	EL PASO	-31.81%
4	ARLINGTON	-29.69%
5	LAREDO	-28.39%
6	CORPUS CHRISTI	-28.18%
7	HOUSTON	-12.35%
8	FT WORTH	-12.17%
9	AUSTIN	- 9.68%
10	SAN ANTONIO	- 5.71%

Source: 2014 Uniform Crime Report  
 According to the FBI, caution is advised comparing statistical data specific to each jurisdiction  
 Fort Worth data - fortworthpd.com



# Response Time Sworn Strength and Overtime

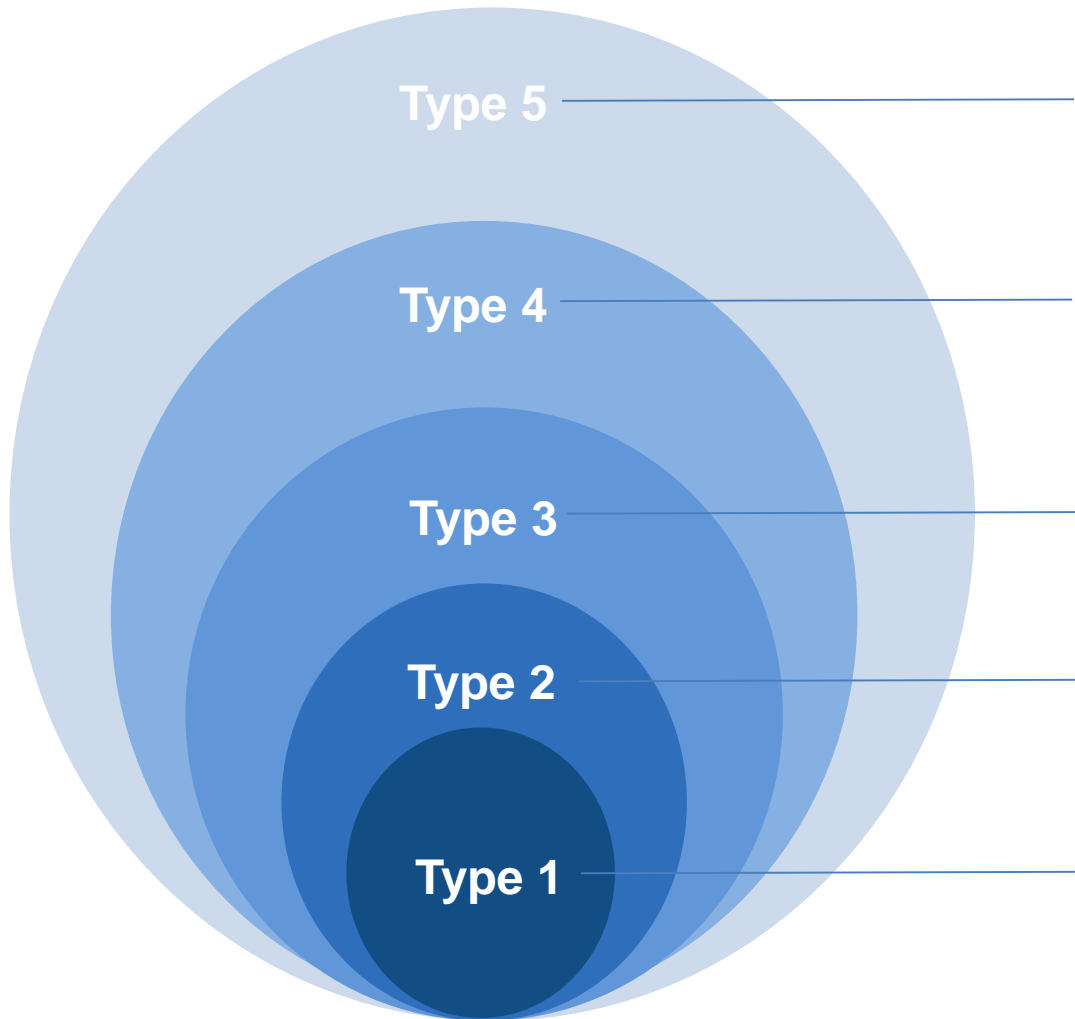
Year	Priority 1 Response Time (Goal 8 Mins)	Priority 2 Response Time (Goal 12 Mins)	Total Overall Offenses	Total Violent Offenses	Total Non-Violent Offenses	Sworn Strength	Call Answering Overtime Expenditures
2004	8.40	19.11	110,231	16,165	94,066	-	\$ 524,235
2005	8.30	18.57	104,384	15,429	88,955	3,116	\$ 959,974
2006	8.32	18.53	100,650	15,058	85,592	3,166	\$ 2,611,764
2007	8.50	17.57	97,210	13,248	83,962	3,266	\$ 4,369,212
2008	7.25	13.91	87,179	11,420	75,759	3,386	\$ 2,121,340
2009	7.07	12.10	81,585	10,221	71,364	3,589	\$ 1,075,730
2010	6.32	10.54	73,286	9,161	64,125	3,788	\$ 11,315
2011	6.32	11.45	70,189	8,330	61,859	3,601	\$ 6,060
2012	6.80	12.44	62,680	8,380	54,300	3,524	\$ 17,775
2013	7.34	14.32	60,604	8,330	52,274	3,524	\$ 469,993
2014	7.63	16.55	54,126	8,457	45,669	3,546	\$ 145,544
November 2015	8.12	19.78	48,054	8,079	39,979	3,511	\$ 1,543,738

Source: 2004 – 2014 Priority 1 & 2 Time - Response Time Report as of December 31<sup>st</sup> of each year  
 Sworn Strength - Hiring and Attrition Report Estimates as of October 31<sup>st</sup> of each fiscal year  
 2015 Priority 1 & 2 / Offense Data - COMPSTAT Daily Brief YTD





# Call Types and Priority



## Telephone Service Calls\*

Ex. Lost Property, Theft from Person or Service, Criminal Mischief, Want to Locate or Non-Critical Missing Person

## Non-Critical Calls

*Goal – 60 Minutes or Less*

Ex. Disturbance (Loud Music), Theft, Burglary (Unknown when occurred), Animal Complaints, Criminal Mischief, Panhandling

## General Services Calls

*Goal – 30 Minutes or Less*

Missing Person, Intoxicated Person, Drug House, Burglary (recent)

## Prompt Calls

*Goal – 12 Minutes or Less*

Ex. Robbery, Fire, Criminal Assault

## Emergency Calls

*Goal – 8 Minutes or Less*

Ex. Shooting, Cutting, Disturbance Active Shooter Foot, Kidnapping in Progress



# Call Types and Priority

The goal for dispatch of **Type I** emergency calls will be two (2) minutes with an anticipated six (6) minute travel time to provide police presence at the scene in a total of eight **(8) minutes or less**.

## Categories of Type I Calls

Family Violence AWARE Alarm	All Felonies in Progress
Major Accident on the Freeway	Person in Danger
Cutting	Critical Incident Team Response w/ Ambulance
Assist Officer	Disturbance Armed Encounter Vehicle
Assist Officer (Add Ambulance for Injured Officer)	Disturbance Armed Encounter Foot
Kidnapping in Progress	Disturbance Active Shooter Vehicle
Shooting	Disturbance Active Shooter Foot
Terrorist Incident	



# Call Types and Priority

**Priority II** calls have a goal dispatch time of five (5) minutes, an anticipated travel time of seven (7) minutes, to provide police presence in a total of twelve **(12) minutes or less.**

Categories of Type II Calls	
911 Hang-Up (residence/business)	Robbery
Disturbance at a School	Hold-Up Alarm
Disturbance (potential violence)	Criminal Assault
Major Accident	Suicide
Burglary (recent-suspect is near location)	Major Disturbance (mental illness)
Alarm (verified response)	Suspicious Person
Prowler	Fire



# Call Types and Priority

**Priority III** calls have a goal of dispatch within eight (8) minutes, an anticipated travel time of seven (7) minutes providing police presence in a total of fifteen **(15) minutes or less.**

Categories of Type III Calls	
Drug House	Open Air Drug Sales
Random Gun Fire	Minor Accident (upgrade if hazardous)
Drunk	Burglary (recent)
Burglar Alarm	Injured Person
Missing Person	Dead Person
Sick Person	Open Building
Prisoner	Prostitution Complaint
Abandoned Child	



# Call Types and Priority

**Priority IV** for police service that require police presence at the scene will be dispatched within **60 minutes** of receipt of call.

## Categories of Type IV Calls

Disturbance (Nuisance)	Theft
Disturbance (Loud Music)	Burglary (Unknown when occurred)
Animal Complaints	Parking Violation (Not Hazardous)
Abandoned Property	Criminal Mischief
Street Blockage	Meet Complainant
Racing/Speeding	Panhandling



# Call Types and Priority

\*Type V – (Expediter Calls) for service will be telephone service only.

## Categories of Type V Calls

Burglary - Coin Operated Machine, Storage Shed/Garage, Burglary of Residence (if complainant is not at location), Burglary of Business (if complainant is not at location)	Robbery (when complainant has left town)
Criminal Mischief	Harassment (telephone)
Lost Property	Wanted to Locate
Missing Person (not critical)	Thefts from Person or Service
Alarm (non-verified)	

# Questions?

# Appendix





# Attachment I

## Quality of Life Enforcement Activity

<b>Criminal Trespassing / Panhandling Activity</b> January – November 2015			
<b>Council District</b>	<b>Council Member</b>	<b>Criminal Trespassing Activity</b>	<b>Panhandling Citations</b>
1	Griggs	114	31
2	Medrano	562	279
3	Thomas	95	34
4	King Arnold	184	71
5	Callahan	54	37
6	Alonzo	184	466
7	Young	186	245
8	Wilson	189	217
9	Clayton	117	102
10	McGough	114	115
11	Kleinman	58	54
12	Greyson	30	33
13	Gates	84	142
14	Kingston	261	173



# Attachment II

## Quality of Life Enforcement Activity

### Crisis Intervention Homeless Initiative

An interdepartmental initiative between DPD, Crisis Intervention caseworkers & Streets Department personnel to remove homeless encampments and provide homeless individuals access to mental health treatment & shelter services.

Crisis Intervention Homeless Encampment Activity January – November 2015		
Council District	Total # of 311/CRMS Requests	Total # of Initiatives
1	15	3
2	75	200
3	3	4
4	10	11
5	7	0
6	26	28
7	55	99
8	30	14
9	12	1
10	14	13
11	6	10
12	2	0
13	8	1
14	59	8

# Attachment III

## 911 Call Response

### Times and Officers per 1,000

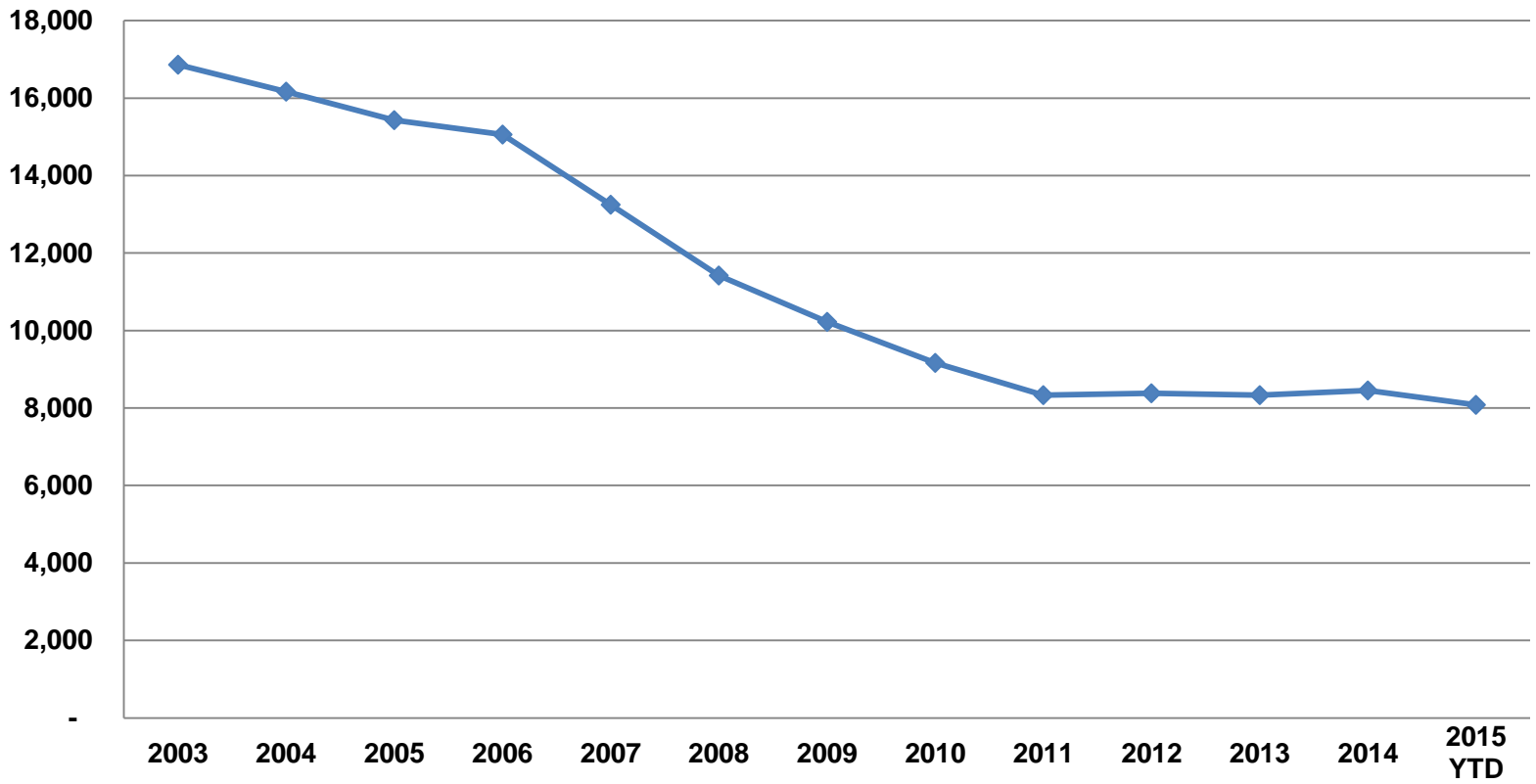
Year	Annual Budget	Overtime	Total # of Officers	Attrition	Population	Officers per 1,000	Emergency Response Time	Total # of 911 Calls	Total # of Civilians	Total UCR Offenses	% Change in Offense from Previous Year	UCR Ranking	Arrest	% of Officers In Patrol
2004	290,322,251	8,535,917	-	169	1,228,613	2.39	8.40	595,161	933	110,231	-3.95%	10	60,018	60.9%
2005	319,005,753	13,067,428	2,932	140	1,230,303	2.42	8.30	606,975	1,001	104,384	-5.30%	10	69,174	60.7%
2006	330,967,511	15,178,398	2,972	175	1,248,223	2.42	8.32	620,192	1,050	100,650	-3.58%	9	71,467	59.9%
2007	362,903,806	20,131,864	3,018	176	1,239,104	2.57	8.50	623,901	1,105	97,210	-3.42%	9	67,556	57.6%
2008	401,072,468	21,147,010	3,186	173	1,276,214	2.66	7.25	623,704	1,105	87,179	-10.32%	8	82,050	60.3%
2009	423,839,053	16,525,360	3,389	186	1,290,266	2.79	7.07	608,993	1,313	81,585	-6.42%	7	73,746	62.5%
2010	412,703,675	12,364,006	3,597	191	1,197,816	3.08	6.32	589,718	1,095	73,286	-10.17%	7	76,117	65.2%
2011	403,070,336	3,869,837	3,690	203	1,223,021	2.87	6.32	580,689	1,095	70,189	-4.23%	7	72,514	65.4%
2012	399,406,436	7,256,511	3,511	188	1,241,549	2.83	6.80	591,727	1,090	62,680	-10.70%	6	61,361	63.1%
2013	401,236,945	12,001,154	3,519	215	1,255,015	2.79	7.34	595,903	608*	60,604	-3.31%	6	58,438	62.0%
2014	426,401,375	12,301,371	3,496	210	1,268,570	2.76	7.63	596,670	623*	53,295	-10.69%	5*	46,520	60.0%

• Does not include 390 school crossing guards



# Attachment IV

## Total Violent Offenses

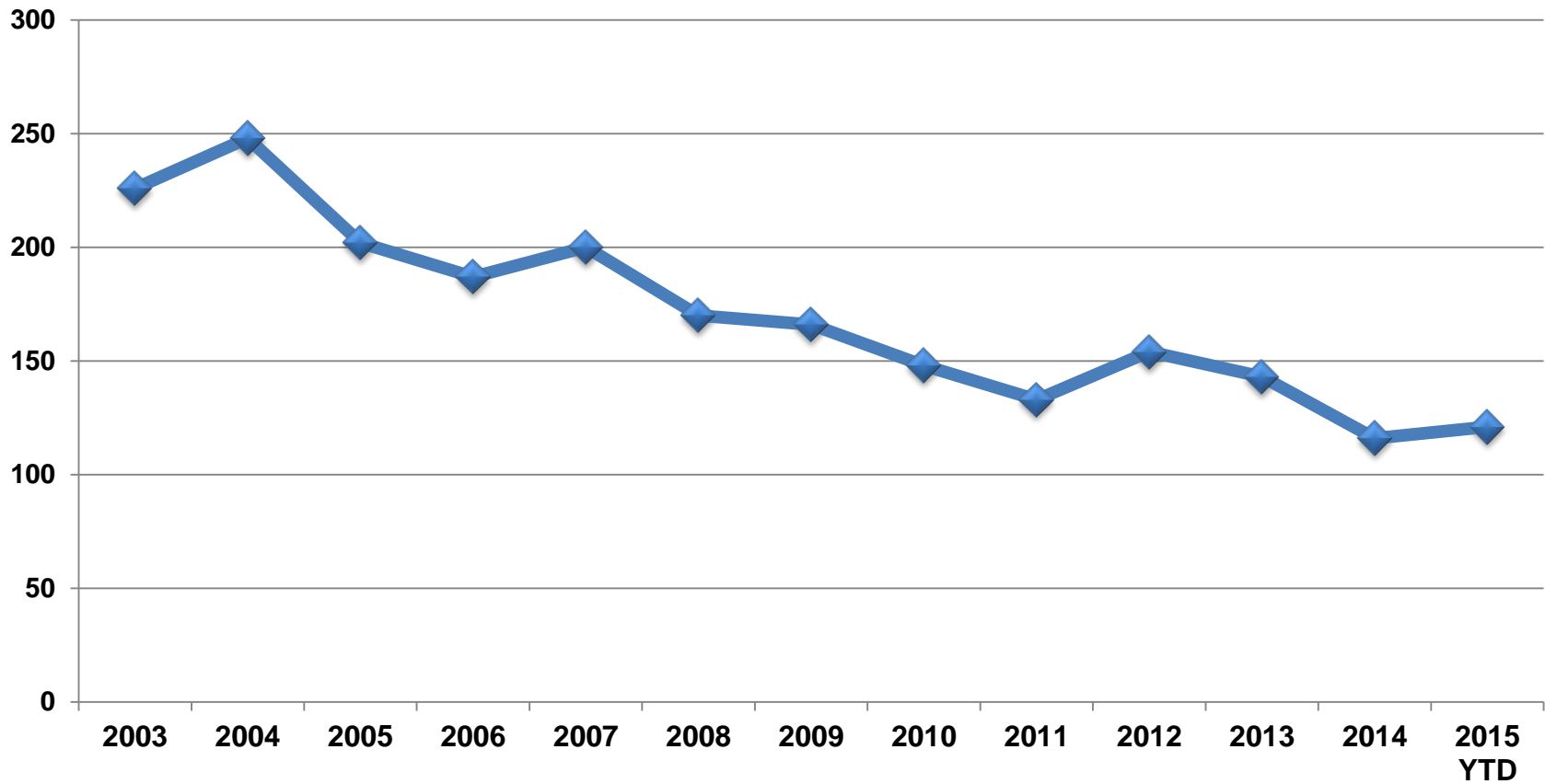


Total Violent Offenses 16,865 16,165 15,429 15,058 13,248 11,420 10,221 9,161 8,330 8,380 8,330 8,457 8,079



# Attachment V

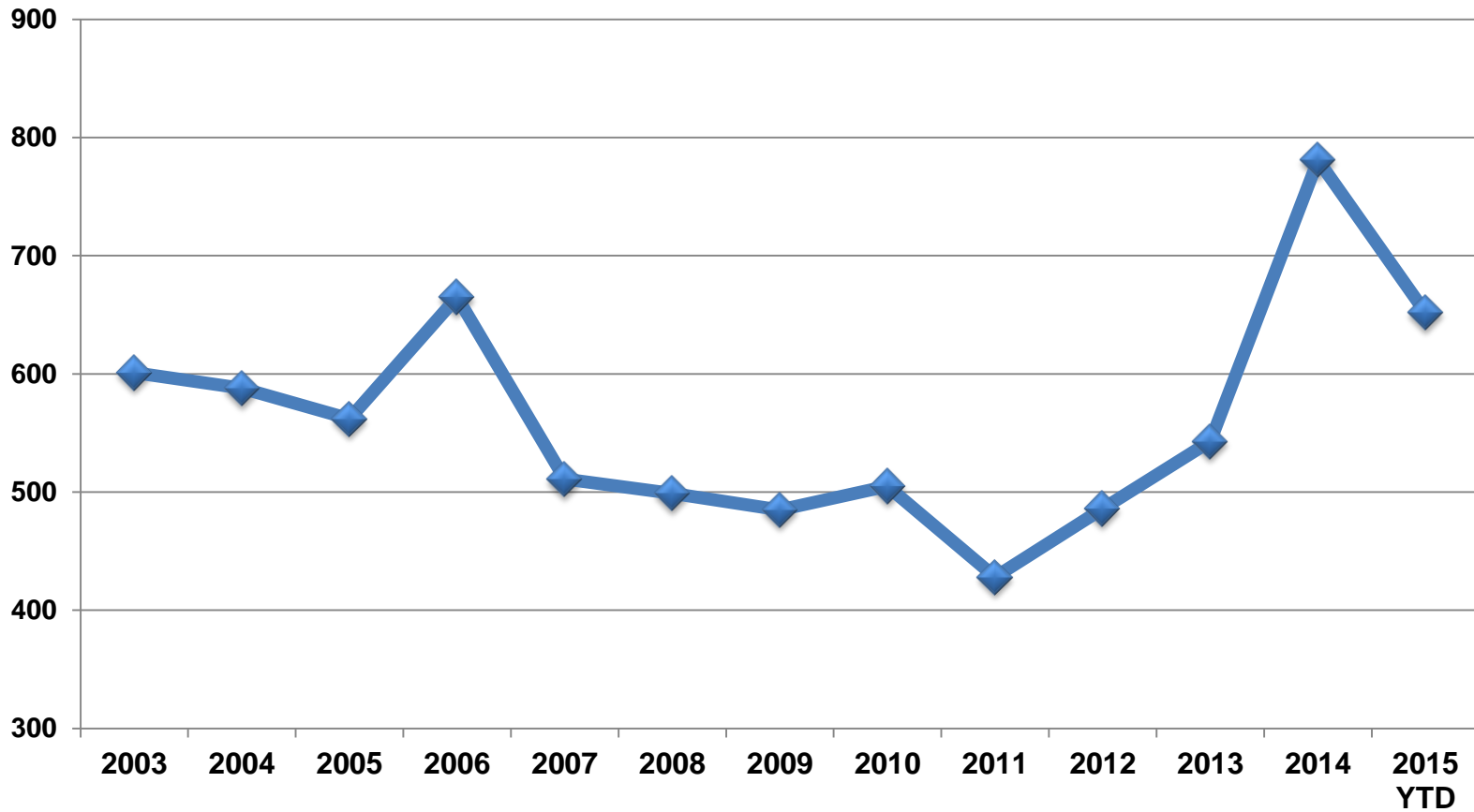
## Total Murder Offenses





# Attachment VII

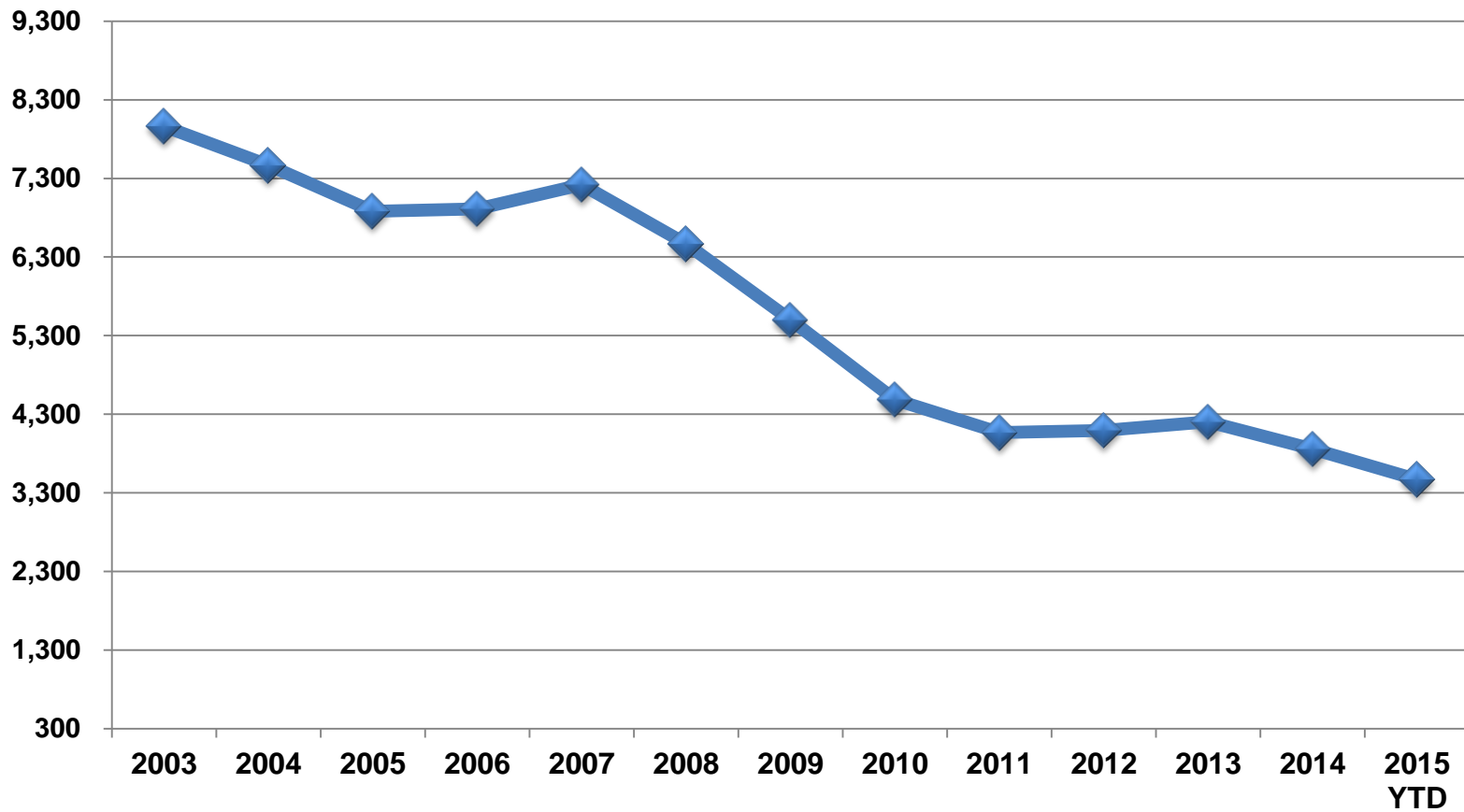
## Total Sexual Assault Offenses





# Attachment VI

## Total Aggravated Assault Offenses





# Attachment VIII

## Total Robbery Offenses

