

# Memorandum



DATE: October 21, 2016

TO: Honorable Members of the Public Safety Committee:  
Adam Medrano (Chair), B. Adam McGough (Vice Chair), Sandy Greyson, Tiffinni A. Young,  
Jennifer S. Gates, Philip T. Kingston

SUBJECT: **Recommended Projects for the 2017 Bond Program Police Facilities**

On Monday, October 24, 2016, you will be briefed on the Dallas Police Department's Recommended Projects for the 2017 Bond Program by Assistant Director Zaida Basora of the Equipment & Building Services Department, Deputy Chief Scott Walton and Assistant Director Donzell Gipson of the Dallas Police Department.

The briefing materials are attached for your review.

Please contact me if you have any questions or need additional information.



Eric D. Campbell  
Assistant City Manager

[Attachment]

cc: Honorable Mayor and Members of the City Council  
A.C. Gonzalez, City Manager  
Larry Casto, City Attorney  
Craig D. Kinton, City Auditor  
Rosa A. Rios, City Secretary  
Daniel F. Solis, Administrative Judge  
Ryan S. Evans, First Assistant City Manager

Jill A. Jordan, P.E., Assistant City Manager  
Mark McDaniel, Assistant City Manager  
Joey Zapata, Assistant City Manager  
M. Elizabeth Reich, Chief Financial Officer  
Sana Syed, Public Information Officer  
Elsa Cantu, Assistant to the City Manager – Mayor & Council

# Recommended Projects for the 2017 Bond Program

## POLICE FACILITIES

Public Safety Committee  
October 24, 2016



# Purpose

- ▶ Review DPD's recommended priorities for the 2017 Bond Program
- ▶ Discuss issues related to new and replacement facilities
- ▶ Present priority ranking list of facilities

# Previous Capital Bond Facilities

3

## ■ 1995 Bond Program

- Police HQ - Needs /Design = \$5 M

## ■ 1998 Bond Program

- Police HQ - Construction = \$42.2 M

## ■ 2003 Bond Program

- South Central, Police Academy Phase 1 land acquisition and design & other renovations = \$23.5 M

## ■ 2006 Bond Program

- Cadillac Heights Land Acquisition for Police Academy related facilities and City Service and Maintenance Facilities = \$23.7 M
- Major maintenance at all patrol stations: HVAC, emergency generators and roof replacements= \$3.9 M



# Strategic Objectives

- Improve security at Jack Evans Headquarters and patrol stations citywide
- Improve level of preparedness both in training & in facilities that enhance emergency response.
- Use the latest technology in facilities to promote efficiency and maintain evidence integrity.
- Locate facilities where they can provide a positive impact in areas that need economic development.

# Current Needs Inventory and Recommended Priorities

- **DPD Needs Inventory is over \$300 M**
- **Top Priority Needs = \$40 M**
  - **\$20 M** – Phase 2 Security Upgrades at Jack Evans Headquarters and 7 patrol stations
  - **\$10 M** – Reality-Based Training Village
  - **\$10 M** – Renovation/expansion of Southwest and Central Patrol stations

# Phase 2 Security Upgrades

6

- **\$20 M** – Phase 2 Security Upgrades at Jack Evans Headquarters and 7 patrol stations
  - Fencing, speed crash gates, lighting, digital video cameras, card access control, intercom system



Impasse II Security Fencing



HI Speed bi-fold gates



LED Light pole



Wall mounted LED fixture



Wall mounted LED fixture



# Reality-Based Training Village

7

- RBT is an extremely well planned method of putting officers in the most realistic situations with the most realistic equipment while using some basic psychological methods to ensure the training “sticks”
- **\$10 M** – Construction








# Southwest and Central Patrol

- **\$10 M** Renovation/expansion and additional parking



# Current Needs

		<b>New Construction</b>	
<b>Police Academy</b>		Design and Construction of new 87,000 s.f. police academy classroom building to replace current lease facility.	\$38 M
		Design and Construction of utilities, roads, infrastructure and environmental work associated with the Police Academy	\$18 M
		Design & Construction of a new enclosed baffled pistol range with three clear column bays 20pt. 50 yd. lanes (total 60pt.; 64,800 s.f.); enclosed baffled clear column bay 15pt., 100 yd rifle range lanes (29,700 s.f.);( 22,500 s.f.) support/class bldg.	\$50 M
		Design and Construction of a new enclosed baffled shotgun/moving target range with clear column bay 10 pt. 15 yd. (12,600 s.f.); and "Live Fire" enclosed concrete baffled building with sacrificial interior wood walls, with fire sprinkler suppression, supervisor cat-walk, and scene shop. (6,000 s.f. Live Fire and 6,000 s.f. support space.)	\$10.5 M
		Design and Construction of a Police Driving Training Facility including 1 mile track with skid pad, turn lanes, skill pad, 1400 ft. high speed course, simulated traffic turns and barriers including control tower.	\$18.7 M
		<b>New Construction Total</b>	<b>\$135.2M</b>

# Current Needs

10

Replacement /Renovation / Expansion		
<b>Patrol Stations - Security Enhancements</b>	Building and Site Security Enhancements at seven patrol stations per security assessment study	<b>\$15.3 M</b>
<b>Jack Evans Police HQ Security Enhancements</b>	Building and Site Security Enhancements per security assessment study	<b>\$3.9 M</b>
<b>Southwest Patrol Division</b>	Site acquisition, Design and Construction of replacement facility. Estimate 38,000 s.f. facility with 500 car parking spaces. With vehicle wash/fuel facility, unless close by. 10-acre site or multilevel garage.	<b>\$21.7 M</b>
<b>Central Patrol Division</b>	Site acquisition, Design and Construction of replacement Central Patrol facility located in Deep Ellum. Estimate 38,000 s.f. facility with 500 car parking spaces. With vehicle wash/fuel facility, unless close by.	<b>\$21.7 M</b>
<b>Strategic Deployment Tactical-Traffic Bldg.</b>	Site acquisition, Design and Construction of a 37,818 s.f. tactical bldg. include w/ 3,200 s.f. garage w/5 storage bays for command emergency vehicles and motorcycle storage.	<b>\$16.5 M</b>

# Strategic Deployment/Tactical & Traffic Building

11

- New Construction proposed.
- Previously requested in 1998, 2003 & 2006.
- Tactical & Traffic are currently housed at the Central Patrol Building.
- Special Emergency vehicles are stored in the open and lack adequate security; some stored off-site.
- Strategic Deployment operations include Explosive Ordinance Unit (bomb disposal), Canine Bomb Detection, Armored Vehicles, and Emergency Command Post vehicles.



Toronto (ETF) –  
Tactical Vehicle Garage

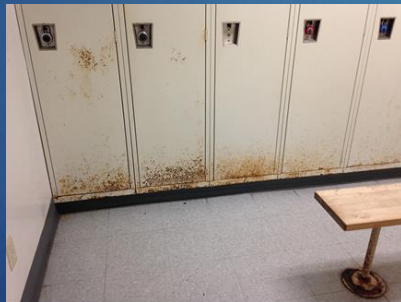
# Current Needs

	Replacement/ Renovation/Expansion Total	
<p><b>Police Property Room</b></p> 	<p>Site acquisition, Design and Construction of 60,000 s.f. property room for Police with refrigeration/freezer rooms, inventory management system to replace 50 year old building. High Density/High Bay Storage.</p>	<p><b>\$31 M</b></p>
<p><b>Firearms Training Center</b></p>	<p>Install perimeter baffle system at existing range, until permanent new facility can be built. Risk of noise and safety to surrounding home development.</p>	<p><b>\$5 M</b></p>
	<p><b>Replacement/ Renovation/Expansion Total</b></p>	<p><b>\$115.1</b></p>

# Major Maintenance

13

- Priority updates and retrofit to Police Facilities Identified by Equipment & Building Services Dept. facility condition assessment
- Other Examples:
  - Police Substation locker and restroom updates, and parking expansion for additional staffing.
  - Jack Evans Headquarters updates to 13 year old building such as carpet replacement, 3rd floor bridge structure enclosure and elevator replacement



# Questions