

Memorandum



CITY OF DALLAS

DATE March 15, 2018

Honorable Members of the Government Performance & Financial Management
Committee: Jennifer S. Gates (Chair), Scott Griggs (Vice Chair), Sandy Greyson,
TO Lee M. Kleinman, Philip T. Kingston, Tennell Atkins, Kevin Felder

SUBJECT **Dallas Central Appraisal District (DCAD) – FY 2018-19 Proposed Budget**

Each year, DCAD submits their annual budget to all 61 taxing entities they serve. Attached is their FY 2018-19 proposed budget. Representatives from DCAD will attend your Monday, March 19 meeting and be available to discuss their budget proposal.

Their FY 2018-19 proposed budget is \$27,495,334 which is a 7.63 percent increase from their current budget of \$25,546,023. Their budget includes 235 full-time positions (an increase of 7 positions) and a 3 percent merit increase for their employees.

The City of Dallas contribution to DCAD will increase from \$3,545,853 for the current year to \$3,801,918 for FY 2018-19. This is an increase of \$256,065 or 7.22 percent.

DCAD is seeking favorable support of their proposed budget for FY 2018-19. If 25 entities served by DCAD reject their budget, then DCAD would be required to adopt a new budget within 30 days of the disapproval.

A handwritten signature in blue ink that reads "M. Elizabeth Reich".

M. Elizabeth Reich
Chief Financial Officer

Attachment

c: Honorable Mayor and Members of the City Council	Jon Fortune, Assistant City Manager
T.C. Broadnax, City Manager	Joey Zapata, Assistant City Manager
Larry Casto, City Attorney	Jo M. (Jody) Puckett, Assistant City Manager (Interim)
Craig D. Kinton, City Auditor	Nadia Chandler Hardy, Chief of Community Services
Billerae Johnson, City Secretary (Interim)	Raquel Favela, Chief of Economic Development & Neighborhood Services
Daniel F. Solis, Administrative Judge	Theresa O'Donnell, Chief of Resilience
Kimberly Bizzor Tolbert, Chief of Staff to the City Manager	Directors and Assistant Directors
Majed A. Al-Ghafry, Assistant City Manager	

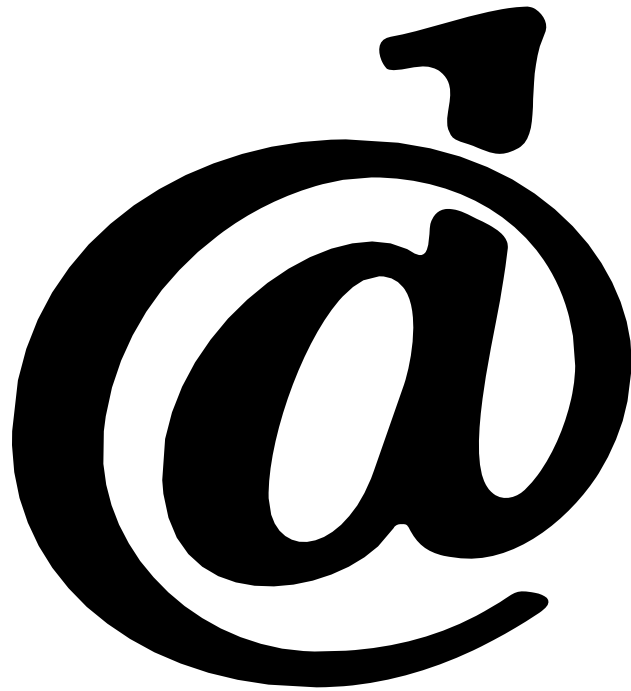


**DALLAS CENTRAL
APPRAISAL DISTRICT**

2018 - 2019

PROPOSED BUDGET

BUDGET OVERVIEW



2018 - 2019

PROPOSED BUDGET

@

Dallas Central Appraisal District

2018/2019 Proposed Budget

Budget Comparison

Executive Summary

	2017/2018	2018/2019
	<u>Approved</u>	<u>Proposed</u>
BUDGET EXPENDITURES:		
Salaries & Wages	\$14,178,856	\$14,932,929
Auto Expense	928,005	973,067
Supplies & Materials	726,457	821,124
Operational Services	41,040	39,330
Maintenance of Structure	340,321	357,211
Maintenance of Equipment	320,497	356,258
Contractual Services	673,345	792,773
Sundry Expenses	337,512	350,780
Insurance & Benefits	6,238,135	6,743,287
Professional Services	1,664,155	2,009,875
Capital Expenditures	97,700	118,700
Technology Development	0	0
Contingency	0	0
Total Expenditures	\$25,546,023	\$27,495,334
OPERATING FUND SOURCES:		
Entity Allocations (Local Support)	\$25,271,023	\$27,220,334
Rendition Fees	265,000	265,000
Investment Proceeds	0	0
Other Income	10,000	10,000
Total Revenues	\$25,546,023	\$27,495,334



2018/2019

PROPOSED BUDGET OVERVIEW

The 2018/2019 Proposed Budget is highlighted in the attached document as follows:

1. The 2018/2019 Proposed Budget of \$27,495,334 is an increase of 7.63% from the 2017/2018 Approved Budget of \$25,546,023.
2. The 2018/2019 Proposed Budget calls for a total of two hundred thirty-five (235) full-time positions, which is an increase of seven (7) new positions over the 2017/2018 Approved Budget. This is the first increase in the number of employees in over 20 years. The budget notes personnel by departments/divisions as follows:
 - **Office of Chief Appraiser Department.** The department has four (4) positions and includes the divisions of Chief Appraiser's Office, the Community Relations Officer, and Quality Control.
 - **Administrative Services Department.** The divisions included in this department are Administration, Finance/Purchasing, Human Resources, Customer Service, Appeals and Support, Building Services and the Appraisal Review Board (ARB). The department has thirty-four (34) employees and assists in coordinating the one hundred two (102) member ARB.
 - **Legal Services Department.** There are a total of three (3) employees in this department.
 - **Information Technology (IT) Department.** The divisions included are Technical Support, Systems Programming, Computer Support and Database Management. There are a total of thirteen (13) employees in this department. The Geographic Information System (GIS) division has been moved from the IT Department to the Appraisal Services Department for this budget period.
 - **Appraisal Services Department.** This department includes the divisions of Central Appraisal, Residential, Commercial, Business Personal Property, Property Records/Exemptions, and Geographic Information System (GIS) totaling one hundred eighty-one (181) employees.
3. For the 2018/2019 Proposed Budget a 3.0% merit increase is proposed for the District employees. This figure is tied directly to the average salary/merit increases and adjustments given by the taxing entities in 2017/2018, which was 2.86%. This information is obtained from an entity salary survey of all participating entities in the Appraisal District. DCAD bases any merit increases on what the taxing entities have afforded to their employees.
4. Overtime funds are included for appraisal support staff assisting with after hours informal and legally required formal hearings with property owners during the ARB process. Funds are also included for Building Services, Appeals and Support, Customer Service, and the Appraisal Departments during the ARB process.
5. Contract Labor includes funds for temporary services for the Business Personal Property verification and leased equipment projects, contract clerical help during the ARB process in Appeals and Support and Legal Services in processing lawsuits, and for security provided by off-duty police officers year round.

6. Other increases and decreases in the Proposed Budget are noted in the categories as follows:

Auto Expenses are for the monthly auto allowance for appraisers at \$700 per month and \$300 per month for management level employees. Funds were added for the six (6) new appraisal positions.

Supplies and Materials increased from last year's budget primarily in software costs for the upgrade of the District's ABRA payroll system. Postage costs were increased for the mailing of appraisal and ARB notices and for a postage rate increase. Slight cost increases were noted in computer supplies and printing.

Operational Services is the District's telephone communication system. A slight decrease was noted from the previous year. A new phone system was installed early in 2015 and has helped reduced operating costs.

Maintenance of Structure shows a slight increase overall. The most notable increases are in Building Maintenance in general upkeep and janitorial supplies. Most other costs remained constant.

Maintenance of Equipment increased in the line items of PC Maintenance and Software Maintenance. Software maintenance costs are budgeted to maintain the software for network and desktop applications, while PC Maintenance includes funds for maintenance and replacement of servers, network equipment, desktop devices, and the iPad computers used as field devices by the appraisal staff.

Contractual Services increased due to the estimated increase in the mailing of Appraisal Notices, Renditions, Homestead Applications, and Homestead Postcards. The production and mailing of the majority of these items is completed by a 3rd party vendor. A new printing contract was implemented in 2017/2018, but the cost increases are a result of the increase in the number of notices mailed. Costs for internet service has also increased as the public increasingly utilizes the vast amounts of information we make available on the DCAD web site.

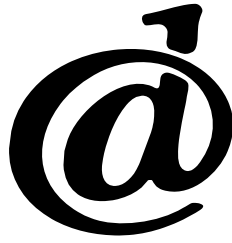
Sundry Expenses noted a decrease in the categories of Training costs and Dues and Subscriptions. Travel costs increased slightly as more appraisal personnel are taking IAAO Courses which are higher in costs and travel.

Insurance and Benefits noted the largest increase in Group Medical Insurance and Retirement, respectively. Group Medical costs are anticipated at a rate of 12% and the Retirement expense is at a rate of 20% to keep the employee program current. A slight increase was noted for Group Benefits which captures only the premium payments for all ancillary insurance programs and in the Medicare Tax category. General Insurance costs increased slightly in this category as well.

Professional Services rose overall from last year as a result of increased costs in ARB Compensation due to more hearing days and more total panels being anticipated to complete the increasing demands of the ARB process. There is also a proposed increase in funds for ARB member compensation fees being adjusted from \$160 per day service to \$175 per day. A large increase in Arbitration Expense was noted for additional filings of these activities. Auditing fees were also increased slightly.

Capital Expenditures decreased significantly as many of the IT hardware needs have been met in previous budgets. However, funds are still needed this year for a Dell server, disk arrays, and switches.

Technology Development and Capital Improvement includes no requested or budgeted funds for this fiscal year. Capital Improvement projects are funded from surplus funds approved by the Board of Directors upon the approval of the Capital Improvement Plan annually.



Dallas Central Appraisal District 10 Year Budget Analysis

	2009/2010	2010/2011	2011/2012	2012/2013	2013/2014
Budget Amount	\$21,799,127	\$21,733,893	\$21,516,555	\$21,516,555	\$21,872,977
Budget Increase/Decrease	\$419,064	-\$65,234	-\$217,338	\$0	\$356,422
% Budget Increase/Decrease	1.96%	-0.30%	-1.00%	0.00%	1.66%
Merit Increases	3.00%	0.00%	0.00%	0.00%	3.00%
Entity Salary Survey	3.19%	1.50%	1.09%	1.08%	3.13%
# of Personnel	245	240	232	229	229



Dallas Central Appraisal District 10 Year Budget Analysis

2014/2015	2015/2016	2016/2017	2017/2018	2018/2019
\$23,009,832	\$23,677,340	\$24,471,932	\$25,546,023	\$27,495,334
\$1,136,855	\$667,508	\$794,592	\$1,074,091	\$1,949,311
5.20%	2.90%	3.36%	4.39%	7.63%
3.00%	3.00%	2.50%	4.00%	3.00%
2.92%	3.14%	2.68%	3.80%	2.86%
228	228	228	228	235

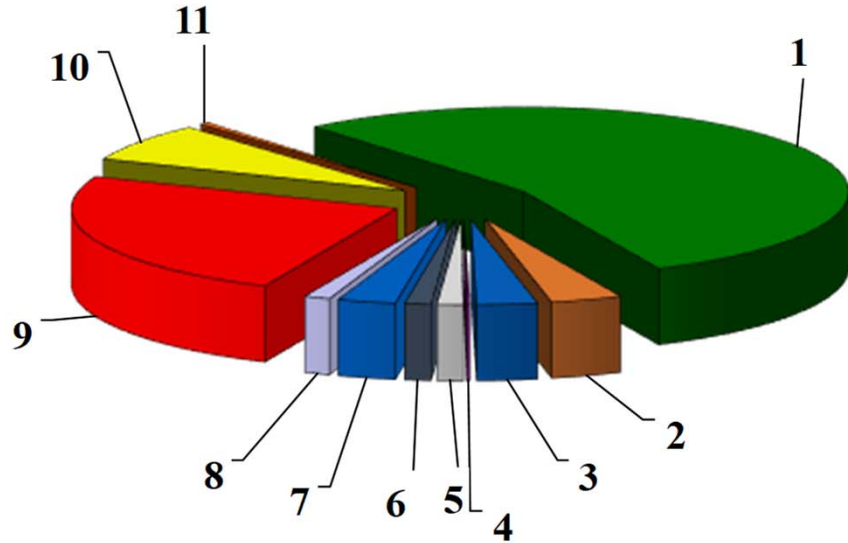
Dallas Central Appraisal District

Proposed Areas Of Change

	2017/2018	2018/2019	Increase or	Percent
	<u>Approved</u>	<u>Proposed</u>	<u>(Decrease)</u>	<u>Variance</u>
BUDGET EXPENDITURES:				
Salaries & Wages	\$14,178,856	\$14,932,929	\$754,073	5.32%
Auto Expense	\$928,005	\$973,067	\$45,062	4.86%
Supplies & Materials	\$726,457	\$821,124	\$94,667	13.03%
Operational Services	\$41,040	\$39,330	(\$1,710)	-4.17%
Maintenance of Structure	\$340,321	\$357,211	\$16,890	4.96%
Maintenance of Equipment	\$320,497	\$356,258	\$35,761	11.16%
Contractual Services	\$673,345	\$792,773	\$119,428	17.74%
Sundry Expenses	\$337,512	\$350,780	\$13,268	3.93%
Insurance & Benefits	\$6,238,135	\$6,743,287	\$505,152	8.10%
Professional Services	\$1,664,155	\$2,009,875	\$345,720	20.77%
Capital Expenditures	\$97,700	\$118,700	\$21,000	21.49%
Technology Development	\$0	\$0	\$0	0.00%
Contingency	\$0	\$0	\$0	0.00%
Total Expenditures	<u>\$25,546,023</u>	<u>\$27,495,334</u>	<u>\$1,949,311</u>	<u>7.63%</u>

2018/2019

Budget by Category

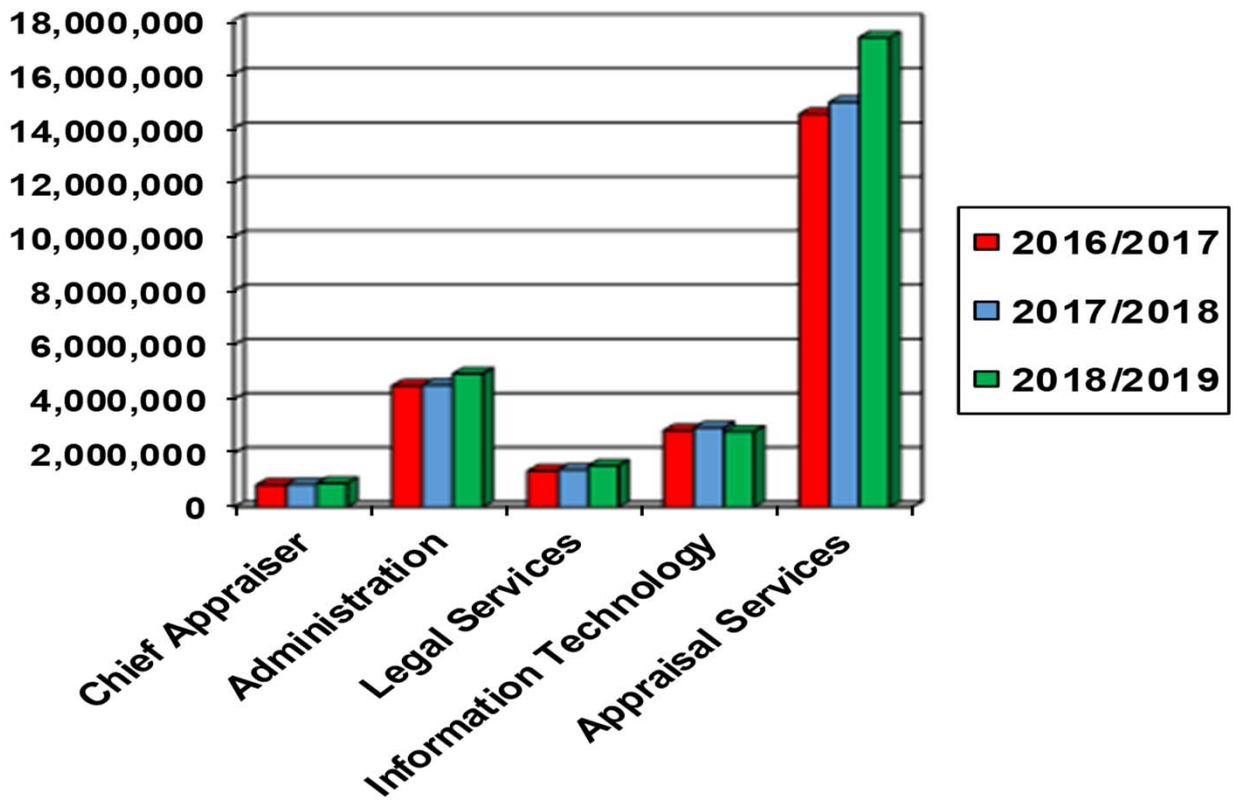


<u>Category</u>	<u>Budget Total</u>	<u>Percent</u>
1 Salaries & Wages	\$14,932,929	54.3%
2 Auto Expenses	973,067	3.5%
3 Supplies & Materials	821,124	3.0%
4 Operational Services	39,330	0.1%
5 Maintenance of Structure	357,211	1.3%
6 Maintenance of Equipment	356,258	1.3%
7 Contractual Services	792,773	2.9%
8 Sundry Expenses	350,780	1.3%
9 Insurance & Benefits	6,743,287	24.5%
10 Professional Services	2,009,875	7.3%
11 Capital Expenditures	118,700	0.5%
Total	\$27,495,334	100%

Dallas Central Appraisal District

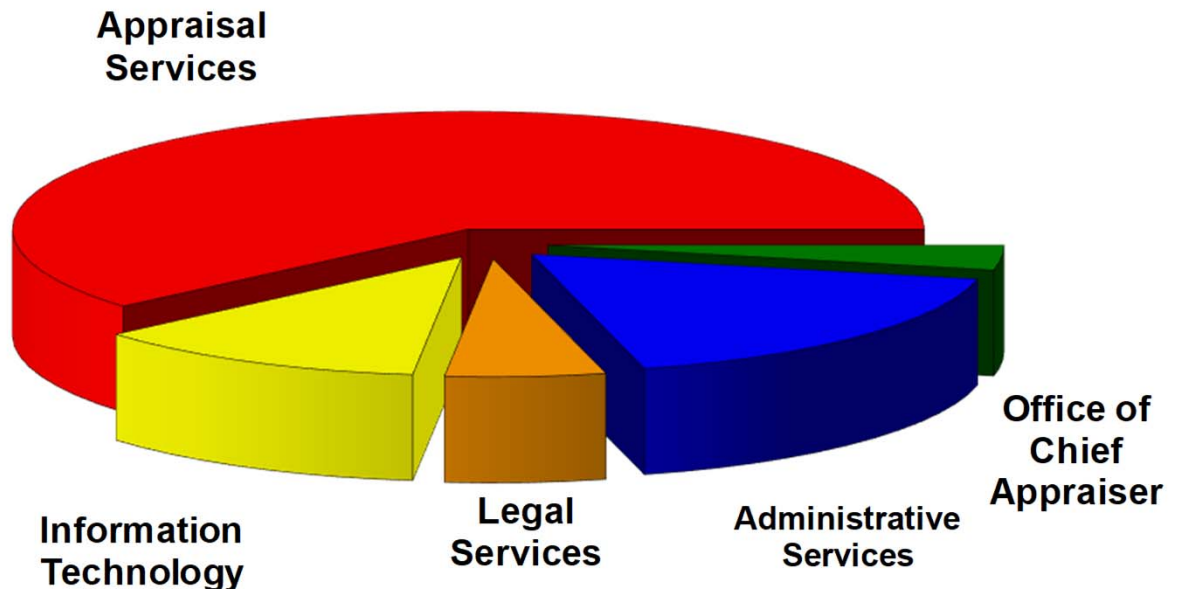
Budget Comparison

<u>Category</u>	<u>2016/2017 Approved</u>	<u>2016/2017 Actual</u>	<u>2017/2018 Approved</u>	<u>2018/2019 Proposed</u>
Consolidated				
Office of Chief Appraiser	\$828,325	\$877,171	\$842,306	\$884,708
Consolidated				
Administrative Services	4,491,128	4,727,800	4,515,551	4,930,389
Consolidated				
Legal Services	1,345,165	1,311,176	1,380,772	1,533,764
Consolidated				
Information Technology	2,838,095	2,861,857	2,942,382	2,788,994
Consolidated				
Appraisal Services	14,969,219	14,929,755	15,865,012	17,357,479
Contingency	0	0	0	0
Total	\$24,471,932	\$24,707,759	\$25,546,023	\$27,495,334



2018/2019

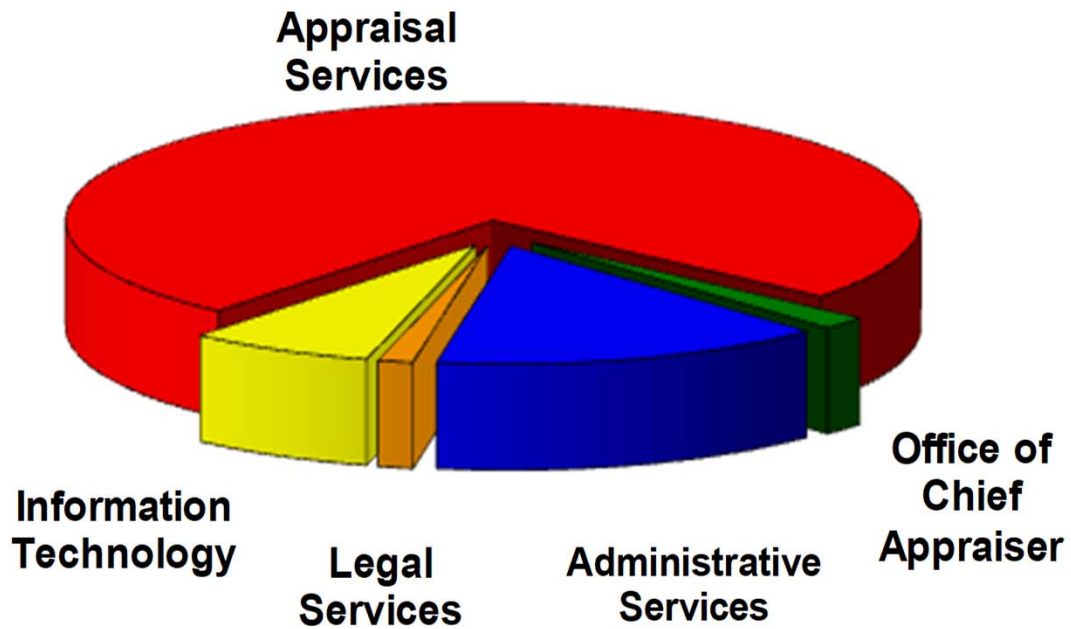
Budget By Department



<u>Department</u>	<u>Budget Total</u>	<u>Percent</u>
Office of Chief Appraiser	\$884,708	3.2%
Administrative Services	4,930,389	17.9%
Legal Services	1,533,764	5.6%
Information Technology	2,788,994	10.2%
Appraisal Services	<u>17,357,479</u>	<u>63.1%</u>
Total	\$27,495,334	100%

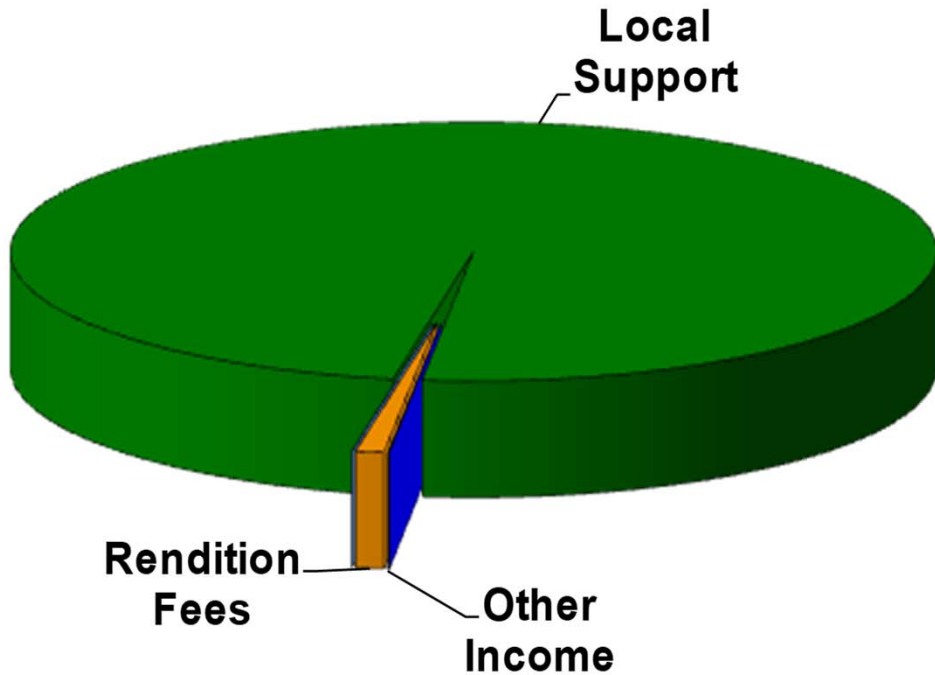
2018/2019

Personnel Breakdown



<u>Department</u>	<u>Number of Personnel</u>	<u>Percent</u>
Office of Chief Appraiser	4	1.7%
Administrative Services	34	14.5%
Legal Services	3	1.3%
Information Technology	13	5.5%
Appraisal Services	<u>181</u>	<u>77.0%</u>
Total	235	100%

2018/2019 Operating Funds Sources



<u>Source</u>	<u>Amount</u>	<u>Percent</u>
Local Support	\$27,220,334	99.00%
Investment Proceeds	0	0.00%
Rendition Fees	265,000	0.96%
Other Income	10,000	0.04%
Total	\$27,495,334	100.00%

Revenue Summary Budget Allocation Comparison

	<u>2017/2018 Approved Allocation</u>	%	<u>2018/2019 Proposed Allocation</u>	%
Local Support				
Municipalities	\$6,415,150	25.39%	\$6,890,932	25.32%
School Districts	\$10,432,199	41.28%	\$11,255,957	41.35%
County/County Wide	\$8,128,978	32.17%	\$8,776,056	32.24%
Special Districts				
Non-County Wide	\$294,696	1.17%	\$297,389	1.09%
Special Districts				
TOTAL	\$25,271,023	100%	\$27,220,334	100%

2018/2019

PROPOSED BUDGET ALLOCATIONS

	<u>2017/2018 Approved Allocation</u>	<u>2018/2019 Proposed Allocation</u>	<u>Increase or (Decrease)</u>	<u>% Change</u>
County/County-wide				
Special Districts:				
Dallas County	3,236,651	3,494,648	257,997	7.97%
D.C.H.D.	3,734,653	4,032,834	298,181	7.98%
D.C.C.C.D.	1,157,674	1,248,574	90,900	7.85%
Subtotal	8,128,978	8,776,056	647,078	7.96%
Non-County-Wide				
Special Districts:				
Dallas URD	206,830	211,327	4,497	2.17%
Valwood Imp. Authority	20,385	19,190	(1,195)	-5.86%
Irving FCD 1	6,488	6,717	229	3.53%
Irving FCD 3	9,970	10,633	663	6.65%
Dallas FCD #1	39,585	36,607	(2,978)	-7.52%
Denton County LID #1	1,877	1,940	63	3.36%
Denton County RUD #1	0	0	0	0.00%
Lancaster MUD #1	2,671	4,041	1,370	51.29%
Grand Prairie Metro URD	579	513	(66)	-11.40%
Northwest FCD	6,311	6,421	110	1.74%
Subtotal	294,696	297,389	2,693	0.91%

2018/2019

PROPOSED BUDGET ALLOCATIONS

	2017/2018	2018/2019	Increase or	% Change
	Approved	Proposed	(Decrease)	
Cities:	<u>Allocation</u>	<u>Allocation</u>		
Addison	104,774	106,840	2,066	1.97%
Balch Springs	27,015	29,806	2,791	10.33%
Carrollton	150,262	157,061	6,799	4.52%
Cedar Hill	95,600	102,675	7,075	7.40%
Cockrell Hill	4,574	4,872	298	6.52%
Combine	152	163	11	7.24%
Coppell	164,337	172,631	8,294	5.05%
Dallas	3,545,853	3,801,918	256,065	7.22%
DeSoto	114,579	123,608	9,029	7.88%
Duncanville	64,972	69,276	4,304	6.62%
Farmers Branch	127,037	134,632	7,595	5.98%
Ferris	303	381	78	25.74%
Garland	378,585	417,070	38,485	10.17%
Glenn Heights	14,379	16,604	2,225	15.47%
Grand Prairie	170,150	188,065	17,915	10.53%
Grapevine	2,072	2,341	269	12.98%
Highland Park	55,116	57,625	2,509	4.55%
Hutchins	14,506	16,332	1,826	12.59%
Irving	591,999	627,374	35,375	5.98%
Lancaster	78,214	85,907	7,693	9.84%
Lewisville	1,516	1,633	117	7.72%
Mesquite	200,955	221,274	20,319	10.11%
Ovilla	733	735	2	0.27%
Richardson	230,952	248,603	17,651	7.64%
Rowlett	115,564	128,289	12,725	11.01%
Sachse	36,870	40,694	3,824	10.37%
Seagoville	17,007	19,816	2,809	16.52%
Sunnyvale	17,260	19,381	2,121	12.29%
University Park	80,059	81,797	1,738	2.17%
Wilmer	8,567	11,923	3,356	39.17%
Wylie	1,188	1,606	418	35.19%
Total	6,415,150	6,890,932	475,782	7.42%

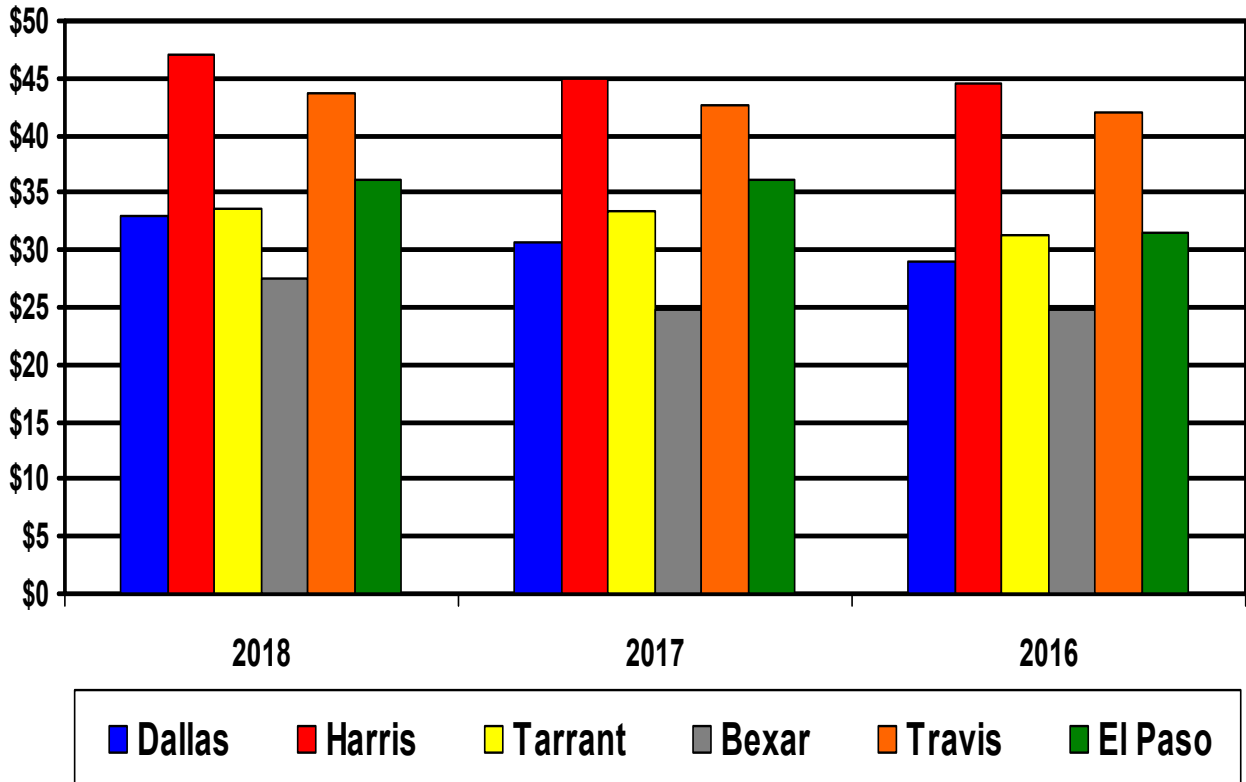
2018/2019

PROPOSED BUDGET ALLOCATIONS

	<u>2017/2018 Approved Allocation</u>	<u>2018/2019 Proposed Allocation</u>	<u>Increase or (Decrease)</u>	<u>% Change</u>
School Districts:				
Carrollton/F.B.	735,116	785,900	50,784	6.91%
Cedar Hill	163,528	177,640	14,112	8.63%
Coppell	553,043	584,143	31,100	5.62%
Dallas	4,627,678	5,024,165	396,487	8.57%
Dallas County Schools	68,717	0	(68,717)	-100.00%
DeSoto	132,847	150,917	18,070	13.60%
Duncanville	213,965	234,570	20,605	9.63%
Ferris	802	971	169	21.07%
Garland	835,727	930,404	94,677	11.33%
Grand Prairie	336,507	375,267	38,760	11.52%
Grapevine/Colleyville	13,081	13,987	906	6.93%
Highland Park	609,065	659,596	50,531	8.30%
Irving	599,317	627,536	28,219	4.71%
Lancaster	113,577	126,080	12,503	11.01%
Mesquite	368,753	408,208	39,455	10.70%
Richardson	1,008,228	1,095,628	87,400	8.67%
Sunnyvale	52,248	60,945	8,697	16.65%
Wilmer/Hutchins	0	0	0	0.00%
Total	10,432,199	11,255,957	823,758	7.90%

APPRAISAL DISTRICT COMPARISONS

	2018	Real	Personal	Total	Cost Per Parcel		
	<u>Budget Amount</u>	<u>Property</u>	<u>Property</u>	<u>Parcels</u>	<u>2018</u>	<u>2017</u>	<u>2016</u>
Dallas CAD	\$27,495,334	728,333	104,359	832,692	\$33.02	\$30.75	\$28.89
Harris CAD	\$85,562,087	1,438,267	382,188	1,820,455	\$47.00	\$45.06	\$44.55
Tarrant CAD	\$23,687,614	649,752	56,943	706,695	\$33.52	\$33.45	\$31.32
Bexar CAD	\$18,657,516	632,765	44,722	677,487	\$27.54	\$24.83	\$24.76
Travis CAD	\$18,827,658	387,990	43,359	431,349	\$43.65	\$42.69	\$42.09
El Paso CAD	\$14,954,129	376,530	36,275	412,805	\$36.23	\$36.13	\$31.57



APPRAISAL DISTRICT EMPLOYEE COMPARISONS

Appraisal District	2018 Budget	Total Parcels	Number of Employees	Parcels per Employee	Number of Appraisers	Parcels per Appraiser
Dallas Central Appraisal District	\$27,495,334	832,692	235	3,543	103	8,084
Harris Central Appraisal District	\$85,562,087	1,820,455	661	2,754	322	5,653
Tarrant Appraisal District	\$23,687,614	706,695	211	3,349	99	7,138
Bexar Appraisal District	\$18,657,516	677,487	157	4,315	59	11,482
Travis Central Appraisal District	\$18,827,658	431,349	123	3,507	65	6,636
El Paso Central Appraisal District	\$14,954,129	412,805	140	2,949	40	10,320

2017-2018 BUDGET/LEVY COMPARISON

	2017	2018	
	Tax Levy	Budget Amount	Cost As % Of Levy
Dallas CAD	\$6,249,011,113	\$27,495,334	0.44
Harris CAD*	\$11,069,676,943	\$85,562,087	0.77
Tarrant CAD	\$4,476,506,204	\$23,687,614	0.53
Bexar CAD	\$3,500,716,948	\$18,657,516	0.53
Travis CAD	\$4,007,819,939	\$18,827,658	0.47
El Paso CAD	\$1,134,387,928	\$14,954,129	1.32

* 2016 Tax Levy

ACCURACY OF APPRAISALS

	Median Level of Appraisals	Coefficient of Dispersion
Dallas Central Appraisal District	0.99	8.60
Harris Central Appraisal District	0.99	8.04
Tarrant Appraisal District	0.93	10.86
Bexar Appraisal District	0.99	7.24
Travis Central Appraisal District	0.99	7.20
El Paso Central Appraisal District	0.99	12.61

@

2017 -2018 Dallas Central Appraisal District Entity Salary Survey

Entity	Contact Person	Title	Increase	Comments
Town of Addison	Cindy Jeong	Human Resources Coordinator	4.00%	
City of Balch Springs	Bianca Sauls	Chief Financial Officer	4.00%	
City of Carrollton	Thania Saucedo	Admin Support Assistant	3.00%	
City of Cedar Hill	Angelica Morales	HR Generalist	3.00%	
City of Cockrell Hill	Bret Haney	City Administrator	3.00%	Effective January 2018
City of Combine	Robin Price	City Secretary	1.67%	
City of Coppell	Stephanie Jenkins	Sr HR Advisor	3.00%	
City of Dallas	Laquisha Bill	Sr. HR Analyst	3.00%	
City of Desoto	Jenette Naranja	HR Staff Assistant	2.00%	
City of Duncanville	Jennifer Otey	HR Manager	2.00%	2% General Employees, 3% Public Safety
City of Farmers Branch	Sherrelle Evans-Jones	Chief Financial Officer	4.00%	
City of Ferris	Melissa Gomez	Finance Director	5.00%	
City of Garland	Beatriz Sapene	Sr HR Analyst-Compensation	3.00%	
City of Glenn Heights	Kacye Harvey	Administrator-Organizational Development	4.80%	
City of Grand Prairie	Diana Ortiz	CFO	3.00%	
City of Grapevine	Gary Livingston	Management Services Director	5.00%	
Town of Highland Park	Steven Alexander	CFO	3.00%	
City of Hutchins	Trudy Lewis	Budget/HR Director	3.00%	
City of Irving	Corey Hendon	Sr. HR Specialist I	3.50%	
City of Lancaster	Dori Lee	HR Director	3.00%	
City of Lewisville	Rena Cates	HR Specialist	2.00%	
City of Mesquite	Kerry Graham	Employee Services Coordinator	2.00%	
City of Ovilla	Linda Harding	City Accountant	3.00%	
City of Richardson	Chelsea Curran	Sr. Compensation Analyst	3.00%	
City of Rowlett	Amanda Carter	Budget Officer	7.00%	
City of Sachse	Melinda Walter	HR Manager	4.00%	
City of Seagoville	Cindy Brown	Director of Human Resources	3.00%	
Town of Sunnyvale	Gretchen Delgado	Comp & Benefits Specialist	4.73%	
City of University Park	Alicia Dorsey	Director of HR	3.00%	
City of Wilmer	Denny Wheat	City Administrator-Interim	5.00%	
City of Wylie	Kortney House	HR Analyst	4.56%	
Average Cities			3.46%	

2017 -2018 Dallas Central Appraisal District Entity Salary Survey

Entity	Contact Person	Title	Increase	Comments
Carrollton/Farmers Branch ISD	Rebecca McDowell	Director - Payroll	4.00%	4% Teachers 3% Prof/Admin
Cedar Hill ISD	Sherra McGaha	Chief Financial Officer	2.00%	Teachers only
Coppell ISD	Vicky Cason	Administrative Assistant	3.00%	
Dallas ISD	E. Patrick Ekong	Compensation Manager	1.13%	
DeSoto ISD	Sue Land	Employment & Data Management Coord.	0.00%	
Duncanville ISD	Jan Arrington	Chief Financial Officer	3.00%	
Ferris ISD	TJ Knight	Business Manager	2.00%	
Garland ISD	Gilberto Prado	Budget Director	2.00%	2.5% Professionals, 2% Teachers, 1.75% Administrators
Grand Prairie ISD	Nancy Bridges	Deputy Superintendent Business Ops	3.00%	
Grapevine/Colleyville ISD	DaiAnn Mooney	Chief Financial Officer	2.00%	
Highland Park ISD	Dr. Brent Ringo	Asst. Superintendent of Business	0.00%	One time payment \$500 Nonexempt \$1,000 Exempt
Irving ISD	Mia Stroy	Compensation and Benefits Manager	2.00%	
Lancaster ISD	Leon Fisher	Chief Financial Officer	3.00%	
Mesquite ISD	Lanny Frasier	Asst. Superintendent-Personnel Services	2.00%	
Richardson ISD	Mary Welch	Director of Compensation	3.00%	
Sunnyvale ISD	Margaret Davis	Business Manager	2.00%	
Average School Districts			2.13%	

Dallas County	Jim Sparkman	HR Analyst IV	3.00%	
DCCCD	John Robertson	CFO	3.00%	
Average Countywide			3.00%	

Total Aggregated Average for All Entities			2.86%	
--	--	--	--------------	--

2018/2019 Dallas Central Appraisal District Proposed Budget Allocation Analysis

ENTITY and ENTITY CODE		2016 Grand Total Taxable Value 9/2016	2017 Grand Total Taxable Value 9/2017	Taxable Value Change	Taxable Value Percent Change	2016 Tax Rates	2017 Tax Rates	Tax Rate Change	Tax Rate Percent Change	2016 Levy	2017 Levy	Levy Change	Levy Percent Change	2017/2018 Budget Allocation	2018/2019 Proposed Budget Allocation	Budget Allocation Change	Budget Allocation Percent Change
CITIES																	
Addison	CA	\$4,303,028,610	\$4,459,781,021	\$156,752,411	3.64%	0.560472	0.550000	(0.010472)	(1.87%)	\$24,117,271	\$24,528,796	\$411,525	1.71%	\$104,774	\$106,840	2,066	1.97%
Balch Springs	CB	774,396,129	852,415,626	78,019,497	10.07%	0.803000	0.803000	0.000000	0.00%	6,218,401	6,844,897	626,497	10.07%	27,015	29,806	2,791	10.33%
Carrollton - Dallas Co.	CC	5,729,786,602	6,012,639,706	282,853,104	4.94%	0.603700	0.599700	(0.004000)	(0.66%)	34,590,722	36,057,800	1,467,079	4.24%	150,262	157,061	6,799	4.52%
Cedar Hill - Dallas Co.	CH	3,149,455,467	3,373,164,476	223,709,009	7.10%	0.698760	0.698760	0.000000	0.00%	22,007,135	23,570,324	1,563,189	7.10%	95,600	102,675	7,075	7.40%
Cockrell Hill	CL	94,038,769	105,935,987	11,897,218	12.65%	1.119407	1.058833	(0.060574)	(5.41%)	1,052,677	1,121,685	69,009	6.56%	4,574	4,872	298	6.52%
Combine	OM	11,117,837	10,906,628	(211,209)	(1.90%)	0.330000	0.350000	0.020000	6.06%	36,689	38,173	1,484	4.05%	152	163	11	7.24%
Coppell - Dallas Co	CO	6,528,050,771	6,838,433,814	310,383,043	4.75%	0.579500	0.579500	0.000000	0.00%	37,830,554	39,628,724	1,798,170	4.75%	164,337	172,631	8,294	5.05%
Dallas	DA	104,307,190,201	111,841,989,764	7,534,799,563	7.22%	0.782500	0.780400	(0.002100)	(0.27%)	816,203,763	872,814,888	56,611,125	6.94%	3,545,853	3,801,918	256,065	7.22%
DeSoto	CS	3,540,368,459	3,835,514,625	295,146,166	8.34%	0.744900	0.739900	(0.005000)	(0.67%)	26,372,205	28,378,973	2,006,768	7.61%	114,579	123,608	9,029	7.88%
Duncanville	CV	1,972,023,747	2,097,223,216	125,199,469	6.35%	0.758447	0.758447	0.000000	0.00%	14,956,755	15,906,327	949,572	6.35%	64,972	69,276	4,304	6.62%
Farmers Branch	CF	4,855,783,963	5,131,542,465	275,758,502	5.68%	0.602267	0.602267	0.000000	0.00%	29,244,784	30,905,587	1,660,803	5.68%	127,037	134,632	7,595	5.98%
Ferris	FE	9,916,016	12,676,916	2,760,900	27.84%	0.687134	0.687134	0.000000	0.00%	68,136	87,107	18,971	27.84%	303	381	78	25.74%
Garland - Dallas Co	CG	12,367,778,205	13,589,018,269	1,221,240,064	9.87%	0.704600	0.704600	0.000000	0.00%	87,143,365	95,748,223	8,604,857	9.87%	378,585	417,070	38,485	10.17%
Glenn Heights - Dallas Co	CE	353,751,685	430,348,384	76,596,699	21.65%	0.935530	0.885434	(0.050096)	(5.35%)	3,309,453	3,810,451	500,998	15.14%	14,379	16,604	2,225	15.47%
Grand Prairie - Dallas Co	CP	5,845,550,495	6,444,335,155	598,784,660	10.24%	0.669998	0.669998	0.000000	0.00%	39,165,071	43,176,917	4,011,846	10.24%	170,150	188,065	17,915	10.53%
Grapevine	GV	164,595,285	185,938,272	21,342,987	12.97%	0.289271	0.289271	0.000000	0.00%	476,126	537,865	61,739	12.97%	2,072	2,341	269	12.98%
Highland Park	TH	5,766,024,470	6,012,769,984	246,745,514	4.28%	0.220000	0.220000	0.000000	0.00%	12,685,254	13,228,094	542,840	4.28%	55,116	57,625	2,509	4.55%
Hutchins	CU	489,204,571	549,790,158	60,585,587	12.38%	0.682459	0.682459	0.000000	0.00%	3,338,621	3,752,092	413,472	12.38%	14,506	16,332	1,826	12.59%
Irving	CI	22,937,014,000	24,242,770,872	1,305,756,872	5.69%	0.594100	0.594100	0.000000	0.00%	136,268,800	144,026,302	7,757,502	5.69%	591,999	627,374	35,375	5.98%
Lancaster	CN	2,075,125,683	2,273,706,062	198,580,379	9.57%	0.867500	0.867500	0.000000	0.00%	18,001,715	19,724,400	1,722,685	9.57%	78,214	85,907	7,693	9.84%
Lewisville	LE	80,333,828	86,576,143	6,242,315	7.77%	0.436086	0.436086	0.000000	0.00%	350,325	377,546	27,222	7.77%	1,516	1,633	117	7.72%
Mesquite - Dallas Co	CM	6,733,493,379	7,394,258,527	660,765,148	9.81%	0.687000	0.687000	0.000000	0.00%	46,259,100	50,798,556	4,539,457	9.81%	200,955	221,274	20,319	10.11%
Ovilla	OV	24,119,827	25,181,311	1,061,484	4.40%	0.700000	0.680399	(0.019601)	(2.80%)	168,839	171,333	2,495	1.48%	733	735	2	0.27%
Richardson	CR	8,504,082,476	9,129,322,804	625,240,328	7.35%	0.625160	0.625160	0.000000	0.00%	53,164,122	57,072,874	3,908,752	7.35%	230,952	248,603	17,651	7.64%
Rowlett - Dallas Co	CW	3,379,658,926	3,789,220,379	409,561,453	12.12%	0.787173	0.777173	(0.010000)	(1.27%)	26,603,763	29,448,798	2,845,035	10.69%	115,564	128,289	12,725	11.01%
Sachse	CK	1,120,560,676	1,250,407,793	129,847,117	11.59%	0.757279	0.747279	(0.010000)	(1.32%)	8,485,771	9,344,035	858,264	10.11%	36,870	40,694	3,824	10.37%
Seagoville - Dallas Co	CJ	526,678,887	611,597,202	84,918,315	16.12%	0.743800	0.743800	0.000000	0.00%	3,917,438	4,549,060	631,622	16.12%	17,007	19,816	2,809	16.52%
Sunnyvale	TS	973,479,636	1,076,713,864	103,234,228	10.60%	0.407962	0.413088	0.005126	1.26%	3,971,427	4,447,776	476,349	11.99%	17,260	19,381	2,121	12.29%
University Park	CQ	7,406,921,428	7,548,899,037	141,977,609	1.92%	0.248761	0.248761	0.000000	0.00%	18,425,532	18,778,717	353,185	1.92%	80,059	81,797	1,738	2.17%
Wilmer	CT	392,220,517	544,105,189	151,884,672	38.72%	0.503000	0.502900	(0.000100)	(0.02%)	1,972,869	2,736,305	763,436	38.70%	8,567	11,923	3,356	39.17%
Wylie	WY	3,242,421,426	47,246,716	14,825,290	45.73%	0.848900	0.781000	(0.067900)	(8.00%)	275,225	368,997	93,771	34.07%	1,188	1,606	418	35.19%
COUNTYWIDE ENTITIES																	
Dallas County	DC	207,449,828,888	223,639,375,599	16,189,546,711	7.80%	0.243100	0.243100	0.000000	0.00%	504,310,534	543,667,322	39,356,788	7.80%	3,236,651	3,494,648	257,997	7.97%
Dallas Co Community College	DO	216,767,767,721	230,715,898,093	13,948,130,372	6.43%	0.122933	0.124238	0.001305	1.06%	266,479,120	286,636,817	20,157,698	7.56%	1,157,674	1,248,574	90,900	7.85%
Parkland Hospital	PH	208,269,657,764	224,550,318,979	16,280,661,215	7.82%	0.279400	0.279400	0.000000	0.00%	581,905,424	627,393,591	45,488,167	7.82%	3,734,653	4,032,834	298,181	7.98%
SCHOOL DISTRICTS																	
Carrollton/Farmers Branch ISD	AS	14,783,835,446	15,880,626,671	1,096,791,225	7.42%	1.391700	1.381000	(0.010700)	(0.77%)	205,746,638	219,311,454	13,564,816	6.59%	735,116	785,900	50,784	6.91%
Cedar Hill ISD	ES	3,019,042,685	3,269,912,337	250,869,652	8.31%	1.516000	1.516000	0.000000	0.00%	45,768,687	49,571,871	3,803,184	8.31%	163,528	177,640	14,112	8.63%
Coppell ISD	OS	10,369,616,083	11,031,299,124	661,683,041	6.38%	1.492700	1.477700	(0.015000)	(1.00%)	154,787,259	163,009,507	8,222,248	5.31%	553,043	584,143	31,100	5.62%
Dallas ISD	DS	101,023,617,187	109,355,515,261	8,331,898,074	8.25%	1.282085	1.282085	0.000000	0.00%	1,295,208,642	1,402,030,658	106,822,016	8.25%	4,627,678	5,024,162	396,484	8.57%
DeSoto ISD	SS	2,546,694,497	2,826,475,360	279,780,863	10.99%	1.460000	1.490000	0.030000	2.05%	37,181,740	42,114,483	4,932,743	13.27%	132,847	150,917	18,070	13.60%
Duncanville ISD	US	3,935,982,438	4,302,290,641	366,308,203	9.31%	1.521480	1.521480	0.000000	0.00%	59,885,186	65,458,492	5,573,306	9.31%	213,965	234,570	20,605	9.63%
Ferris ISD	FS	16,558,646	19,534,163	2,975,517	17.97%	1.355000	1.387300	0.032300	2.38%	224,370	270,997	46,628	20.78%	802	971	169	21.07%
Garland ISD	GS	16,020,949,193	17,783,306,461	1,762,357,268	11.00%	1.460000	1.460000	0.000000	0.00%	233,905,858	259,636,274	25,730,416	11.00%	835,727	930,404	94,677	11.33%
Grand Prairie ISD	PS	5,904,860,640	6,565,592,719	660,732,079	11.19%	1.595000	1.595000	0.000000	0.00%	94,182,527	104,721,204	10,538,677	11.19%	336,507	375,267	38,760	11.52%
Grapevine-Colleyville ISD	VS	262,133,022	279,455,100	17,322,078	6.61%	1.396700	1.396700	0.000000	0.00%	3,661,212	3,903,149	241,937	6.61%	13,081	13,987	906	6.93%
Highland Park ISD	HS	14,788,497,285	15,297,986,218	509,488,933	3.45%	1.152700	1.203200	0.050500	4.38%	170,467,008	184,065,370	13,598,362	7.98%	609,065	659,596	50,531	8.30%
Irving ISD	IS	11,608,222,345	12,234,076,233	625,853,888	5.39%	1.445000	1.431400	(0.013600)	(0.94%)	167,738,813	175,118,567	7,379,754	4.40%	599,317	627,536	28,219	4.71%
Lancaster ISD	LS	2,064,181,065	2,284,647,912	220,466,847	10.68%	1.540000	1.540000	0.000000	0.00%	31,788,388	35,183,578	3,395,189	10.68%	113,577	126,080	12,503	11.01%
Mesquite ISD	MS	7,069,024,202	7,802,296,468	733,272,266	10.37%	1.460000	1.460000	0.000000	0.00%	103,207,753	113,913,528	10,705,775	10.37%	368,753	408,208	39,455	10.70%
Richardson ISD	RS	20,300,423,138	21,995,135,418	1,694,712,280	8.35%	1.390050	1.390050	0.000000	0.00%	282,186,032	305,743,380	23,557,348	8.35%	1,008,228	1,095,628	87,400	8.67%
Sunnyvale ISD	YS	1,025,475,993	1,118,890,702	93,414,709	9.11												

2018/2019 Dallas Central Appraisal District Proposed Budget Allocation Analysis

SPECIAL DISTRICTS																	
Dallas County FCD #1	DD	404,971,153	420,199,855	15,228,702	3.76%	2.250000	2.000000	(0.250000)	(11.11%)	9,111,851	8,403,997	(707,854)	(7.77%)	39,585	36,607	(2,978)	(7.52%)
Dallas County URD	DM	3,676,388,303	3,884,276,979	207,888,676	5.65%	1.295000	1.249000	(0.046000)	(3.55%)	47,609,229	48,514,619	905,391	1.90%	206,830	211,327	4,497	2.17%
Denton Co. LID #1	NL	234,834,604	243,413,011	8,578,407	3.65%	0.184000	0.183000	(0.001000)	(0.54%)	432,096	445,446	13,350	3.09%	1,877	1,940	63	3.36%
Denton Co. RUD #1	NR	201,598,839	209,931,458	8,332,619	4.13%	0.000000	0.000000	0.000000	0.00%	0	0	0	0.00%	0	0	0	0.00%
Grand Prairie Metro URD	GU	22,219,593	19,633,843	(2,585,750)	(11.64%)	0.600000	0.600000	0.000000	0.00%	133,318	117,803	(15,515)	(11.64%)	579	513	(66)	(11.40%)
Irving FCD, Section I	IF	329,668,824	345,737,177	16,068,353	4.87%	0.453000	0.446000	(0.007000)	(1.55%)	1,493,400	1,541,988	48,588	3.25%	6,488	6,717	229	3.53%
Irving FCD, Section III	ID	1,835,986,565	1,952,759,646	116,773,081	6.36%	0.125000	0.125000	0.000000	0.00%	2,294,983	2,440,950	145,966	6.36%	9,970	10,633	663	6.65%
Lancaster MUD #1	LM	58,000,645	92,761,773	34,761,128	59.93%	1.060000	1.000000	(0.060000)	(5.66%)	614,807	927,618	312,811	50.88%	2,671	4,041	1,370	51.29%
Northwest Dallas Co FCD	NF	484,261,721	491,385,801	7,124,080	1.47%	0.300000	0.300000	0.000000	0.00%	1,452,785	1,474,157	21,372	1.47%	6,311	6,421	110	1.74%
Valwood Improvement Auth.	FF	1,876,916,432	2,002,514,031	125,597,599	6.69%	0.250000	0.220000	(0.030000)	(12.00%)	4,692,291	4,405,531	(286,760)	(6.11%)	20,385	19,190	(1,195)	(5.86%)

2018/2019 Dallas Central Appraisal District Proposed Budget Allocation Analysis with Dallas County Schools included in Allocation

ENTITY and ENTITY CODE		2016 Grand Total Taxable Value 9/2016	2017 Grand Total Taxable Value 9/2017	Taxable Value Change	Taxable Value Percent Change	2016 Tax Rates	2017 Tax Rates	Tax Rate Change	Tax Rate Percent Change	2016 Levy	2017 Levy	Levy Change	Levy Percent Change	2017/2018 Budget Allocation	2018/2019 Proposed Budget Allocation	Budget Allocation Change	Budget Allocation Percent Change
CITIES																	
Addison	CA	\$4,303,028,610	\$4,459,781,021	\$156,752,411	3.64%	0.560472	0.550000	(0.010472)	(1.87%)	\$24,117,271	\$24,528,796	\$411,525	1.71%	\$104,774	\$106,459	1,685	1.61%
Balch Springs	CB	774,396,129	852,415,626	78,019,497	10.07%	0.803000	0.803000	0.000000	0.00%	6,218,401	6,844,897	626,497	10.07%	27,015	29,697	2,682	9.93%
Carrollton - Dallas Co.	CC	5,729,786,602	6,012,639,706	282,853,104	4.94%	0.603700	0.599700	(0.004000)	(0.66%)	34,590,722	36,057,800	1,467,079	4.24%	150,262	156,517	6,255	4.16%
Cedar Hill - Dallas Co.	CH	3,149,455,467	3,373,164,476	223,709,009	7.10%	0.698760	0.698760	0.000000	0.00%	22,007,135	23,570,324	1,563,189	7.10%	95,600	102,294	6,694	7.00%
Cockrell Hill	CL	94,038,769	105,935,987	11,897,218	12.65%	1.119407	1.058833	(0.060574)	(5.41%)	1,052,677	1,121,685	69,009	6.56%	4,574	4,872	298	6.52%
Combine	OM	11,117,837	10,906,628	(211,209)	(1.90%)	0.330000	0.350000	0.020000	6.06%	36,689	38,173	1,484	4.05%	152	163	11	7.24%
Coppell - Dallas Co	CO	6,528,050,771	6,838,433,814	310,383,043	4.75%	0.579500	0.579500	0.000000	0.00%	37,830,054	39,628,724	1,798,670	4.75%	164,337	172,005	7,668	4.67%
Dallas	DA	104,307,190,201	111,841,989,764	7,534,799,563	7.22%	0.782500	0.780400	(0.002100)	(0.27%)	816,203,763	872,814,888	56,611,125	6.94%	3,545,853	3,788,363	242,510	6.84%
DeSoto	CS	3,540,368,459	3,835,514,625	295,146,166	8.34%	0.744900	0.739900	(0.005000)	(0.67%)	26,372,205	28,378,973	2,006,768	7.61%	114,579	123,172	8,593	7.50%
Duncanville	CV	1,972,023,747	2,097,233,216	125,199,469	6.35%	0.758447	0.758447	0.000000	0.00%	14,956,755	15,906,327	949,572	6.35%	64,972	69,031	4,059	6.25%
Farmers Branch	CF	4,855,783,963	5,131,542,465	275,758,502	5.68%	0.602267	0.602267	0.000000	0.00%	29,244,784	30,905,587	1,660,802	5.68%	127,037	134,142	7,105	5.59%
Ferris	FE	9,916,016	12,676,916	2,760,900	27.84%	0.687134	0.687134	0.000000	0.00%	68,136	87,107	18,971	27.84%	303	381	78	25.74%
Garland - Dallas Co	CG	12,367,778,205	13,589,018,269	1,221,240,064	9.87%	0.704600	0.704600	0.000000	0.00%	87,143,365	95,748,223	8,604,857	9.87%	378,585	415,600	37,015	9.78%
Glenn Heights - Dallas Co	CE	353,751,685	430,348,384	76,596,699	21.65%	0.935530	0.885434	(0.050096)	(5.35%)	3,309,453	3,810,451	500,998	15.14%	14,379	16,550	2,171	15.10%
Grand Prairie - Dallas Co	CP	5,845,550,495	6,444,335,155	598,784,660	10.24%	0.669998	0.669998	0.000000	0.00%	39,165,071	43,176,917	4,011,845	10.24%	170,150	187,412	17,262	10.15%
Grapevine	GV	164,595,285	185,938,272	21,342,987	12.97%	0.289271	0.289271	0.000000	0.00%	476,126	537,865	61,739	12.97%	2,072	2,341	269	12.98%
Highland Park	TH	5,766,024,470	6,012,769,984	246,745,514	4.28%	0.220000	0.220000	0.000000	0.00%	12,685,254	13,228,094	542,840	4.28%	55,116	57,408	2,292	4.16%
Hutchins	CU	489,204,571	549,790,158	60,585,587	12.38%	0.682459	0.682459	0.000000	0.00%	3,338,621	3,752,092	413,472	12.38%	14,506	16,278	1,772	12.22%
Irving	CI	22,937,014,000	24,242,770,872	1,305,756,872	5.69%	0.594100	0.594100	0.000000	0.00%	136,268,800	144,026,302	7,757,502	5.69%	591,999	625,142	33,143	5.60%
Lancaster	CN	2,075,125,683	2,273,706,062	198,580,379	9.57%	0.867500	0.867500	0.000000	0.00%	18,001,715	19,724,400	1,722,685	9.57%	78,214	85,608	7,394	9.45%
Lewisville	LE	80,333,828	86,576,143	6,242,315	7.77%	0.436086	0.436086	0.000000	0.00%	350,325	377,546	27,222	7.77%	1,516	1,633	117	7.72%
Mesquite - Dallas Co	CM	6,733,493,379	7,394,258,527	660,765,148	9.81%	0.687000	0.687000	0.000000	0.00%	46,259,100	50,798,556	4,539,457	9.81%	200,955	220,485	19,530	9.72%
Ovilla	OV	24,119,827	25,181,311	1,061,484	4.40%	0.700000	0.680399	(0.019601)	(2.80%)	168,839	171,333	2,495	1.48%	733	735	2	0.27%
Richardson	CR	8,504,082,476	9,129,322,804	625,240,328	7.35%	0.625160	0.625160	0.000000	0.00%	53,164,122	57,072,874	3,908,752	7.35%	230,952	247,732	16,780	7.27%
Rowlett - Dallas Co	CW	3,379,658,926	3,789,220,379	409,561,453	12.12%	0.787173	0.777173	(0.010000)	(1.27%)	26,603,763	29,448,798	2,845,035	10.69%	115,564	127,827	12,263	10.61%
Sachse	CK	1,120,560,676	1,250,407,793	129,847,117	11.59%	0.757279	0.747279	(0.010000)	(1.32%)	8,485,771	9,344,035	858,264	10.11%	36,870	40,558	3,688	10.00%
Seagoville - Dallas Co	CJ	526,678,887	611,597,202	84,918,315	16.12%	0.743800	0.743800	0.000000	0.00%	3,917,438	4,549,060	631,622	16.12%	17,007	19,735	2,728	16.04%
Sunnyvale	TS	973,479,636	1,076,713,864	103,234,228	10.60%	0.407962	0.413088	0.005126	1.26%	3,971,427	4,447,776	476,349	11.99%	17,260	19,299	2,039	11.81%
University Park	CQ	7,406,921,428	7,548,899,037	141,977,609	1.92%	0.248761	0.248761	0.000000	0.00%	18,425,532	18,778,717	353,185	1.92%	80,059	81,498	1,439	1.80%
Wilmer	CT	392,220,517	544,105,189	151,884,672	38.72%	0.503000	0.502900	(0.000100)	(0.02%)	1,972,869	2,736,305	763,436	38.70%	8,567	11,868	3,301	38.53%
Wylie	WY	32,421,426	47,246,716	14,825,290	45.73%	0.848900	0.781000	(0.067900)	(8.00%)	275,225	368,997	93,771	34.07%	1,188	1,606	418	35.19%
COUNTYWIDE ENTITIES																	
Dallas County	DC	207,449,828,888	223,639,375,599	16,189,546,711	7.80%	0.243100	0.243100	0.000000	0.00%	504,310,534	543,667,322	39,356,788	7.80%	3,236,651	3,497,208	260,557	8.05%
Dallas Co Community College	DO	216,767,767,721	230,715,898,093	13,948,130,372	6.43%	0.122933	0.124238	0.001305	1.06%	266,479,120	286,636,817	20,157,698	7.56%	1,157,674	1,244,121	86,447	7.47%
Parkland Hospital	PH	208,269,657,764	224,550,318,979	16,280,661,215	7.82%	0.279400	0.279400	0.000000	0.00%	581,905,424	627,393,591	45,488,167	7.82%	3,734,653	4,035,788	301,135	8.06%
SCHOOL DISTRICTS																	
Carrollton/Farmers Branch ISD	AS	14,783,835,446	15,880,626,671	1,096,791,225	7.42%	1.391700	1.381000	(0.010700)	(0.77%)	205,746,638	219,311,454	13,564,816	6.59%	735,116	782,045	46,929	6.38%
Cedar Hill ISD	ES	3,019,042,685	3,269,912,337	250,869,652	8.31%	1.516000	1.516000	0.000000	0.00%	45,768,687	49,571,871	3,803,184	8.31%	163,528	176,769	13,241	8.10%
Coppell ISD	OS	10,369,616,083	11,031,299,124	661,683,041	6.38%	1.492700	1.477700	(0.015000)	(1.00%)	154,787,259	163,009,507	8,222,248	5.31%	553,043	581,277	28,234	5.11%
Dallas ISD	DS	101,023,617,187	109,355,515,261	8,331,898,074	8.25%	1.282085	1.282085	0.000000	0.00%	1,295,208,642	1,402,030,658	106,822,015	8.25%	4,627,678	4,999,512	371,834	8.04%
DeSoto ISD	SS	2,546,694,497	2,826,475,360	279,780,863	10.99%	1.460000	1.490000	0.030000	2.05%	37,181,740	42,114,483	4,932,743	13.27%	132,847	150,176	17,329	13.04%
Duncanville ISD	US	3,935,982,438	4,302,290,641	366,308,203	9.31%	1.521480	1.521480	0.000000	0.00%	59,885,186	65,458,492	5,573,306	9.31%	213,965	233,419	19,454	9.09%
Ferris ISD	FS	16,558,646	19,534,163	2,975,517	17.97%	1.355000	1.387300	0.032300	2.38%	224,370	270,997	46,628	20.78%	802	966	164	20.45%
Garland ISD	GS	16,020,949,193	17,783,306,461	1,762,357,268	11.00%	1.460000	1.460000	0.000000	0.00%	233,905,858	259,636,274	25,730,416	11.00%	835,727	925,839	90,112	10.78%
Grand Prairie ISD	PS	5,904,860,640	6,565,592,719	660,732,079	11.19%	1.595000	1.595000	0.000000	0.00%	94,182,527	104,721,204	10,538,677	11.19%	336,507	373,426	36,919	10.97%
Grapevine-Colleyville ISD	VS	262,133,022	279,455,100	17,322,078	6.61%	1.396700	1.396700	0.000000	0.00%	3,661,212	3,903,149	241,937	6.61%	13,081	13,918	837	6.40%
Highland Park ISD	HS	14,788,497,285	15,297,986,218	509,488,933	3.45%	1.152700	1.203200	0.050500	4.38%	170,467,008	184,065,370	13,598,362	7.98%	609,065	656,360	47,295	7.77%
Irving ISD	IS	11,608,222,345	12,234,076,233	625,853,888	5.39%	1.445000	1.431400	(0.013600)	(0.94%)	167,738,813	175,118,567	7,379,754	4.40%	599,317	624,457	25,140	4.19%
Lancaster ISD	LS	2,064,181,065	2,284,647,912	220,466,847	10.68%	1.540000	1.540000	0.000000	0.00%	31,788,388	35,183,578	3,395,189	10.68%	113,577	125,461	11,884	10.46%
Mesquite ISD	MS	7,069,024,202	7,802,296,468	733,272,266	10.37%	1.460000	1.460000	0.000000	0.00%	103,207,753	113,913,528	10,705,775	10.37%	368,753	406,205	37,452	10.16%
Richardson ISD	RS	20,300,423,138	21,995,135,418	1,694,712,280	8.35%	1.390050	1.390050	0.000000	0.00%	282,186,032	305,743,380	23,557,348	8.35%	1,008,228	1,090,253	82,025	8.14%
Sunnyvale ISD	YS	1,025,47															

2018/2019 Dallas Central Appraisal District Proposed Budget Allocation Analysis with Dallas County Schools included in Allocation

ENTITY and ENTITY CODE		2016 Grand Total Taxable Value 9/2016	2017 Grand Total Taxable Value 9/2017	Taxable Value Change	Taxable Value Percent Change	2016 Tax Rates	2017 Tax Rates	Tax Rate Change	Tax Rate Percent Change	2016 Levy	2017 Levy	Levy Change	Levy Percent Change	2017/2018 Budget Allocation	2018/2019 Proposed Budget Allocation	Budget Allocation Change	Budget Allocation Percent Change
SPECIAL DISTRICTS																	
Dallas County FCD #1	DD	404,971,153	420,199,855	15,228,702	3.76%	2.250000	2.000000	(0.250000)	(11.11%)	9,111,851	8,403,997	(707,854)	(7.77%)	39,585	36,477	(3,108)	(7.85%)
Dallas County URD	DM	3,676,388,303	3,884,276,979	207,888,676	5.65%	1.295000	1.249000	(0.046000)	(3.55%)	47,609,229	48,514,619	905,391	1.90%	206,830	210,573	3,743	1.81%
Denton Co. LID #1	NL	234,834,604	243,413,011	8,578,407	3.65%	0.184000	0.183000	(0.001000)	(0.54%)	432,096	445,446	13,350	3.09%	1,877	1,933	56	2.98%
Denton Co. RUD #1	NR	201,598,839	209,931,458	8,332,619	4.13%	0.000000	0.000000	0.000000	0.00%	0	0	0	0.00%	0	0	0	0.00%
Grand Prairie Metro URD	GU	22,219,593	19,633,843	(2,585,750)	(11.64%)	0.600000	0.600000	0.000000	0.00%	133,318	117,803	(15,515)	(11.64%)	579	511	(68)	(11.74%)
Irving FCD, Section I	IF	329,668,824	345,737,177	16,068,353	4.87%	0.453000	0.446000	(0.007000)	(1.55%)	1,493,400	1,541,988	48,588	3.25%	6,488	6,693	205	3.16%
Irving FCD, Section III	ID	1,835,986,565	1,952,759,646	116,773,081	6.36%	0.125000	0.125000	0.000000	0.00%	2,294,983	2,440,950	145,966	6.36%	9,970	10,595	625	6.27%
Lancaster MUD #1	LM	58,000,645	92,761,773	34,761,128	59.93%	1.060000	1.000000	(0.060000)	(5.66%)	614,807	927,618	312,811	50.88%	2,671	4,026	1,355	50.73%
Northwest Dallas Co FCD	NF	484,261,721	491,385,801	7,124,080	1.47%	0.300000	0.300000	0.000000	0.00%	1,452,785	1,474,157	21,372	1.47%	6,311	6,398	87	1.38%
Valwood Improvement Auth.	FF	1,876,916,432	2,002,514,031	125,597,599	6.69%	0.250000	0.220000	(0.030000)	(12.00%)	4,692,291	4,405,531	(286,760)	(6.11%)	20,385	19,122	(1,263)	(6.20%)

DALLAS CENTRAL APPRAISAL DISTRICT 2018 PRELIMINARY ESTIMATED REAPPRAISAL PLAN - As of January 2018 .

ENTITY	RESIDENTIAL			COMMERCIAL			BPP			TOTAL OF ALL DIVISIONS		
	ACCOUNTS REAPPRAISED	TOTAL NUMBER OF ACCOUNTS	PERCENT REAPPRAISED	ACCOUNTS REAPPRAISED	TOTAL NUMBER OF ACCOUNTS	PERCENT REAPPRAISED	ACCOUNTS REAPPRAISED	TOTAL NUMBER OF ACCOUNTS	PERCENT REAPPRAISED	ACCOUNTS REAPPRAISED	TOTAL NUMBER OF ACCOUNTS	PERCENT REAPPRAISED
CITIES												
Addison	1,865	2,382	78.30%	331	687	48.18%	2,972	2,972	100.00%	5,168	6,041	85.55%
Balch Springs	4,427	6,865	64.49%	347	969	35.81%	829	829	100.00%	5,603	8,663	64.68%
Carrollton	9,869	12,462	79.19%	939	1,777	52.84%	3,763	3,763	100.00%	14,571	18,002	80.94%
Cedar Hill	10,594	16,233	65.26%	367	1,224	29.98%	1,239	1,239	100.00%	12,200	18,696	65.25%
Cockrell Hill	804	924	87.01%	105	105	100.00%	165	165	100.00%	1,074	1,194	89.95%
Combine	210	337	62.31%	76	76	100.00%	17	17	100.00%	303	430	70.47%
Coppell	8,621	12,350	69.81%	499	1,077	46.33%	1,542	1,542	100.00%	10,662	14,969	71.23%
Dallas	169,241	292,162	57.93%	17,915	39,331	45.55%	48,217	48,217	100.00%	235,373	379,710	61.99%
Desoto	10,535	17,024	61.88%	4	1,282	0.31%	1,399	1,399	100.00%	11,938	19,705	60.58%
Duncanville	9,536	11,959	79.74%	270	1,050	25.71%	1,423	1,423	100.00%	11,229	14,432	77.81%
Farmers Branch	7,104	8,116	87.53%	580	1,256	46.18%	3,366	3,366	100.00%	11,050	12,738	86.75%
Ferris	0	0	0.00%	15	15	100.00%	8	8	100.00%	23	23	100.00%
Garland	52,600	64,778	81.20%	1,627	4,736	34.35%	5,915	5,915	100.00%	60,142	75,429	79.73%
Glenn Heights	1,827	3,631	50.32%	200	200	100.00%	95	95	100.00%	2,122	3,926	54.05%
Grand Prairie	25,157	35,983	69.91%	1,232	5,021	24.54%	3,045	3,045	100.00%	29,434	44,049	66.82%
Grapevine	0	0	0.00%	34	34	100.00%	83	83	100.00%	117	117	100.00%
Highland Park	1,900	3,447	55.12%	74	74	100.00%	358	358	100.00%	2,332	3,879	60.12%
Hutchins	902	1,379	65.41%	76	441	17.23%	356	356	100.00%	1,334	2,176	61.31%
Irving	27,921	45,871	60.87%	2,706	5,508	49.13%	8,383	8,383	100.00%	39,010	59,762	65.28%
Lancaster	8,230	12,809	64.25%	727	1,606	45.27%	889	889	100.00%	9,846	15,304	64.34%
Lewisville	199	300	66.33%	10	10	100.00%	16	16	100.00%	225	326	69.02%
Mesquite	29,226	38,225	76.46%	1,234	2,665	46.30%	3,236	3,236	100.00%	33,696	44,126	76.36%
Ovilla	26	163	15.95%	23	23	100.00%	8	8	100.00%	57	194	29.38%
Richardson	19,448	21,662	89.78%	770	1,605	47.98%	5,092	5,092	100.00%	25,310	28,359	89.25%
Rowlett	11,303	17,773	63.60%	813	1,065	76.34%	1,040	1,040	100.00%	13,156	19,878	66.18%
Sachse	3,579	5,668	63.14%	326	327	99.69%	306	306	100.00%	4,211	6,301	66.83%
Seagoville	2,747	5,173	53.10%	62	792	7.83%	468	468	100.00%	3,277	6,433	50.94%
Sunnyvale	1,390	2,534	54.85%	208	625	33.28%	437	437	100.00%	2,035	3,596	56.59%
University Park	4,625	6,940	66.64%	147	324	45.37%	731	731	100.00%	5,503	7,995	68.83%
Wilmer	748	1,597	46.84%	26	26	100.00%	192	192	100.00%	966	1,815	53.22%
Wylie	320	430	74.42%	19	19	100.00%	14	14	100.00%	353	463	76.24%
Total Cities	424,954	649,177	65.46%	31,762	73,950	42.95%	95,604	95,604	100.00%	552,320	818,731	67.46%
SCHOOLS												
Carrollton/Farmers Branch	18,877	23,865	79.10%	1,328	3,499	37.95%	6,372	6,372	100.00%	26,577	33,736	78.78%
Cedar Hill	10,882	16,893	64.42%	383	1,298	29.51%	1,227	1,227	100.00%	12,492	19,418	64.33%
Coppell	11,003	16,022	68.67%	716	1,532	46.74%	2,413	2,413	100.00%	14,132	19,967	70.78%
Dallas	151,198	269,435	56.12%	17,758	40,127	44.25%	47,818	47,818	100.00%	216,774	357,380	60.66%
Desoto	11,865	19,445	61.02%	221	1,128	19.59%	1,023	1,023	100.00%	13,109	21,596	60.70%
Duncanville	14,328	20,577	69.63%	597	2,084	28.65%	2,000	2,000	100.00%	16,925	24,661	68.63%
Ferris	0	116	0.00%	100	100	100.00%	14	14	100.00%	114	230	49.57%
Garland	63,466	84,132	75.44%	2,923	6,231	46.91%	6,856	6,856	100.00%	73,245	97,219	75.34%
Grand Prairie	25,006	34,512	72.46%	1,269	4,944	25.67%	3,099	3,099	100.00%	29,374	42,555	69.03%
Grapevine-Colleyville	0	0	0.00%	18	18	100.00%	168	168	100.00%	186	186	100.00%
Highland Park	6,291	10,789	58.31%	227	487	46.61%	1,759	1,759	100.00%	8,277	13,035	63.50%
Irving	20,721	36,969	56.05%	2,306	4,922	46.85%	5,959	5,959	100.00%	28,986	47,850	60.58%
Lancaster	9,045	13,151	68.78%	701	1,776	39.47%	917	917	100.00%	10,663	15,844	67.30%
Mesquite	33,646	47,443	70.92%	1,561	3,330	46.88%	3,657	3,657	100.00%	38,864	54,430	71.40%
Richardson	48,140	57,074	84.35%	1,496	3,402	43.97%	10,418	10,418	100.00%	60,054	70,894	84.71%
Sunnyvale	1,390	2,534	54.85%	208	639	32.55%	437	437	100.00%	2,035	3,610	56.37%
Total Schools	425,858	652,957	65.22%	31,812	75,517	42.13%	94,137	94,137	100.00%	551,807	822,611	67.08%

DALLAS CENTRAL APPRAISAL DISTRICT 2017 PRELIMINARY ESTIMATED REAPPRAISAL PLAN - As of January 2017

ENTITY	RESIDENTIAL			COMMERCIAL			BPP			TOTAL OF ALL DIVISIONS		
	ACCOUNTS REAPPRAISED	TOTAL NUMBER OF ACCOUNTS	PERCENT REAPPRAISED	ACCOUNTS REAPPRAISED	TOTAL NUMBER OF ACCOUNTS	PERCENT REAPPRAISED	ACCOUNTS REAPPRAISED	TOTAL NUMBER OF ACCOUNTS	PERCENT REAPPRAISED	ACCOUNTS REAPPRAISED	TOTAL NUMBER OF ACCOUNTS	PERCENT REAPPRAISED
CITIES												
Addison	1,194	2,358	50.64%	686	687	99.85%	3,037	3,037	100.00%	4,917	6,082	80.85%
Balch Springs	2,856	6,875	41.54%	623	964	64.63%	780	780	100.00%	4,259	8,619	49.41%
Carrollton	9,076	12,462	72.83%	1,406	1,778	79.08%	3,728	3,728	100.00%	14,210	17,968	79.09%
Cedar Hill	9,239	16,207	57.01%	698	1,216	57.40%	1,228	1,228	100.00%	11,165	18,651	59.86%
Cockrell Hill	926	926	100.00%	105	105	100.00%	168	168	100.00%	1,199	1,199	100.00%
Combine	209	334	62.57%	75	75	100.00%	13	13	100.00%	297	422	70.38%
Coppell	6,440	12,275	52.46%	672	1,077	62.40%	1,507	1,507	100.00%	8,619	14,859	58.01%
Dallas	155,742	292,124	53.31%	20,883	39,169	53.32%	48,653	48,653	100.00%	225,278	379,946	59.29%
Desoto	7,320	16,935	43.22%	591	1,285	45.99%	1,349	1,349	100.00%	9,260	19,569	47.32%
Duncanville	6,319	11,960	52.83%	737	1,048	70.32%	1,403	1,403	100.00%	8,459	14,411	58.70%
Farmers Branch	6,591	8,116	81.21%	610	1,244	49.04%	3,319	3,319	100.00%	10,520	12,679	82.97%
Ferris	0	0	0.00%	15	15	100.00%	7	7	100.00%	22	22	100.00%
Garland	40,066	64,789	61.84%	2,670	4,709	56.70%	5,839	5,839	100.00%	48,575	75,337	64.48%
Glenn Heights	2,249	3,489	64.46%	20	199	10.05%	87	87	100.00%	2,356	3,775	62.41%
Grand Prairie	24,716	35,977	68.70%	965	4,870	19.82%	2,977	2,977	100.00%	28,658	43,824	65.39%
Grapevine	0	0	0.00%	33	33	100.00%	75	75	100.00%	108	108	100.00%
Highland Park	812	3,447	23.56%	76	76	100.00%	374	374	100.00%	1,262	3,897	32.38%
Hutchins	525	1,379	38.07%	75	421	17.81%	329	329	100.00%	929	2,129	43.64%
Irving	23,126	45,364	50.98%	2,271	5,518	41.16%	8,313	8,313	100.00%	33,710	59,195	56.95%
Lancaster	6,066	12,713	47.71%	562	1,604	35.04%	869	869	100.00%	7,497	15,186	49.37%
Lewisville	186	300	62.00%	10	10	100.00%	17	17	100.00%	213	327	65.14%
Mesquite	31,132	38,221	81.45%	782	2,658	29.42%	3,187	3,187	100.00%	35,101	44,066	79.66%
Ovilla	0	162	0.00%	23	23	100.00%	9	9	100.00%	32	194	16.49%
Richardson	17,874	21,659	82.52%	1,070	1,596	67.04%	4,959	4,959	100.00%	23,903	28,214	84.72%
Rowlett	10,057	17,771	56.59%	372	1,037	35.87%	1,007	1,007	100.00%	11,436	19,815	57.71%
Sachse	3,209	5,592	57.39%	48	325	14.77%	298	298	100.00%	3,555	6,215	57.20%
Seagoville	1,443	5,160	27.97%	786	786	100.00%	447	447	100.00%	2,676	6,393	41.86%
Sunnyvale	1,365	2,467	55.33%	241	629	38.31%	452	452	100.00%	2,058	3,548	58.00%
University Park	1,362	6,940	19.63%	217	320	67.81%	762	762	100.00%	2,341	8,022	29.18%
Wilmer	548	1,544	35.49%	249	250	99.60%	183	183	100.00%	980	1,977	49.57%
Wylie	152	384	39.58%	18	18	100.00%	12	12	100.00%	182	414	43.96%
Total Cities	370,800	647,930	57.23%	37,589	73,745	50.97%	95,388	95,388	100.00%	503,777	817,063	61.66%
SCHOOLS												
Carrollton/Farmers Branch	17,516	23,833	73.49%	2,195	3,484	63.00%	6,293	6,293	100.00%	26,004	33,610	77.37%
Cedar Hill	10,205	16,865	60.51%	700	1,293	54.14%	1,218	1,218	100.00%	12,123	19,376	62.57%
Coppell	8,712	15,760	55.28%	943	1,541	61.19%	2,332	2,332	100.00%	11,987	19,633	61.06%
Dallas	132,682	269,435	49.24%	22,213	39,937	55.62%	48,425	48,425	100.00%	203,320	357,797	56.83%
Desoto	9,055	19,213	47.13%	369	1,129	32.68%	996	996	100.00%	10,420	21,338	48.83%
Duncanville	11,000	20,575	53.46%	862	2,089	41.26%	1,980	1,980	100.00%	13,842	24,644	56.17%
Ferris	0	116	0.00%	99	99	100.00%	17	17	100.00%	116	232	50.00%
Garland	48,678	83,995	57.95%	3,087	6,172	50.02%	6,762	6,762	100.00%	58,527	96,929	60.38%
Grand Prairie	23,979	34,523	69.46%	881	4,795	18.37%	3,018	3,018	100.00%	27,878	42,336	65.85%
Grapevine-Colleyville	0	0	0.00%	18	18	100.00%	155	155	100.00%	173	173	100.00%
Highland Park	2,330	10,789	21.60%	334	483	69.15%	1,839	1,839	100.00%	4,503	13,111	34.35%
Irving	17,196	36,665	46.90%	2,454	4,927	49.81%	5,900	5,900	100.00%	25,550	47,492	53.80%
Lancaster	6,546	13,059	50.13%	710	1,773	40.05%	881	881	100.00%	8,137	15,713	51.79%
Mesquite	34,783	47,379	73.41%	1,123	3,318	33.85%	3,592	3,592	100.00%	39,498	54,289	72.76%
Richardson	46,147	57,011	80.94%	2,303	3,388	67.98%	10,097	10,097	100.00%	58,547	70,496	83.05%
Sunnyvale	1,365	2,467	55.33%	253	642	39.41%	451	451	100.00%	2,069	3,560	58.12%
Total Schools	370,194	651,685	56.81%	38,544	75,088	51.33%	93,956	93,956	100.00%	502,694	820,729	61.25%

DALLAS CENTRAL APPRAISAL DISTRICT 2016 PRELIMINARY ESTIMATED REAPPRAISAL PLAN - As of January 2016 .

ENTITY	RESIDENTIAL			COMMERCIAL			BPP			TOTAL OF ALL DIVISIONS		
	ACCOUNTS REAPPRAISED	TOTAL NUMBER OF ACCOUNTS	PERCENT REAPPRAISED	ACCOUNTS REAPPRAISED	TOTAL NUMBER OF ACCOUNTS	PERCENT REAPPRAISED	ACCOUNTS REAPPRAISED	TOTAL NUMBER OF ACCOUNTS	PERCENT REAPPRAISED	ACCOUNTS REAPPRAISED	TOTAL NUMBER OF ACCOUNTS	PERCENT REAPPRAISED
CITIES												
Addison	1,716	2,358	72.77%	229	688	33.28%	3,049	3,049	100.00%	4,994	6,095	81.94%
Balch Springs	3,435	6,830	50.29%	317	952	33.30%	789	789	100.00%	4,541	8,571	52.98%
Carrollton	11,106	12,458	89.15%	576	1,782	32.32%	3,689	3,689	100.00%	15,371	17,929	85.73%
Cedar Hill	9,981	16,218	61.54%	319	1,201	26.56%	1,269	1,269	100.00%	11,569	18,688	61.91%
Cockrell Hill	511	929	55.01%	103	103	100.00%	182	182	100.00%	796	1,214	65.57%
Combine	0	331	0.00%	75	75	100.00%	17	17	100.00%	92	423	21.75%
Coppell	8,671	12,254	70.76%	319	1,070	29.81%	1,523	1,523	100.00%	10,513	14,847	70.81%
Dallas	186,607	291,741	63.96%	14,057	39,155	35.90%	48,701	48,701	100.00%	249,365	379,597	65.69%
Desoto	11,292	16,902	66.81%	691	1,285	53.77%	1,338	1,338	100.00%	13,321	19,525	68.23%
Duncanville	8,596	11,958	71.88%	246	1,050	23.43%	1,445	1,445	100.00%	10,287	14,453	71.18%
Farmers Branch	7,218	8,081	89.32%	614	1,240	49.52%	3,150	3,150	100.00%	10,982	12,471	88.06%
Ferris	0	0	0.00%	15	15	100.00%	7	7	100.00%	22	22	100.00%
Garland	53,742	64,519	83.30%	2,278	4,719	48.27%	5,766	5,766	100.00%	61,786	75,004	82.38%
Glenn Heights	1,344	3,465	38.79%	200	200	100.00%	89	89	100.00%	1,633	3,754	43.50%
Grand Prairie	25,876	35,920	72.04%	1,147	4,304	26.65%	2,992	2,992	100.00%	30,015	43,216	69.45%
Grapevine	0	0	0.00%	28	28	100.00%	74	74	100.00%	102	102	100.00%
Highland Park	2,636	3,407	77.37%	76	76	100.00%	375	375	100.00%	3,087	3,858	80.02%
Hutchins	119	1,378	8.64%	393	400	98.25%	297	297	100.00%	809	2,075	38.99%
Irving	26,858	44,867	59.86%	2,252	5,534	40.69%	8,343	8,343	100.00%	37,453	58,744	63.76%
Lancaster	8,596	12,718	67.59%	545	1,598	34.11%	845	845	100.00%	9,986	15,161	65.87%
Lewisville	186	300	62.00%	10	10	100.00%	17	17	100.00%	213	327	65.14%
Mesquite	31,767	38,175	83.21%	988	2,630	37.57%	3,231	3,231	100.00%	35,986	44,036	81.72%
Ovilla	0	162	0.00%	23	23	100.00%	10	10	100.00%	33	195	16.92%
Richardson	19,729	21,764	90.65%	354	1,599	22.14%	4,856	4,856	100.00%	24,939	28,219	88.38%
Rowlett	14,316	17,619	81.25%	384	1,028	37.35%	982	982	100.00%	15,682	19,629	79.89%
Sachse	4,397	5,447	80.72%	108	326	33.13%	283	283	100.00%	4,788	6,056	79.06%
Seagoville	2,037	5,034	40.46%	258	775	33.29%	458	458	100.00%	2,753	6,267	43.93%
Sunnyvale	1,543	2,419	63.79%	194	625	31.04%	435	435	100.00%	2,172	3,479	62.43%
University Park	6,400	6,934	92.30%	236	317	74.45%	793	793	100.00%	7,429	8,044	92.35%
Wilmer	543	1,534	35.40%	82	246	33.33%	165	165	100.00%	790	1,945	40.62%
Wylie	93	317	29.34%	14	14	100.00%	12	12	100.00%	119	343	34.69%
Total Cities	449,315	646,039	69.55%	27,131	73,068	37.13%	95,182	95,182	100.00%	571,628	814,289	70.20%
SCHOOLS												
Carrollton/Farmers Branch	20,912	23,621	88.53%	1,786	3,494	51.12%	6,198	6,198	100.00%	28,896	33,313	86.74%
Cedar Hill	10,521	16,879	62.33%	332	1,275	26.04%	1,256	1,256	100.00%	12,109	19,410	62.39%
Coppell	11,315	15,508	72.96%	617	1,487	41.49%	2,320	2,320	100.00%	14,252	19,315	73.79%
Dallas	163,877	268,970	60.93%	13,734	39,893	34.43%	48,241	48,241	100.00%	225,852	357,104	63.25%
Desoto	11,838	19,157	61.79%	544	1,127	48.27%	990	990	100.00%	13,372	21,274	62.86%
Duncanville	13,781	20,539	67.10%	865	2,103	41.13%	2,029	2,029	100.00%	16,675	24,671	67.59%
Ferris	0	115	0.00%	98	98	100.00%	15	15	100.00%	113	228	49.56%
Garland	67,898	83,334	81.48%	2,682	6,174	43.44%	6,655	6,655	100.00%	77,235	96,163	80.32%
Grand Prairie	25,729	34,526	74.52%	1,138	4,227	26.92%	3,039	3,039	100.00%	29,906	41,792	71.56%
Grapevine-Colleyville	0	0	0.00%	18	18	100.00%	157	157	100.00%	175	175	100.00%
Highland Park	9,038	10,744	84.12%	335	478	70.08%	1,919	1,919	100.00%	11,292	13,141	85.93%
Irving	18,723	36,510	51.28%	1,024	4,946	20.70%	5,921	5,921	100.00%	25,668	47,377	54.18%
Lancaster	9,231	13,066	70.65%	591	1,768	33.43%	833	833	100.00%	10,655	15,667	68.01%
Mesquite	35,707	47,087	75.83%	986	3,280	30.06%	3,629	3,629	100.00%	40,322	53,996	74.68%
Richardson	49,444	57,314	86.27%	981	3,395	28.90%	10,112	10,112	100.00%	60,537	70,821	85.48%
Sunnyvale	1,543	2,419	63.79%	195	638	30.56%	434	434	100.00%	2,172	3,491	62.22%
Total Schools	449,557	649,789	69.19%	25,926	74,401	34.85%	93,748	93,748	100.00%	569,231	817,938	69.59%