

Memorandum



CITY OF DALLAS

DATE 6 February 2015

TO The Honorable Members of the Transportation and Trinity River Project Committee:
Vonciel Jones Hill (Chair), Lee Kleinman (Vice Chair), Deputy Mayor Pro Tem Monica Alonzo,
Mayor Pro Tem Tennell Atkins, Sandy Greyson, and Sheffie Kadane

SUBJECT Community Wildfire Protection for the Trinity Forest

On Monday, 9 February 2015, you will be briefed on Community Wildfire Protection for the Trinity Forest. The briefing materials are attached for your review.

Please feel free to contact me if you need additional information.

A handwritten signature in blue ink that reads "Jill Jordan".

Jill A. Jordan, P.E.
Assistant City Manager

Attachment

c: Honorable Mayor and Members of the City Council
A.C. Gonzalez, City Manager
Warren M.S. Ernst, City Attorney
Craig D. Kinton, City Auditor
Rosa A. Rios, City Secretary
Daniel F. Solis, Administrative Judge
Ryan S. Evans, First Assistant City Manager

Eric D. Campbell, Assistant City Manager
Mark McDaniel, Assistant City Manager
Joey Zapata, Assistant City Manager
Jeanne Chipperfield, Chief Financial Officer
Sana Syed, Public Information Officer
Elsa Cantu, Assistant to the City Manager – Mayor & Council

Community Wildfire Protection for The Trinity Forest

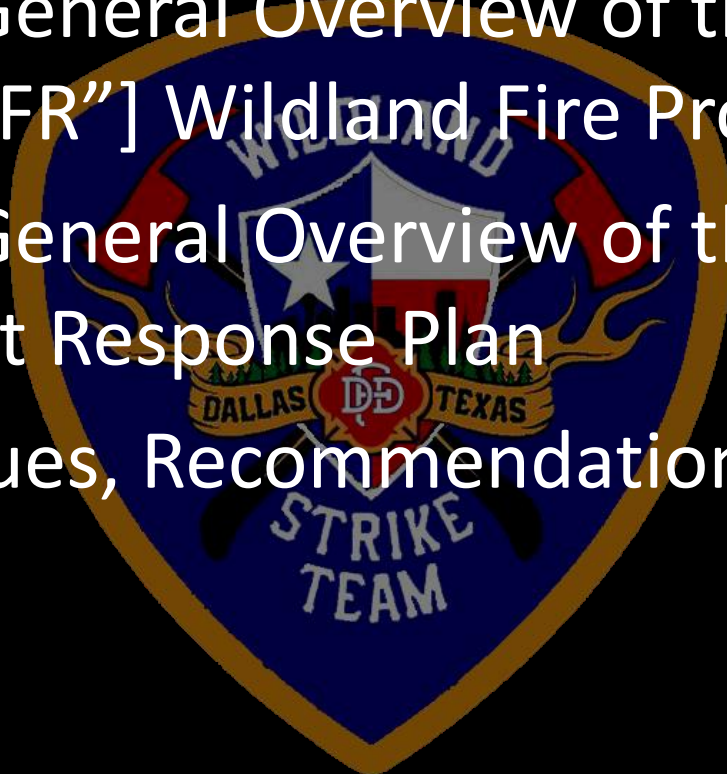


Transportation and Trinity River Project Committee
9 February 2015



Purpose

- Provide a General Overview of the Dallas Fire-Rescue [“DFR”] Wildland Fire Program
- Provide a General Overview of the Trinity River Forest Response Plan
- Discuss Issues, Recommendations, and Action Items



DFR Wildland Team

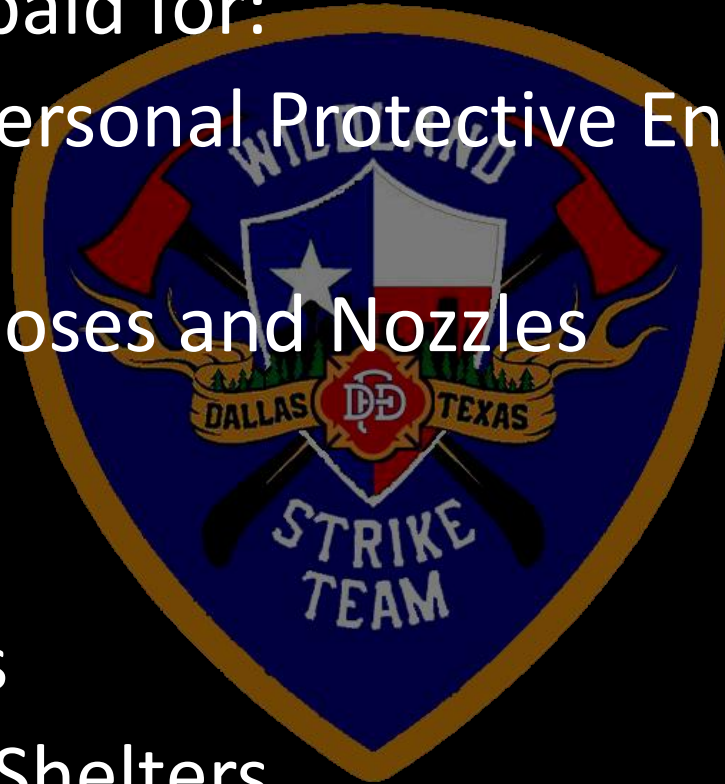
- Started in June 2010 with a \$200,000 Urban Areas Security Initiative [“UASI”] Grant
- A coordinator was selected to establish the program and to create Dallas’ first Wildland Strike Team as part of the Special Operations Division
 - To address Wildland Urban Interface [“WUI”] Issues
- Partnered with the Texas A&M Forest Service for training and technical support



DFR Wildland Team

Grant funds paid for:

- Wildland Personal Protective Ensemble [“PPE”]
- Wildland Hoses and Nozzles
- Hand Tools
- Radios
- Chain Saws
- Protective Shelters
- Initial Wildland Training Course



DFR Wildland Team Composition

90-MEMBER TEAM

6 - BATTALION CHIEFS

24 - COMPANY OFFICERS

60 - DRIVERS & FIRE RESCUE OFFICERS



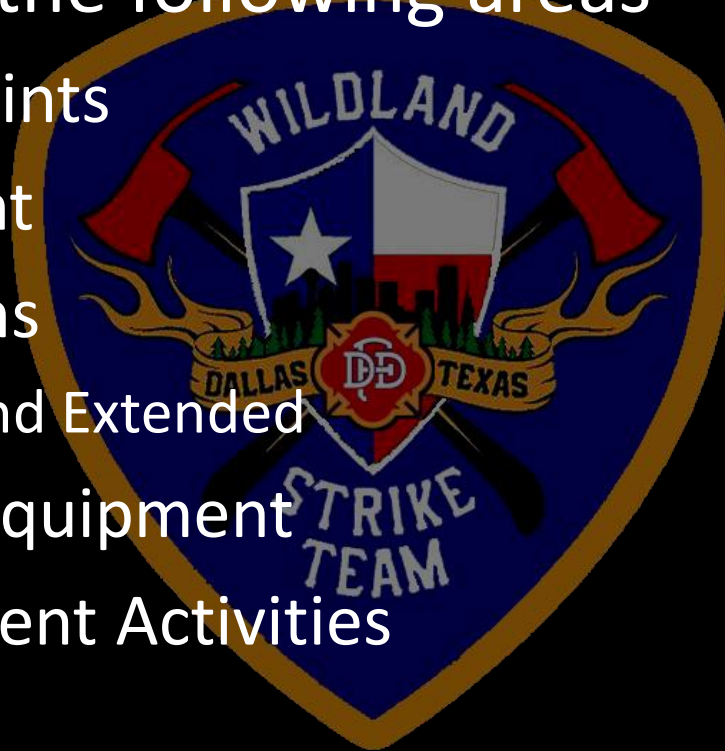
- * Cross Trained Members [Structural & Wildland] that are assigned to various stations and only respond as Wildland Firefighters during state calls for assistance

Great Trinity Forest [“GTF”]



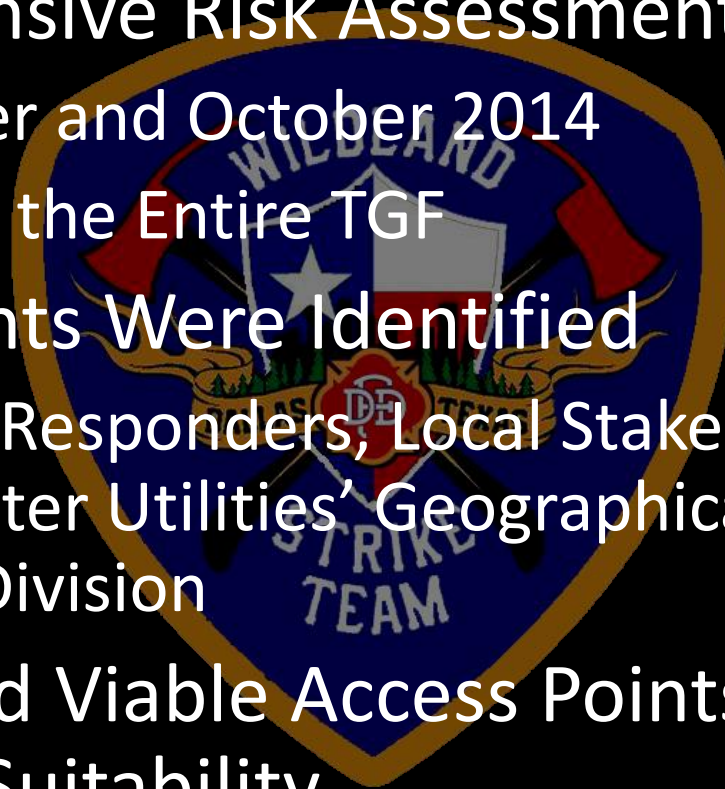
The Plan

- Addresses the following areas
 - Access Points
 - Equipment
 - Operations
 - Initial and Extended
 - Support Equipment
 - Post Incident Activities



Access Points

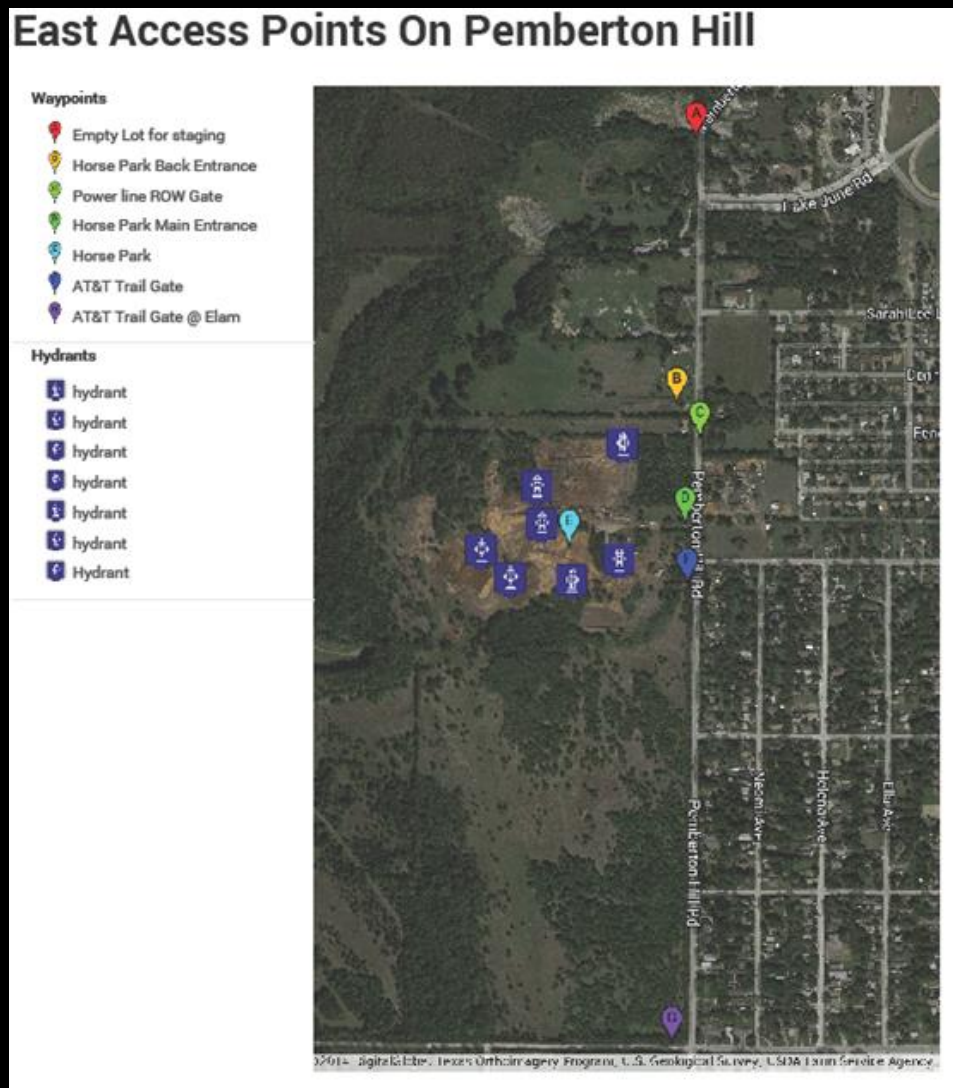
- Comprehensive Risk Assessment Completed
 - September and October 2014
 - Evaluated the Entire TGF
- Access Points Were Identified
 - Met with Responders, Local Stakeholders, and Dallas Water Utilities' Geographical Information Services Division
- Determined Viable Access Points and Evaluated Suitability
- Created Maps of Access Points



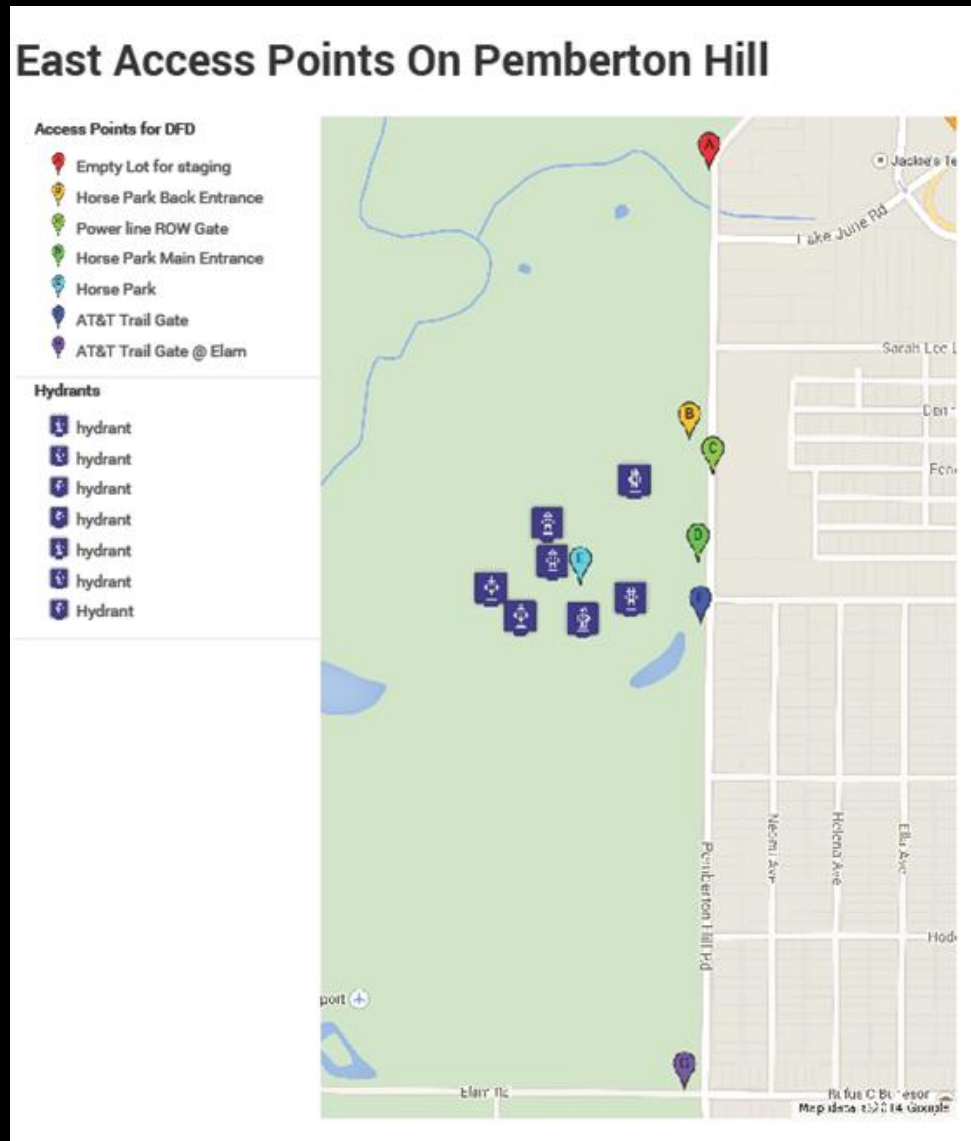
Examples of Access Points



Example of Access Point - Aerial View Map



Example of Access Point – Simple Map



Equipment

- Evaluated Current Equipment
 - Hand Tools, Personal Protective Equipment, Vehicles, hose size, etc.
- Took Delivery of New Equipment
 - Type 3 Boosters
 - New All Terrain Vehicles [“ATVs”]
- Future Equipment
 - Unpiloted Aerial Vehicles [“UAVs”]



Equipment Type 3 Booster



Equipment Type 6 Booster



Both Types of Boosters



All Terrain Vehicle



Hand Tools



Chain Of Wetlands Training Exercise

- At the end of September 2014, conducted a training exercise
 - Invited FOX4 News to film
- Lessons Learned
 - Type 3 Boosters Provide Flexibility
 - We can reduce our footprint in the GTF and other vital areas (Minimum Impact Suppression Tactics)
 - Ongoing Team Training is Vital
 - Coordinated Attack Requires Additional Staffing

Chain of Wetlands Training



Chain of Wetlands Training Pump and Roll Operations



Chain of Wetlands Training Pump and Roll Operations

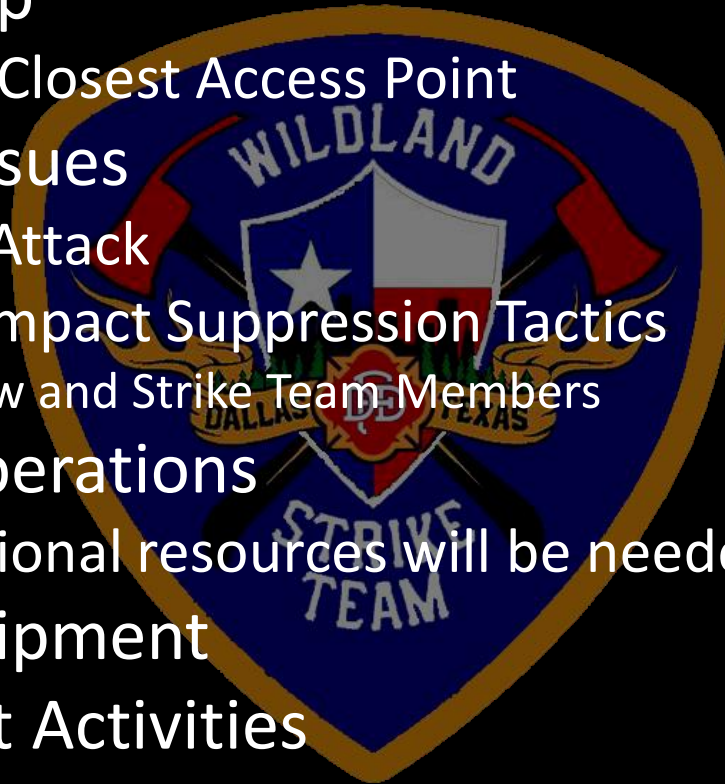


Chain of Wetlands Training Progressive Hose Lays



Operations

- Initial Size-Up
 - Determine Closest Access Point
- Life Safety Issues
 - Rescue vs. Attack
 - Minimum Impact Suppression Tactics
 - Hand Crew and Strike Team Members
- Extended Operations
 - What additional resources will be needed?
- Support Equipment
- Post Incident Activities
 - After Action Reports





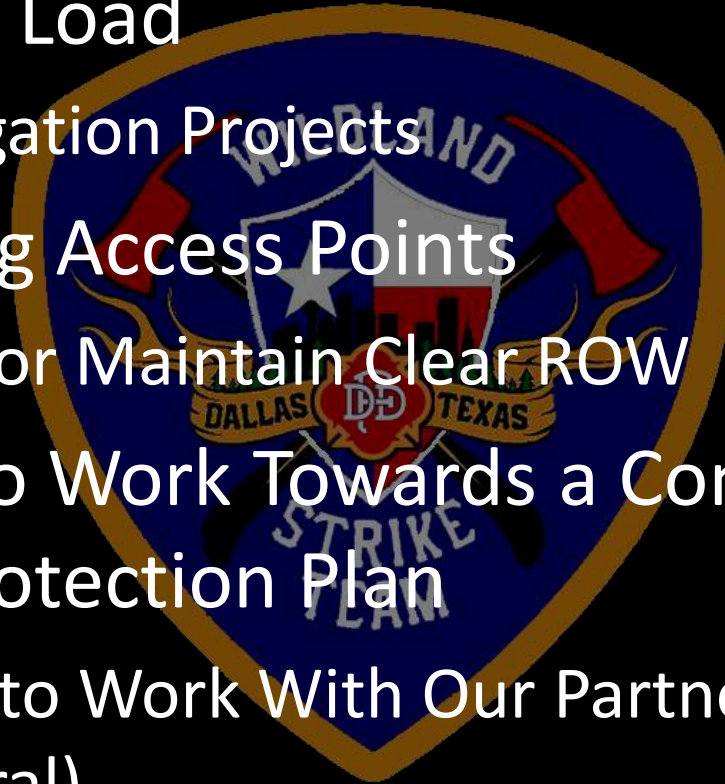
Hand Crew Members Elite Wildland Firefighters

Hand Crew Members Elite Wildland Firefighters



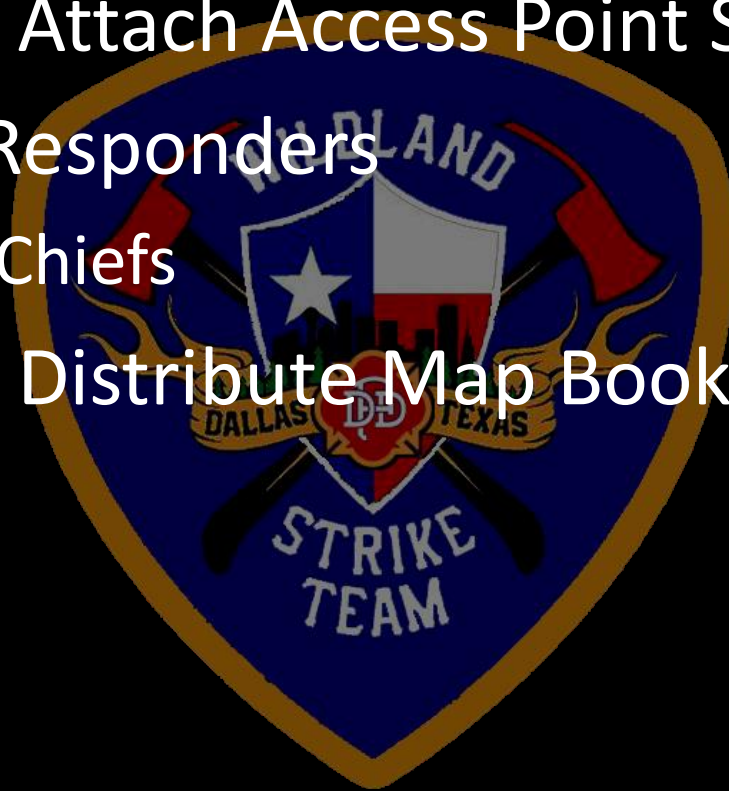
Issues & Recommendations

- Heavy Fuel Load
 - Fuel Mitigation Projects
- Maintaining Access Points
 - Have Oncor Maintain Clear ROW
- Continue to Work Towards a Community Wildfire Protection Plan
 - Continue to Work With Our Partners (Local, State, and Federal)



Action Items

- Create and Attach Access Point Signs
- Train First Responders
 - Battalion Chiefs
- Create and Distribute Map Books





Questions?

