

# Memorandum



CITY OF DALLAS

DATE 10 April 2015

TO Transportation and Trinity River Project Committee Members: Vonciel Jones Hill (Chair), Lee Kleinman (Vice Chair), Deputy Mayor Pro Tem Monica Alonzo, Mayor Pro Tem Tennell Atkins, Sandy Greyson, and Sheffie Kadane

SUBJECT 35Express Project

On Monday, 13 April 2015, you will be briefed on the 35Express Project. The briefing materials are attached for your review.

Should you have any questions or concerns, please feel free to contact me.

A handwritten signature in black ink, appearing to read 'Jill A. Jordan'.

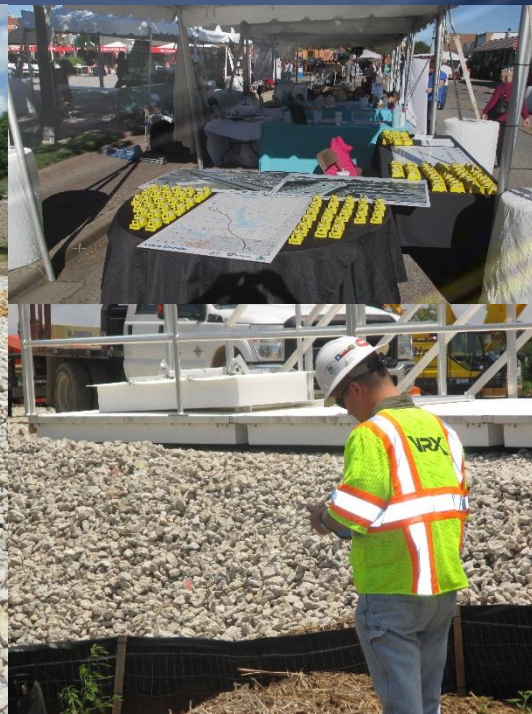
Jill A. Jordan, P.E.  
Assistant City Manager

c: Honorable Mayor and Members of the City Council  
A.C. Gonzalez, City Manager  
Warren M. S. Ernst, City Attorney  
Daniel F. Solis, Administrative Judge  
Rosa A. Rios, City Secretary  
Craig D. Kinton, City Auditor  
Ryan S. Evans, First Assistant City Manager  
Eric D. Campbell, Assistant City Manager  
Joey Zapata, Assistant City Manager  
Mark McDaniel, Assistant City Manager  
Jeanne Chipperfield, Chief Financial Officer  
Sana Syed, Public Information Officer  
Elsa Cantu, Assistant to the City Manager – Mayor and Council

# 35EXPRESS PROJECT

## TRANSPORTATION AND TRINITY RIVER PROJECT COMMITTEE

13 APRIL 2015



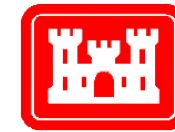
# 35EXPRESS PROJECT OVERVIEW

# DESIGN-BUILD TEAM





# PROJECT PARTNERS



US Army Corps  
of Engineers®

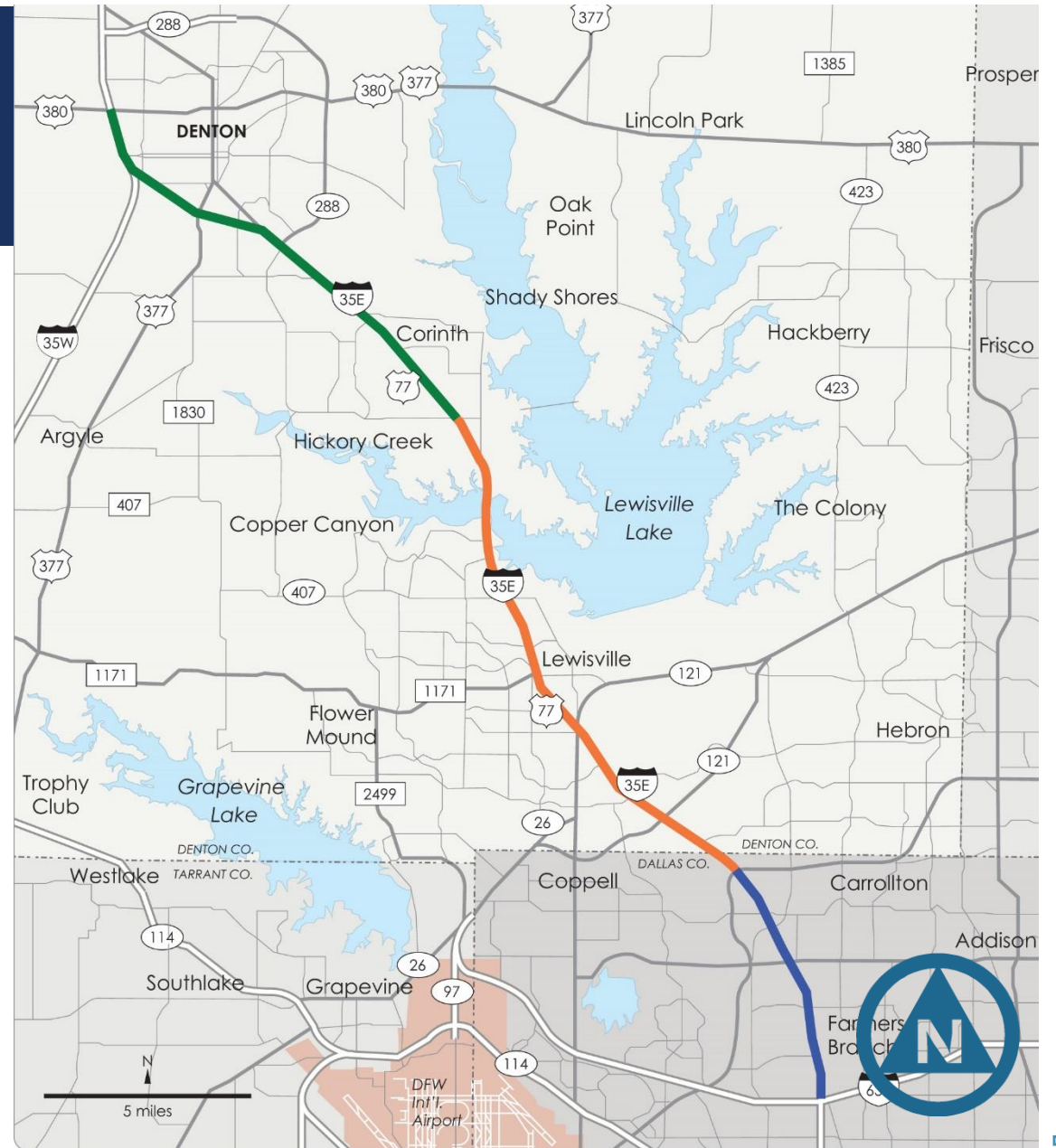


North Central Texas  
Council of Governments



# PROJECT OVERVIEW

- Approximately 30-mile project
- US 380 to I-635
- Ultimate construction cost: \$4.8 B
- Available funds: \$1.4 B (Phase I)
- Phase I began: Fall 2013
- AGL Constructors contracted to complete Phase I only.
- Estimated completion: Mid-2017



# PROJECT OVERVIEW

Improvements include:

- Additional general purpose lanes
- 18-mile reversible TEXpress toll (managed lane) system
- Rehabilitation, reconstruction or expansion of 75+ bridges
- Added connectivity to LBJ Freeway and the north side of the Sam Rayburn Tollway/I-35E intersection
- New southbound Lewisville Lake bridge, includes bike and pedestrian lanes
- Lengthening and widening ramps throughout the corridor
- Adding continuous frontage road lanes along the corridor

# MANAGED TOLL LANES

- Branded as TEXpress Lanes in the North Texas region
- Congestion management system with variable pricing
- Offers additional choice to motorists
- Lanes will be reversible
  - Open southbound for morning rush hour, northbound for afternoon rush hour
- Lanes are separated by barriers
- Twelve ["12"] access points
  - Six ["6"] northbound
  - Six ["6"] southbound
- Shoulders for emergencies





# FUNDING

- Local, state and federal resources
- More than \$600 million from Denton County Regional Toll Fund
- Phased approach to construction
  - AGL – Phase I
  - Phase 2 begins sometime after Phase I and is estimated at \$3.4 billion
    - A portion of funding will come from revenue generated from managed lanes



# SOUTH SEGMENT

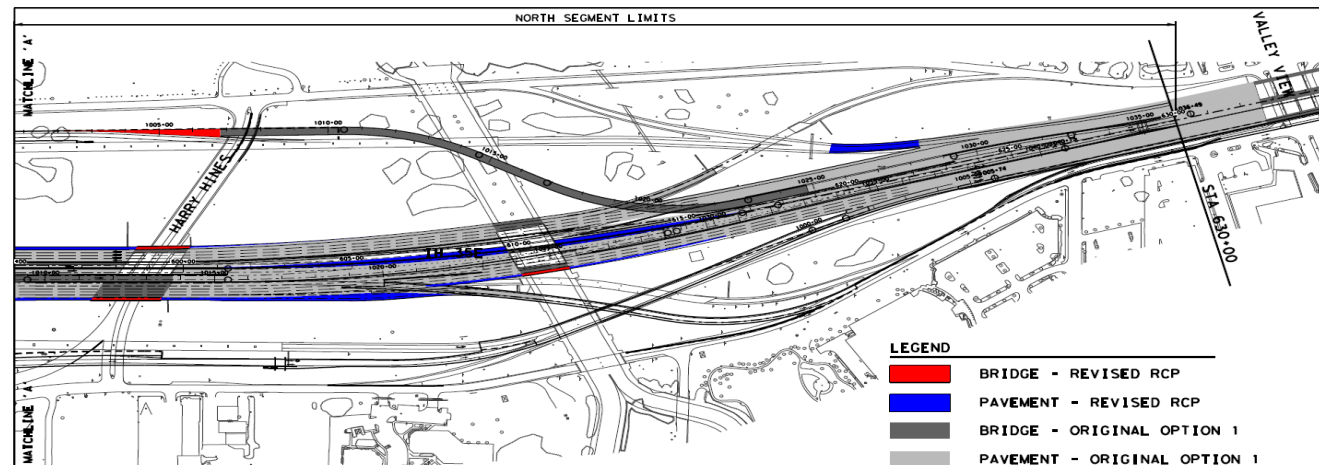
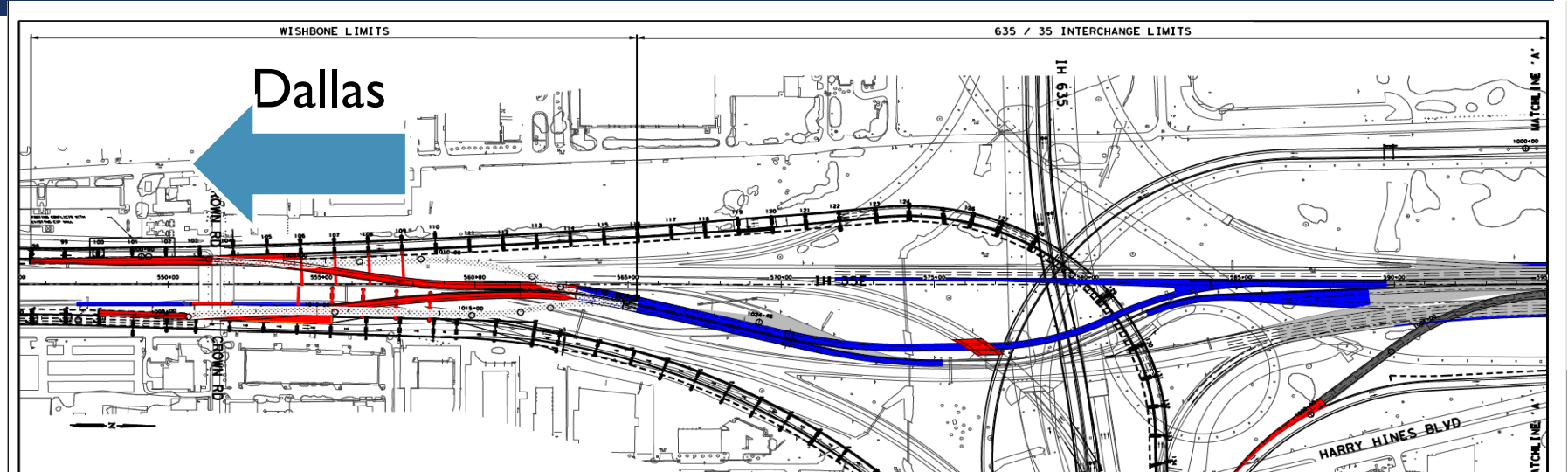
# SOUTH SEGMENT OVERVIEW

- “Wishbone” connection between 35Express and TEXpress managed lanes system
- Addition of reversible managed lane system
- Widening of bridges at
  - Valley View Lane
  - Valwood Parkway
  - Crosby Road
  - Whitlock Lane/Sandy Lake Road
- Reconstruction of Belt Line/35E interchange

# THE WISHBONE

# THE WISHBONE

- Connects the TEXpress Managed Toll Lane System to the 35Express Managed Toll Lane System
- Limits: Crown Road (near Royal Lane) to Valley View Lane
- Widening of lanes between Crown and Valley View





# CONSTRUCTION SEQUENCING

- Phase I (March 2015 – Late 2015)
  - Shift north and southbound traffic between I-635 and Valley View Lane to the inside and work on the outside of interstate
    - Restripe, set barrier during overnight closures 9 PM – 6 AM
    - Widen Harry Hines and Farmers Branch bridges
    - Shift traffic north on the westbound I-635 to southbound I-35E direct connector (mid-2015)
    - Place the drill shafts, columns and caps for the wishbone and direct connectors

# THE WISHBONE - SOUTH OF I-635



Harry Hines

I-635

I-35E



# DETOUR FOR NIGHTLY CLOSURES OF HARRY HINES





# CONSTRUCTION SEQUENCING

- Phase 2 (Late 2015 – Early 2016)
  - Northbound Valley View Lane exit ramp to close for approximately 3 months (late 2015)
    - Northbound and southbound traffic will exit at Valwood Parkway to access Valley View Lane
      - Northbound traffic will make a U-turn at Valwood Parkway and travel down the southbound frontage road to access Valley View Lane
      - Open the auxiliary lane from southbound I-35E to westbound I-635 (mid-2015)
      - Demolish a portion of the existing structures near the wishbone and direct connectors (early 2016)
      - Place straddle caps over I-35E – nightly interstate closures (early 2016)
      - Shift traffic south on the westbound I-635 to southbound I-35 direct connector ramp (early 2016)

# THE WISHBONE - I-635 TO VALLEY VIEW





# CONSTRUCTION SEQUENCING

- Phase 3 (Late 2015 – Mid-2017)
  - Shift mainlane traffic to the outside
  - Work on the inside of the interstate
    - Continue work on ramps and mainlanes
  - Place beams and deck over I-35E at the wishbone and direct connectors (2016)
  - Nightly mainlane closures
  - Open Wishbone (mid-2017)

I-635

I-35E

Wishbone











I-35E

Wishbone

# REACHING OUT



# REACHING OUT

- [www.35Express.org](http://www.35Express.org)
- eNewsletter
- Text Alerts
- Facebook/I35Express
- Twitter/35Express
- Project hotline 214-483-7777
- Project email address [info@35Express.org](mailto:info@35Express.org)



# REACHING OUT

ABOUT US TRAFFIC PROJECT INFORMATION NEWS & RESOURCES RELATED LINKS OPPORTUNITIES CONTACT US SELECT LANGUAGE

**About the 35Express**

The 35Express project extends approximately 30 miles, through eight cities and two counties, from US 380 in Denton County to I-635 in Dallas County. The Design-Build project is expected to relieve traffic congestion in one of the most heavily traveled corridors in the North Texas region.

[Learn more](#)

**Getting Around on the 35Express**

North Segment Middle Segment South Segment

**TRAFFIC ALERTS**

Northbound Interstate 35E Frontage Road Between Garden Ridge Boulevard and Highland Village Road to Convert to One Way

**Know Before You Go**


WATCH Live Traffic Feed


! Lane Closures

30-Day Outlook



# REACHING OUT



 **35EXPRESS**  
Travel & Transportation · Add A Category


Contact Us Share More

Timeline About Photos Reviews More

PEOPLE >

Status Photo / Video Offer, Event +

★★★★☆

 What have you been up to?



# REACHING OUT



TWEETS 1,121 FOLLOWING 214 FOLLOWERS 2,382 FAVORITES 69 LISTS 2

Edit profile

## 35EXPRESS

@35EXPRESS

The 35Express project extends approximately 30 miles, through eight cities and two counties, from US 380 in

Tweets Tweets & replies Photos & videos

 **35EXPRESS** @35EXPRESS · 8h  
Overnight Closures of Valley View Lane Exit Ramp [eepurl.com/bg8V0H](http://eepurl.com/bg8V0H)  
[#DFWTraffic](#)



# STAYING INFORMED

## Community Meetings

- Bi-annually (spring and fall)
- **Business Owner Information Meetings**
  - Quarterly



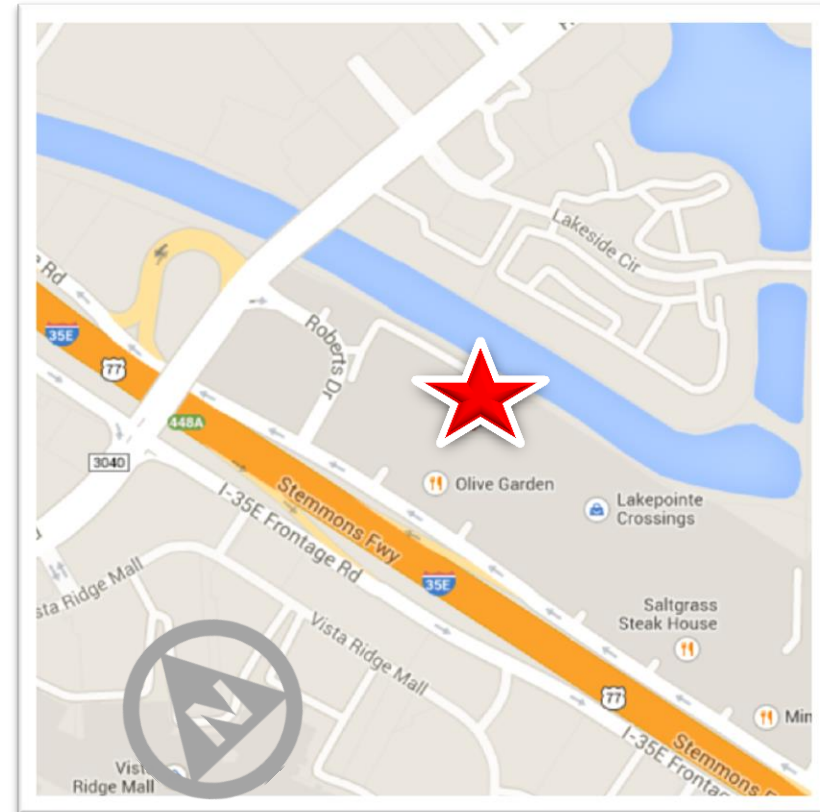
# COMING SOON...

- Business access page on the 35Express website
  - Detours specifically for areas that may be impacted by construction
  - List of relocated businesses on website (coming soon)



# PUBLIC INFORMATION OFFICE

2420 South Stemmons,  
Suite A, Lewisville





# THANK YOU!

