

Memorandum



CITY OF DALLAS

DATE April 10, 2015

TO Honorable Members of the Quality of Life & Environment Committee: Dwaine R. Caraway (Chair)
Sandy Greyson (Vice Chair), Adam Medrano, Rick Callahan, Carolyn R. Davis, Lee M. Kleinman

SUBJECT Downtown Parks Projects Update

On Monday, April 13, 2015 the Quality of Life & Environment Committee will be briefed on Downtown Parks Project Updates.

If you have any questions, please contact me at 214-670-4071.

A handwritten signature in cursive script, reading "Willis C. Winters".

Willis C. Winters, FAIA, Director
Park and Recreation Department

Attachment

- c: Honorable Mayor and Members of the City Council
A.C. Gonzalez, City Manager
Warren M.S. Ernst, City Attorney
Craig D. Kinton, City Auditor
Rosa A. Rios, City Secretary
Daniel F. Solis, Administrative Judge
Ryan S. Evans, First Assistant City Manager
Eric D. Campbell, Assistant City Manager
Jill A. Jordan, P.E., Assistant City Manager
Mark McDaniel, Assistant City Manager
Joey Zapata, Assistant City Manager
Jeanne Chipperfield, Chief Financial Officer
Sana Syed, Public Information Officer
Elsa Cantu, Assistant to the City Manager – Mayor & Council

DOWNTOWN PARKS PROJECTS UPDATE

Purpose of Briefing

- Summarize status of current Downtown Parks in Dallas
- Review the Downtown Parks Master Plan Update
- Provide updates on priority projects



Current Downtown Parks



Master Plans

- Downtown Park Master Plan (2004)
- Downtown Park Master Plan Update (2013)
 - Priorities
 - Carpenter Plaza
 - Harwood Park
 - Pacific Plaza
 - West End Plaza



Belo Garden



BELO GARDEN



Main Street Garden



MAIN STREET GARDEN



DALLAS DOWNTOWN PARKS MASTER PLAN UPDATE

HARGREAVES ASSOCIATES

Klyde Warren Park



KLYDE WARREN PARK



DALLAS DOWNTOWN PARKS MASTER PLAN UPDATE

HARGREAVES ASSOCIATES

Pacific Plaza

- Land acquisition
 - ▣ Purchased five tracts
 - ▣ Three tracts in partnership with Trust for Public Land (yellow)
 - ▣ 2.2 acres
- Aston Park
 - ▣ .5 acre
- Live Oak Street
 - ▣ .8 acre



Downtown Park Master Plan Update



CURRENT OPEN SPACE, GREEN SPACES, PARKS, PLAZAS

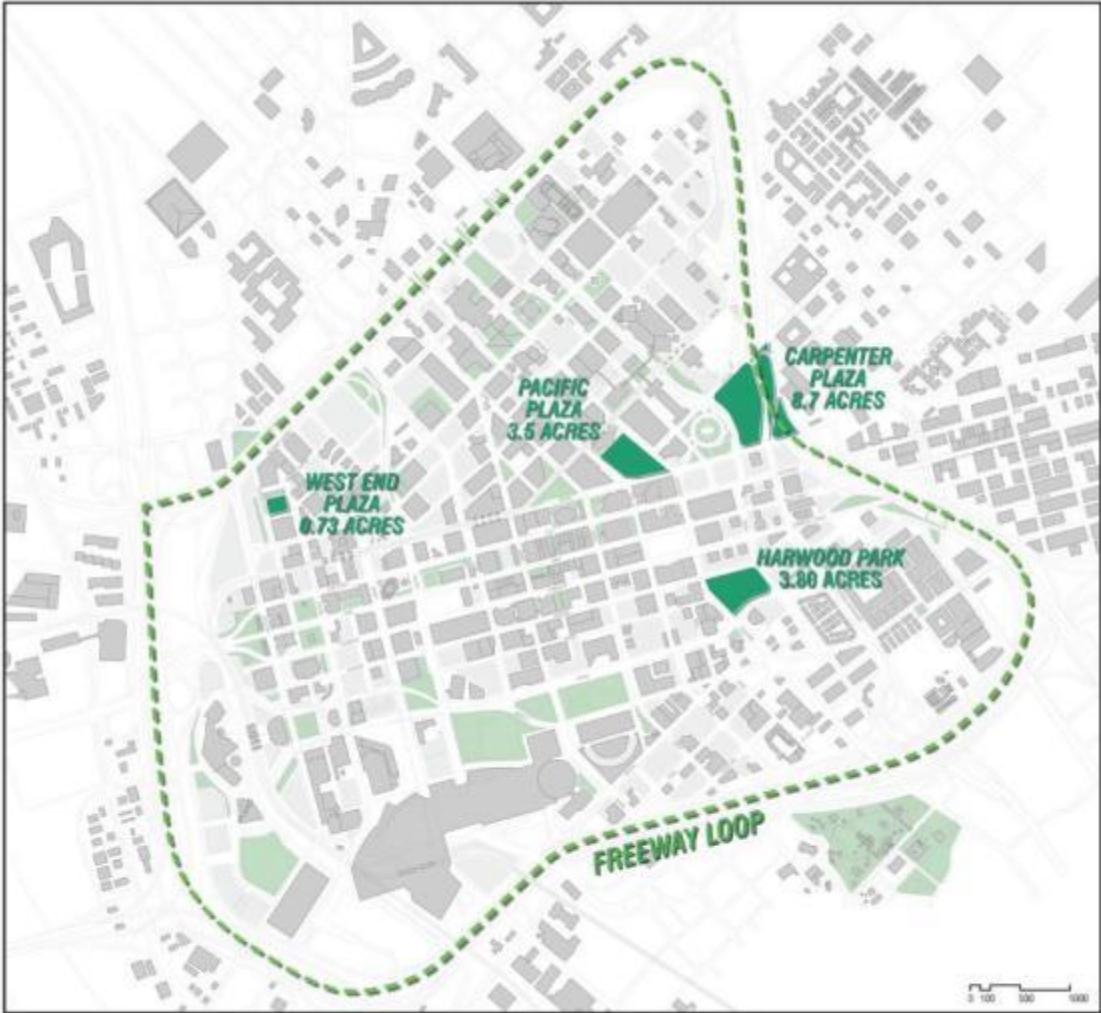


EXISTING PARKS = 50.8 ACRES
SMALL PUBLIC LANDSCAPE/
NEEDS IMPROVEMENT = 0.85 ACRES
TOTAL = 51.65 ACRES

CURRENT & PROPOSED GREEN SPACES, PARKS, PLAZAS



FUTURE PRIORITY PARKS



Priority Projects

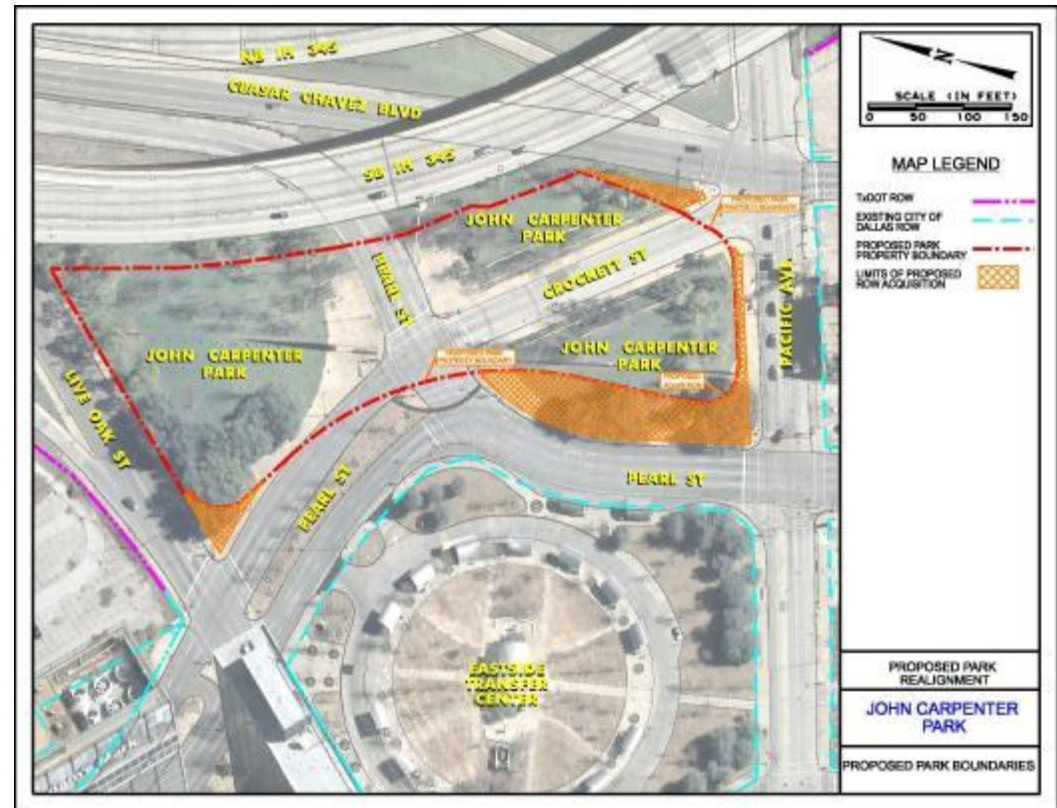
Pacific Plaza

- Status update given to Park Board on May 22, 2014 and August 7, 2014
 - ▣ Park Board expressed no interest in parking garage component for site
 - ▣ Adjacent property owner establishing fundraising group



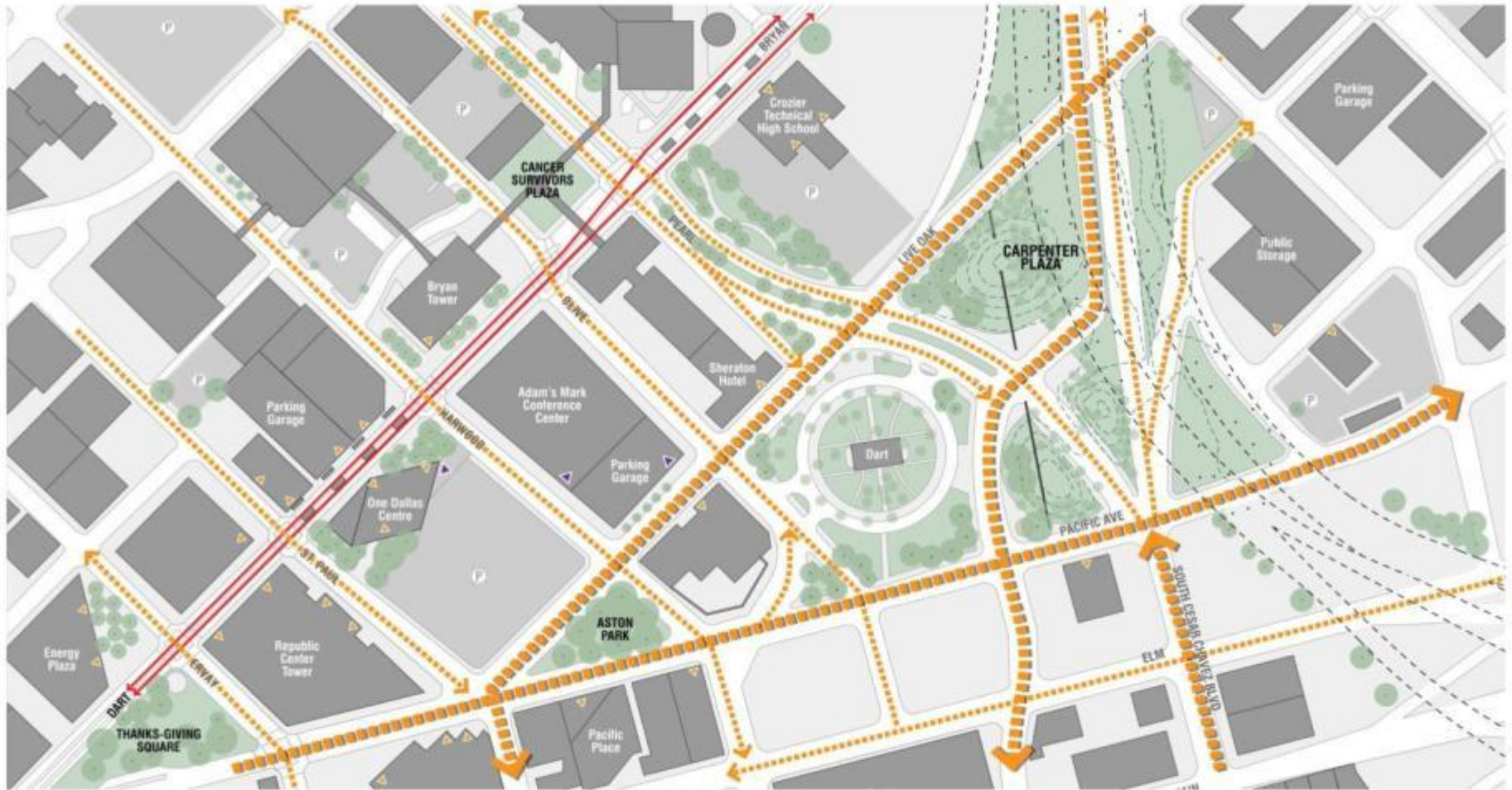
Carpenter Park

- Realignment of streets adjacent to Carpenter Park
- Park Board briefed on November 6, 2014 regarding schematic design
 - Schematic design funded privately
 - Reconfiguring of Portal Slice
- Next steps:
 - Design process



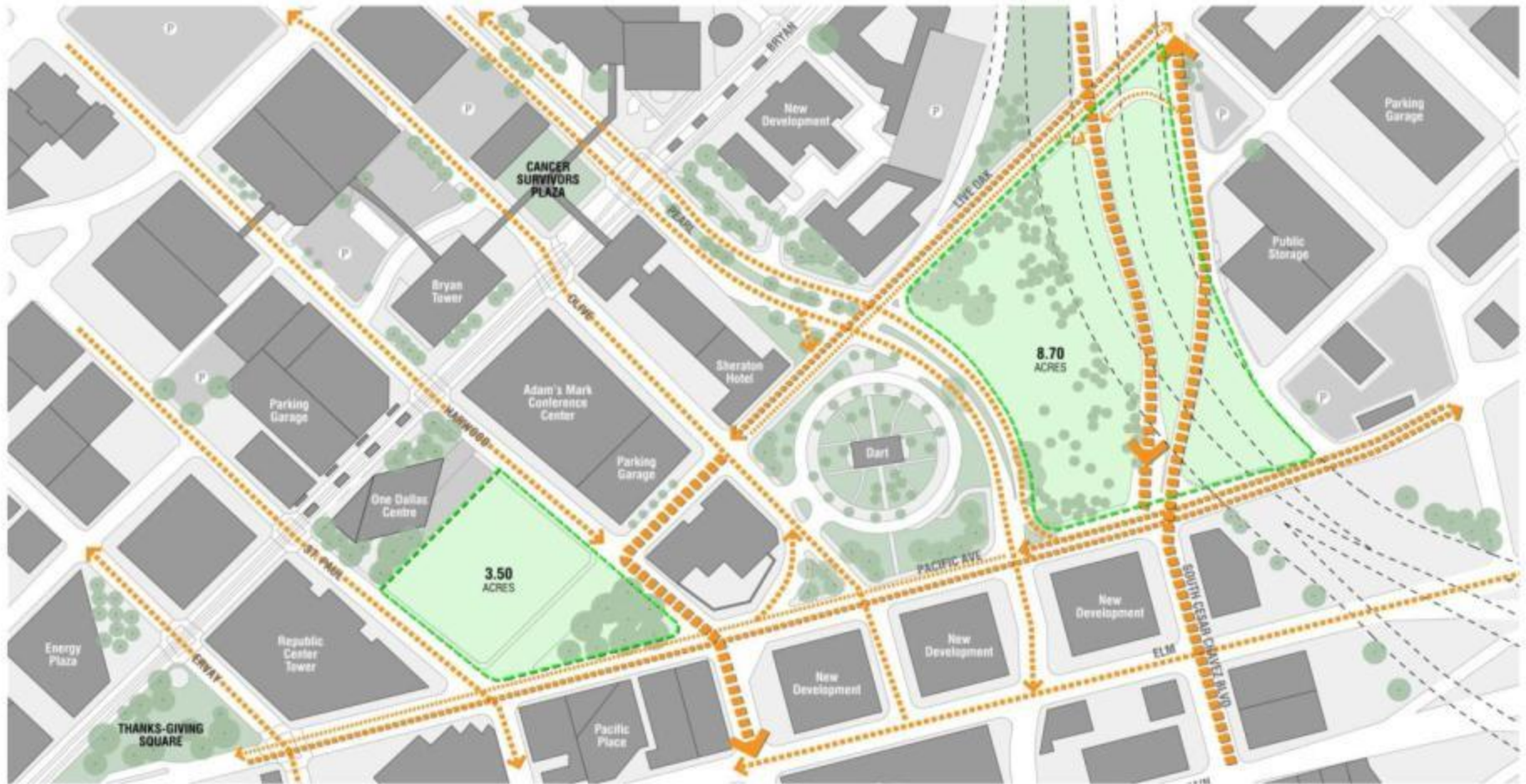
Carpenter Park

CARPENTER PLAZA & PACIFIC PLAZA - EXISTING CONDITION



Carpenter Park

CARPENTER PLAZA & PACIFIC PLAZA - PROPOSED ROAD ALIGNMENTS



Carpenter Park: Schematic Design



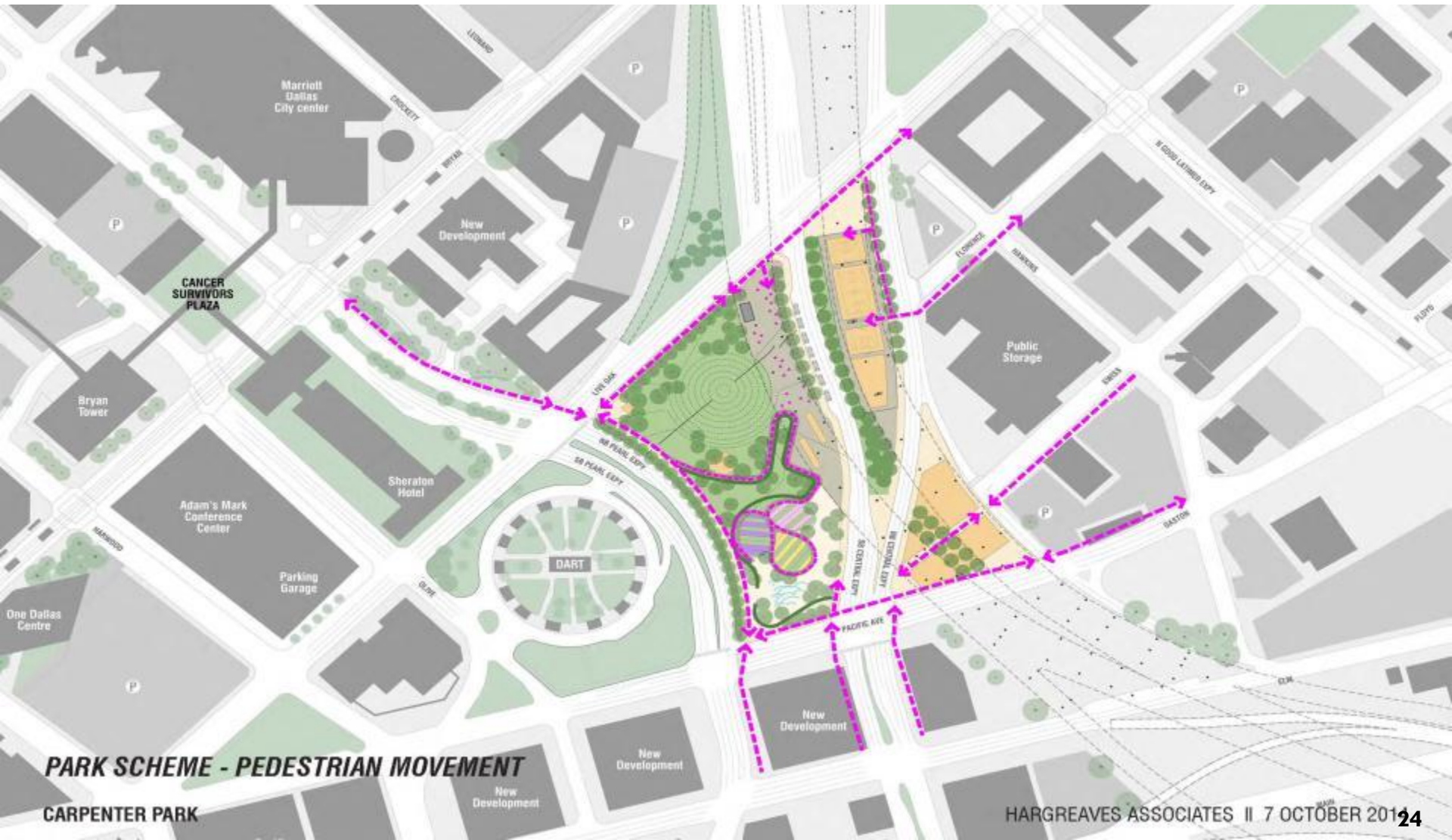
Carpenter Park: Public Art



Carpenter Park: Portal Slice



Carpenter Park



Harwood Park

- Much of park site purchased by the Belo Foundation
- Next Steps
 - ▣ Continue property acquisition
 - ▣ Park design
 - ▣ Aware of historic preservation issues with Harwood Historic District



Harwood Park

FARMERS MARKET DISTRICT - HARWOOD PARK CONCEPT

HARWOOD PARK, SIZE : 3.80 ACRES

- Park to serve the growing residential population in the Farmer's Market District
- Transformation of underutilized land into vital community resource
- Opportunity for Farmers Market cafe within existing building
- Urban gardens related to Farmers Market
- Release valve to take pressure off of Main Street Garden Park
- Views of adjacent historic buildings and downtown skyline



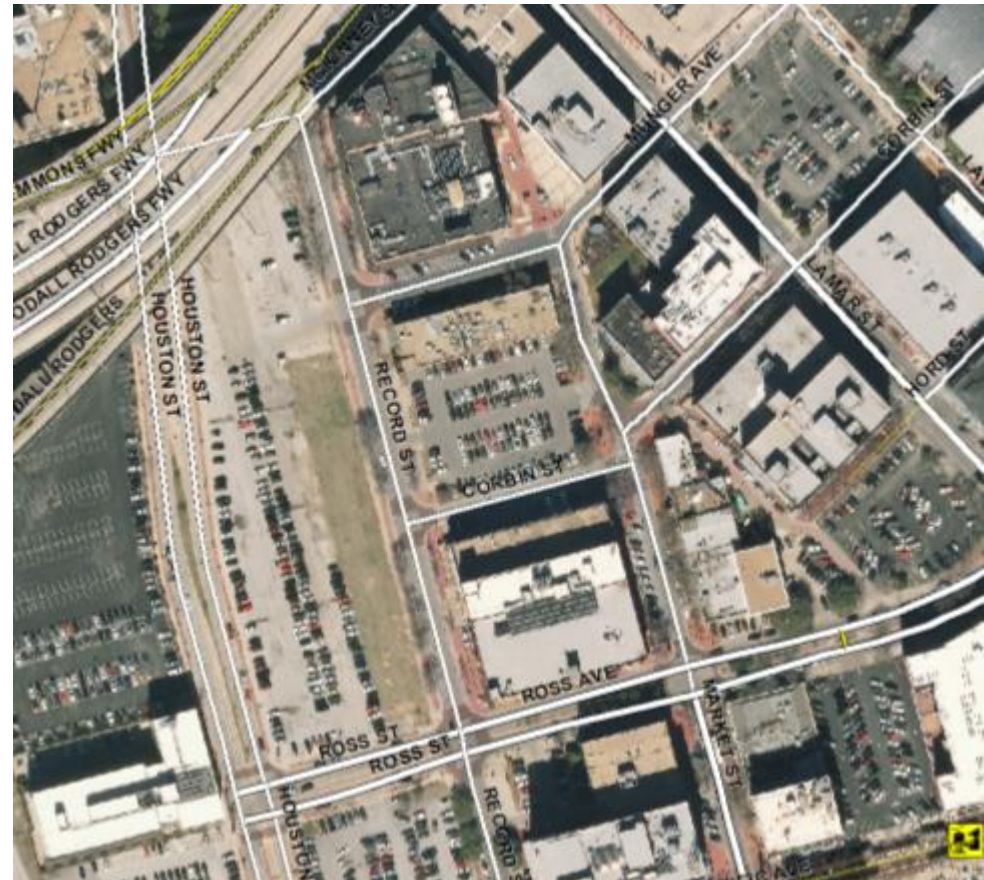
Harwood Park

FARMERS MARKET DISTRICT - HARWOOD PARK
VIEW FROM YOUNG STREET



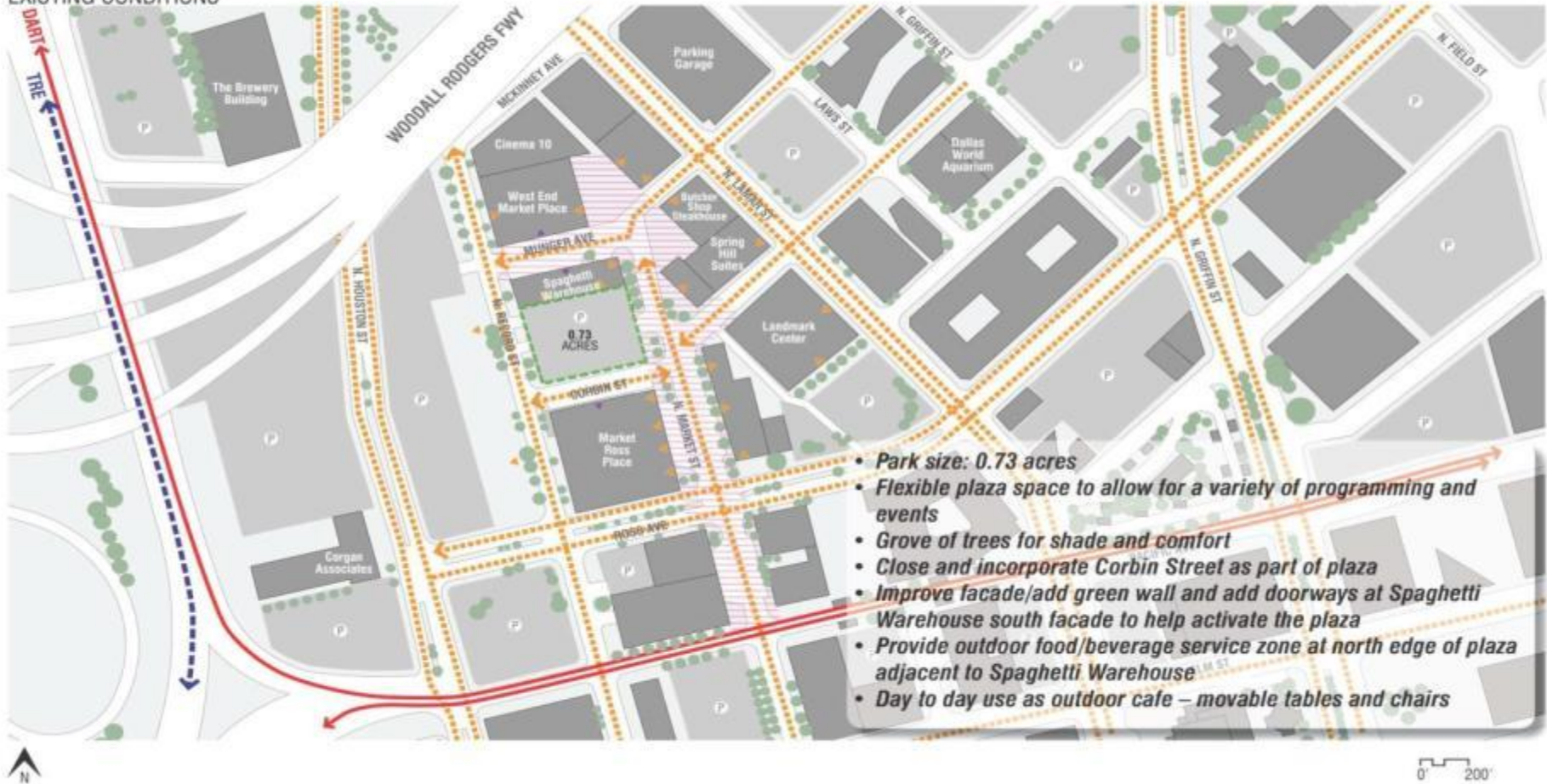
West End Plaza

- Reviewing property appraisal of site
- Key concern of West End Business Association
- Acquisition funding challenges



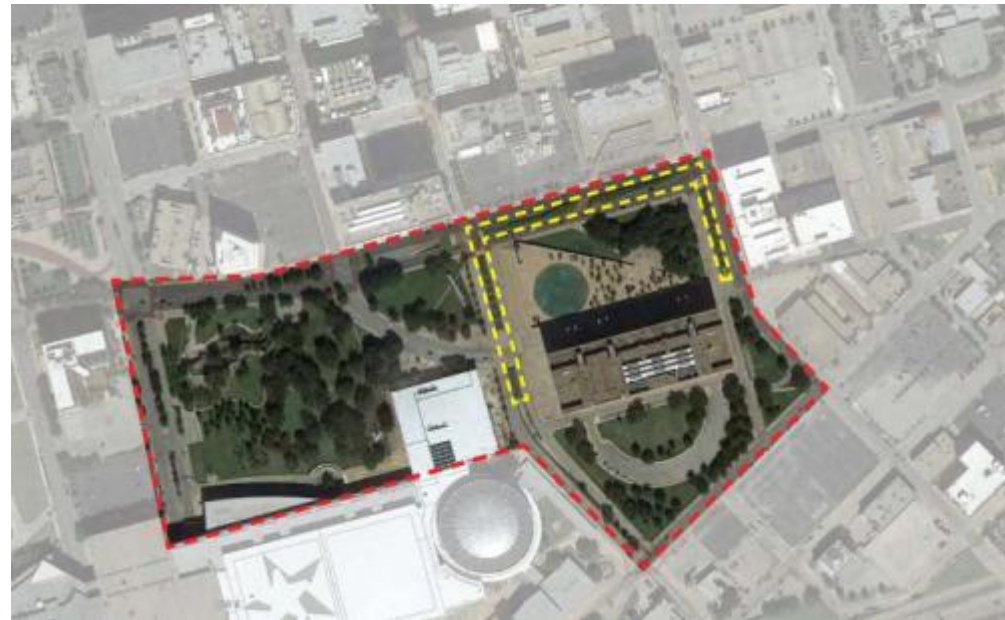
West End Plaza

WEST END PLAZA EXISTING CONDITIONS



City Hall Medians Project

- Part of larger City Hall landscaping project
- Project began March 2015
- Replacement of existing landscape with native plants
- Development of 500 Ervay project



City Hall Medians Project-Before



City Hall Medians Project: During



City Hall Medians Project: After



City Hall Medians Project



City Hall Medians Project



DOWNTOWN PARKS PROJECTS UPDATE