

# Memorandum



CITY OF DALLAS

DATE 11 October 2013

TO The Honorable Members of the Transportation and Trinity River Project Committee:  
Vonciel Jones Hill (Chair), Lee Kleinman (Vice Chair),  
Deputy Mayor Pro Tem Monica Alonzo, Mayor Pro Tem Tennell Atkins,  
Sandy Greyson, Sheffie Kadane

SUBJECT **LBJ Express Project Overview and Update**

On Monday, 14 October 2013, the Transportation and Trinity River Project Committee will be briefed on the LBJ Express Project Overview and Update. The material is attached for your review.

Please contact me if you have questions.

A handwritten signature in black ink, appearing to read 'Forest E. Turner'.

Forest E. Turner  
Assistant City Manager

Attachment

Cc: A.C. Gonzalez, Interim City Manager  
Warren M. S. Ernst, Interim City Attorney  
Judge Daniel F. Solis, Administrative Judge  
Rosa A. Rios, City Secretary  
Craig D. Kinton, City Auditor  
Ryan S. Evans, Interim First Assistant City Manager  
Jill A. Jordan, P.E., Assistant City Manager  
Joey Zapata, Assistant City Manager  
Charles M. Cato, Interim Assistant City Manager  
Theresa O'Donnell, Interim Assistant City Manager  
Jeanne Chipperfield, Chief Financial Officer  
Frank Libro, Public Information Officer  
Elsa Cantu, Assistant to the City Manager – Mayor and Council



 **LBJ**  
express

14 October 2013



# LBJ Through the Years



**2020: 500,000 cars/day**

# LBJ Express Project History

---

- **1987** LBJ Corridor Study Begins
- **1987–2004** Extensive Planning - 200+ Public Meetings
- **June 2004** LBJ Coalition Endorses Comprehensive Development Agreement (CDA) for LBJ
- **May 2005** Request for Quotes Issued
- **Dec 2005** Project Redefinition Began
- **Feb 2006** Regional Transportation Council (RTC) Endorses CDA for LBJ
- **Sept 2007** Dallas County Endorses CDA for LBJ
- **Sept 2007** Request for Proposals Issued
- **Feb 2009** Best Value Proposer Selection
- **May 2009** CDA Public Hearing
- **Aug 2009** Office of Attorney General & Legislative Budget Board Concurrence
- **Sept 2009** CDA Executed

# LBJ Express Project Team

## Project Owner



TxDOT owns and oversees every aspect of the project throughout the 52 year contract life

## DEVELOPER



LBJ Infrastructure Group LLC will maintain and operate the LBJ Express Project for the 52 year contract life

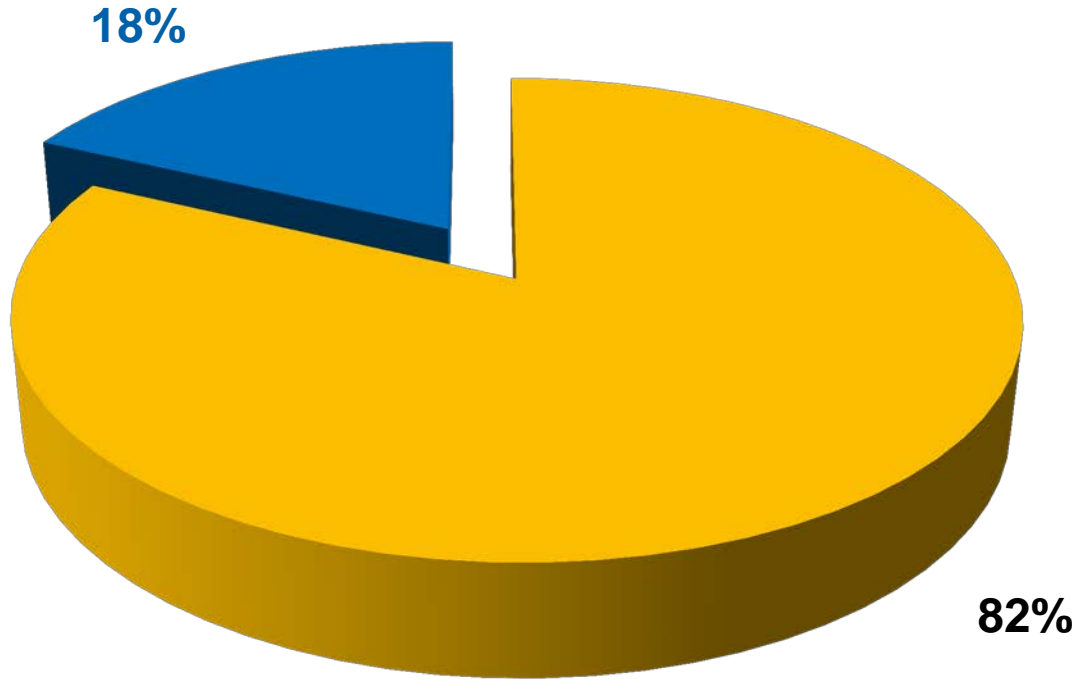
## CONTRACTOR



Trinity Infrastructure LLC has been designated by LBJ Infrastructure Group LLC to design and construct the LBJ Express Project

# How LBJ Express is Funded

- Private investment and TIFIA
- Public Subsidy

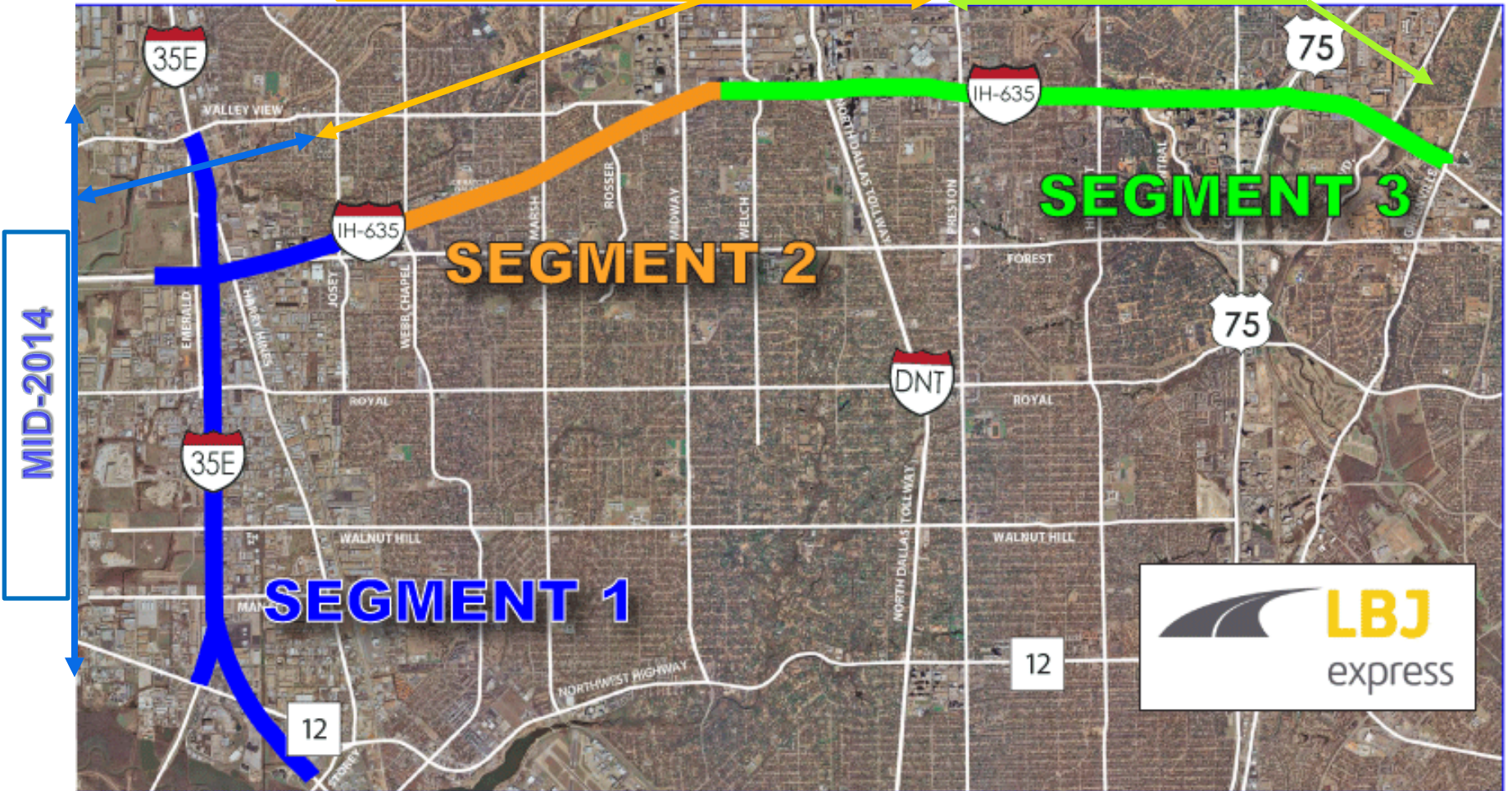


**TOTAL : 2.7 Billion \$**

# Construction Segments

DECEMBER 2015

DECEMBER 2013



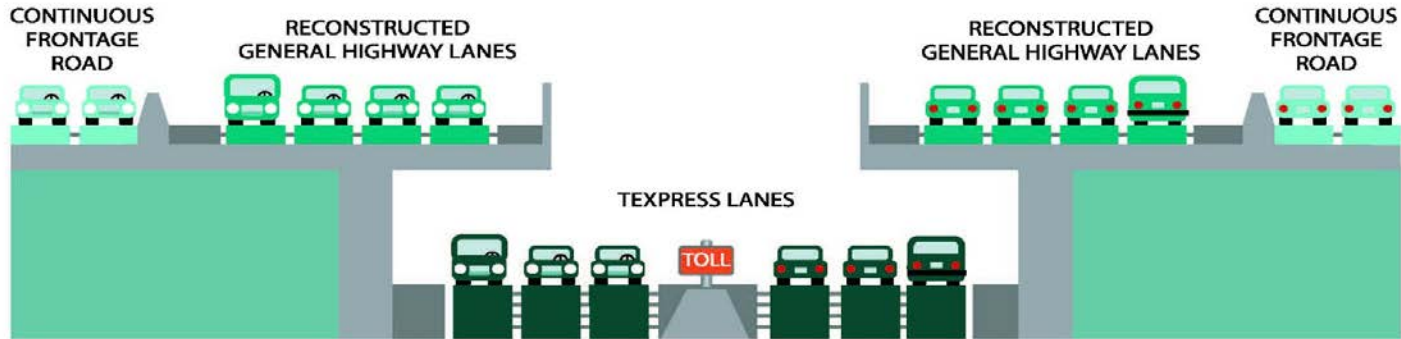
# LBJ Express Project Timeline

<b>Timeline</b>	
<b>Early 2011</b>	<b>Start of Construction / O&amp;M</b>
<b>December 2013</b>	<b>Completion of I-635: Preston Road to Greenville Ave.</b>
<b>Mid 2014</b>	<del><b>Completion of I-35E: Valwood Parkway to Loop 12</b></del> <b>Completion of I-635: Luna Road to Josey Lane</b>
<b>December 2015</b>	<b>Completion of I-635: Josey Lane to Montfort Drive</b>
<b>2016</b>	<b>Commencement of Service on Completed LBJ Express</b>
<b>2061</b>	<b>LBJ Express Returns to TxDOT</b>



# Final Plan - 2015

## I-635E: US 75 to I-35E



## I-35E: Loop 12 to North of I-635

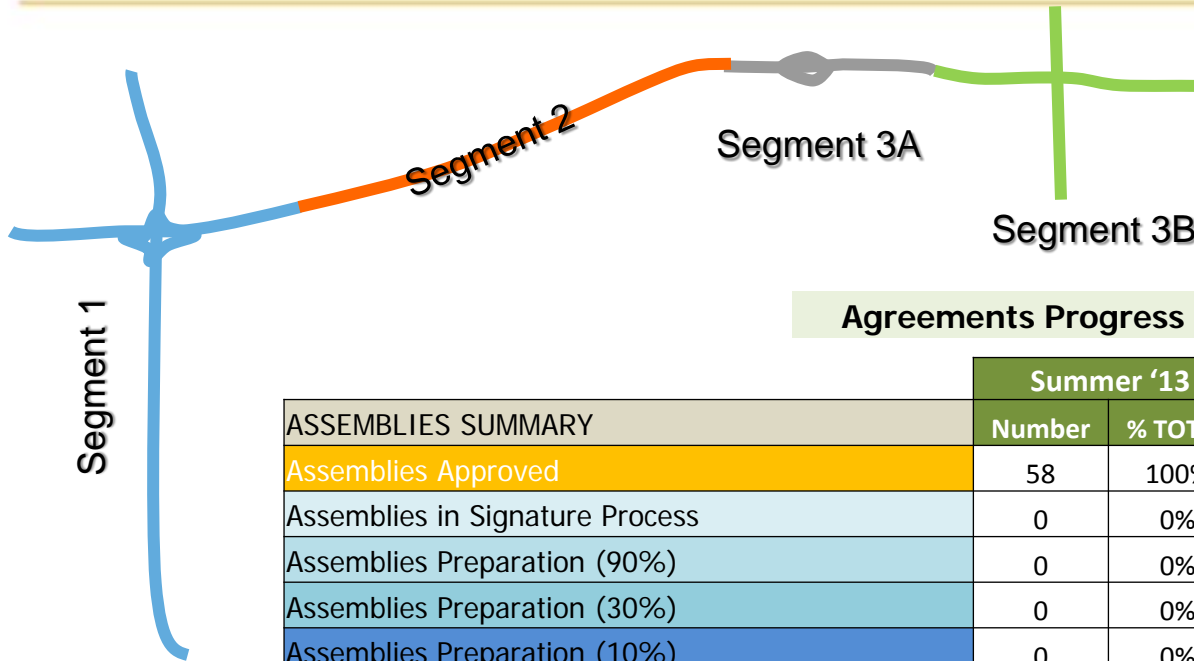


# Overall Construction Update

---

- As of Today, 100% of The Length of the Corridor is Under Construction
  - Design & Construction Overall Progress - 52%
  - # of Employees:
    - Approx. 2,000 People Working in the Corridor (Excluding Suppliers)
    - 82 Cranes & Approx. 500 Units Of Equipment
  - 1st Tier Contractors On Site:
    - 40 No. & Main Suppliers: 21
  - Procurement:
    - Materials (99% Awarded) & Subcontractors (95%)
  - Total Number Of Trinity Employees:
    - (417) / Self Performing Crews (Approx. 85 People)
  - Value Of Work Performed Over The Last 3 Months: Approx. \$166m
-

# Utility Segments

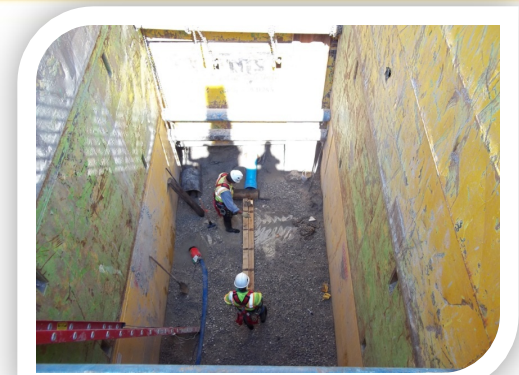


## Agreements Progress

ASSEMBLIES SUMMARY	Summer '13	
	Number	% TOTAL
Assemblies Approved	58	100%
Assemblies in Signature Process	0	0%
Assemblies Preparation (90%)	0	0%
Assemblies Preparation (30%)	0	0%
Assemblies Preparation (10%)	0	0%
Total Assemblies	58	100%

## Construction Progress

Utility Type	Segment 1	Segment 2	Segment 3A	Segment 3B
	Aug-13	Aug-13	Aug-13	Aug-13
Electric	99%	100%	99%	100%
Gas	99%	99%	99%	100%
Telecoms	98%	99%	99%	100%
Water & Wastewater	98%	100%	99%	99%



# Utility Complexity

- 500,000+ linear feet of utilities to move
- 350+ utility conflicts
- 2 municipalities
- 14 communications companies
- Electric transmission and delivery lines
- Water and wastewater lines
- Natural gas transmission and delivery lines
- 2 rail road crossings



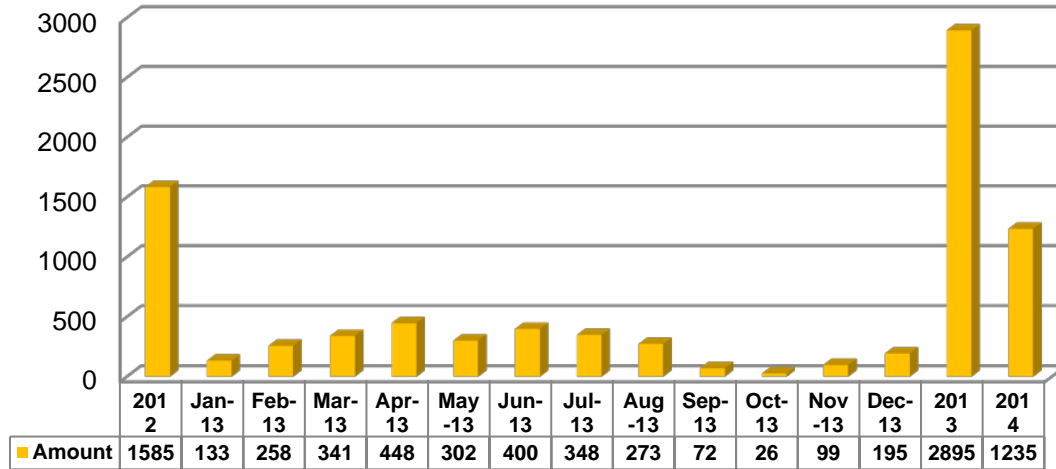
# DBE Progress

	DBE Commitment Dollars	Number of DBE Firms	Number of DBE Firms contracting directly w/ Trinity	% of Goal Achieved
Design/Professional Services	\$15,763,635.62	50	16	112.14%
Current Construction	\$156,110,060.26	153	50	95.25%
Total Committed to Date (Design & Construction):	\$171,873,695.88	203	66	96.58%

**LBJ Project DBE Goal Amount: \$177,943,654**

# Concrete Beams & Panels

## Beams Installation Progress



	Estimated Quantities of Production	
	Beams	PCPs
	#	Sf
Segment 1	2,759	1,600,000
Segment 2	1,954	900,000
Segment 3	1,002	600,000
All	5,715	3,100,000

<b>Item</b>	<b>Total</b>	<b>Unit</b>
Structures	6.4 Million	Sq Ft
Retaining Walls	2.2 Million	Sq Ft
Drilled Shaft Foundation	0.4 Million	Ft
Excavation	8.3 Million	CY
Embankment	0.6 Million	CY
Asphalt Pavement	150,000	Ton
Concrete Pavement	36,000	CY
Drainage Box Culvert	200,000	Ft
Drainage Pipes	200,000	Ft

NOTE: This list is a provisional list of structures to be updated as the design progresses.

# Construction Stats



**+1300** People  
working today

**+13** mile long  
infrastructure



**+300** pieces equipment & **+50** cranes



Aprox.  
**250,000**  
cars  
everyday

2-3 acc.  
everyday



**+200** Trucks  
today &  
close to **400**  
end of year



7-8 incidents a day



# Construction Stats



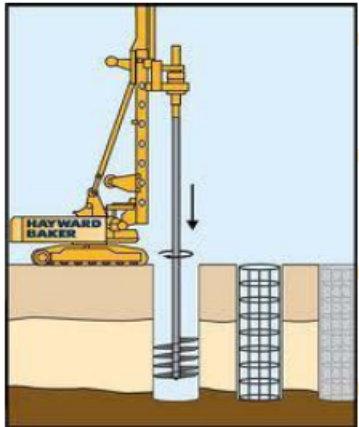
- **165** miles Traffic lanes

- **800** existing facilities in conflict



- Pavement (concrete & asphalt): **280** football fields.

- Deck surface in bridges: approx. **80** football fields



- Length of beams: Dallas-Austin

- Area of walls: L (=40 miles) x h (=16 feet)



- Length Drill shafts: Austin – San Antonio

- Length of nails : almost N to S of G.Britain

- Iron bar: Weight of **100 M** lbs

- Monthly vlaue of Works: \$40MM-50MM





# Segment 1 Construction



## PROGRESS TO DATE

ACTIVITY	% TO DATE
ROADWAY DEMO	75
TEMP WORK	40
TRAFFIC MANAGEMENT	80
EARTHWORK	58
DRAINAGE	87
STRUCTURES	77
ILUMINATION	56



**IH 35/635 INTERCHANGE**



**STEEL CAPS NB IH 35 MANANA EXIT**



**IH 635 LOOKING WEST FROM ANAHEIM RD.**

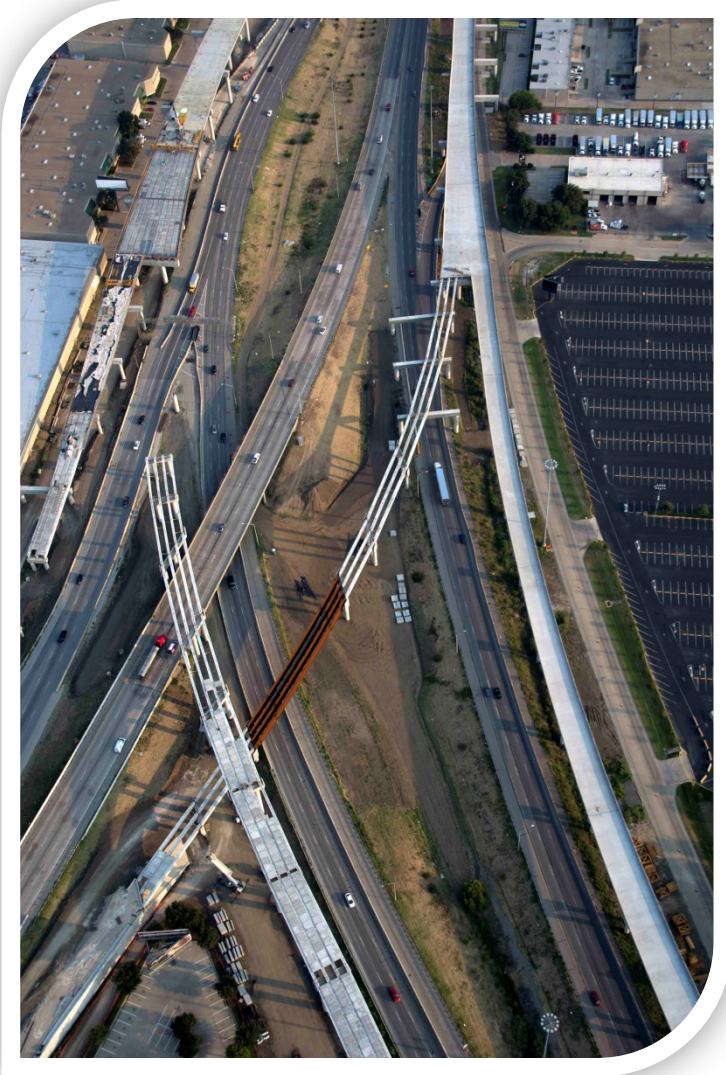


**IH 635 WB FRONTAGE BETWEEN DENTON AND HARRY HINES**

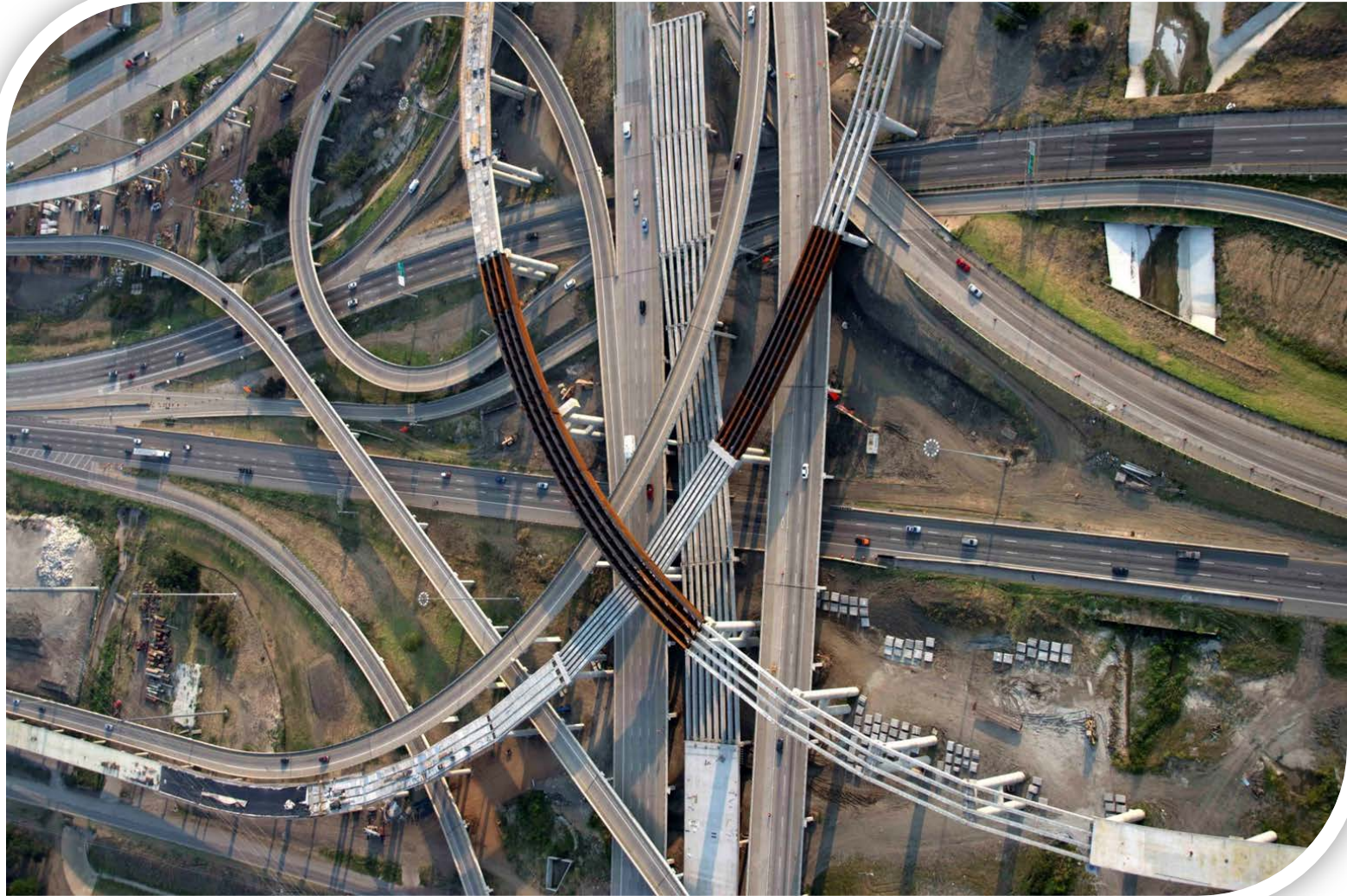


**BRIDGE 7C AND MSE WALL 4 SB LOOP 12**

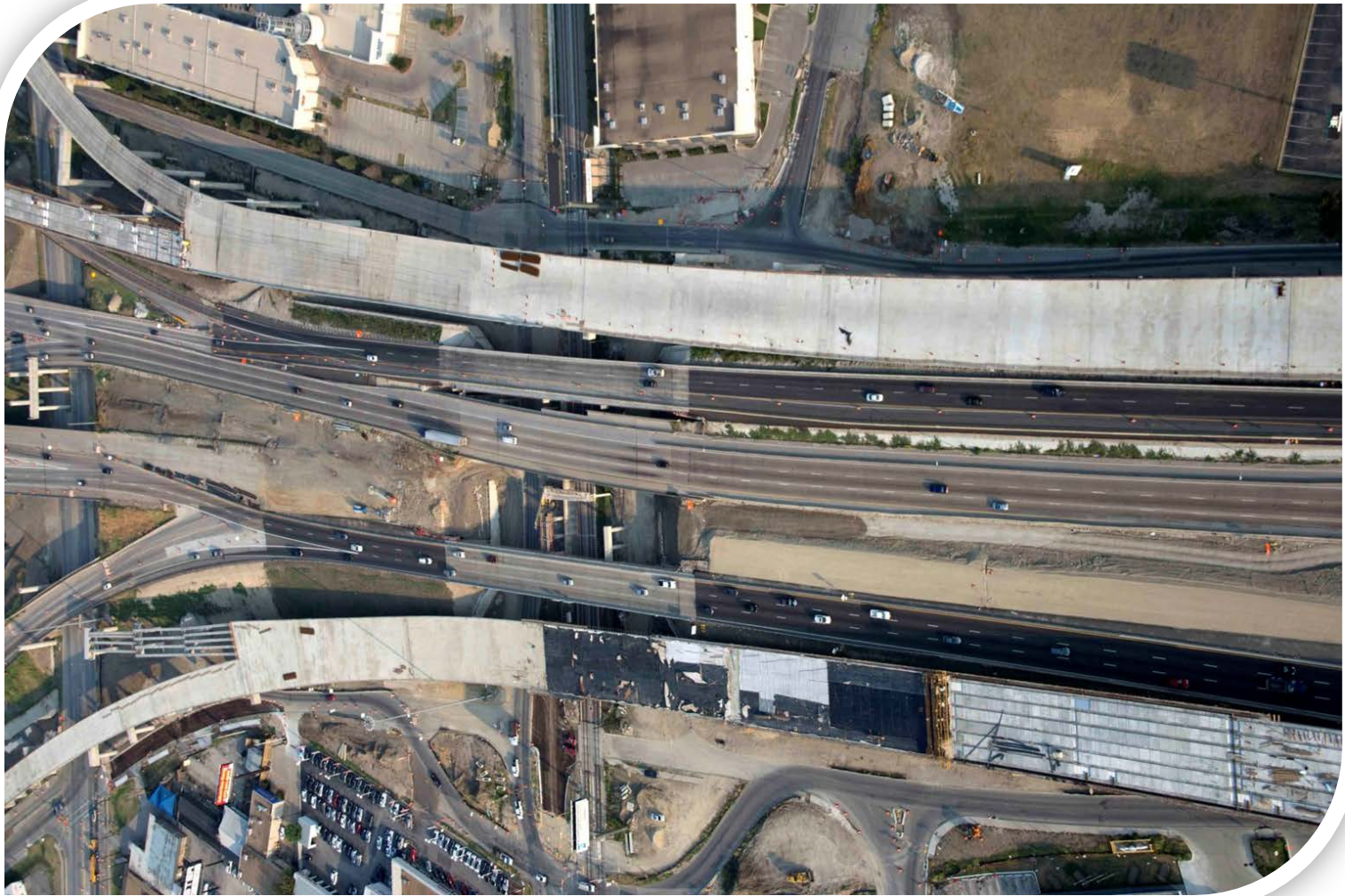
# Progress – Loop 12/I-35E



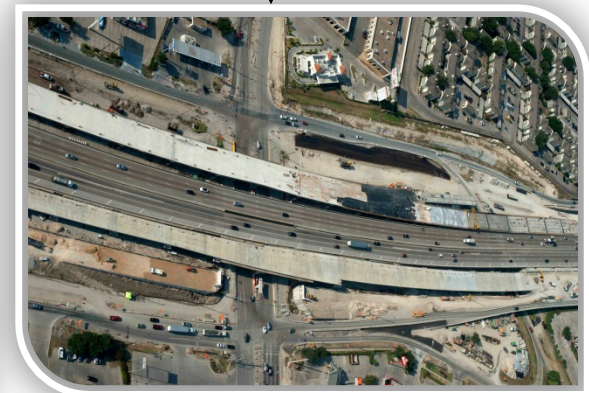
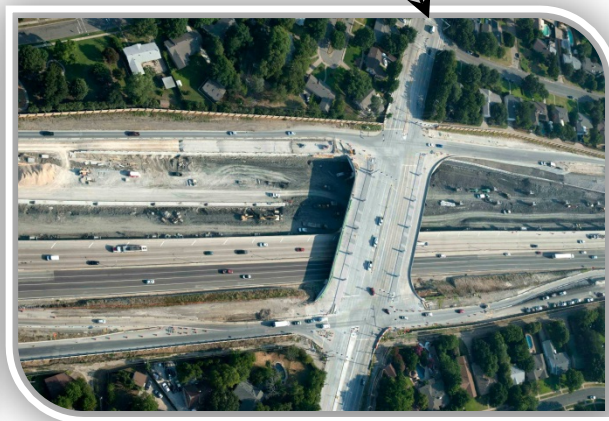
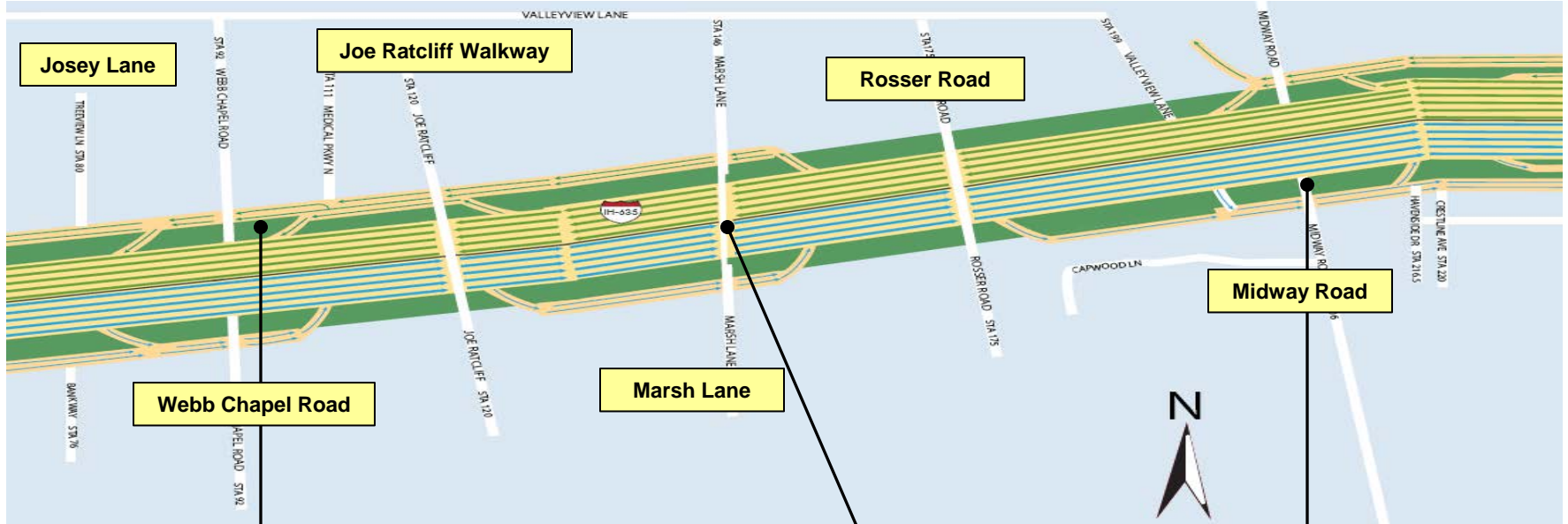
# Progress – I-35E/635



# Progress- Denton Drive



# Segment 2 Construction



# Segment 2 Construction

## PROGRESS TO DATE

ACTIVITY	% To Date
ROADWAY DEMO	68
TEMP WORK	47
TRAFFIC MANAGEMENT	91
EARTHWORK	38
DRAINAGE	78
STRUCTURES	44
NOISE WALLS	94



WBGPL BRIDGE 72



WBML STA. 140+00



WB WEBB CHAPEL BY-PASS



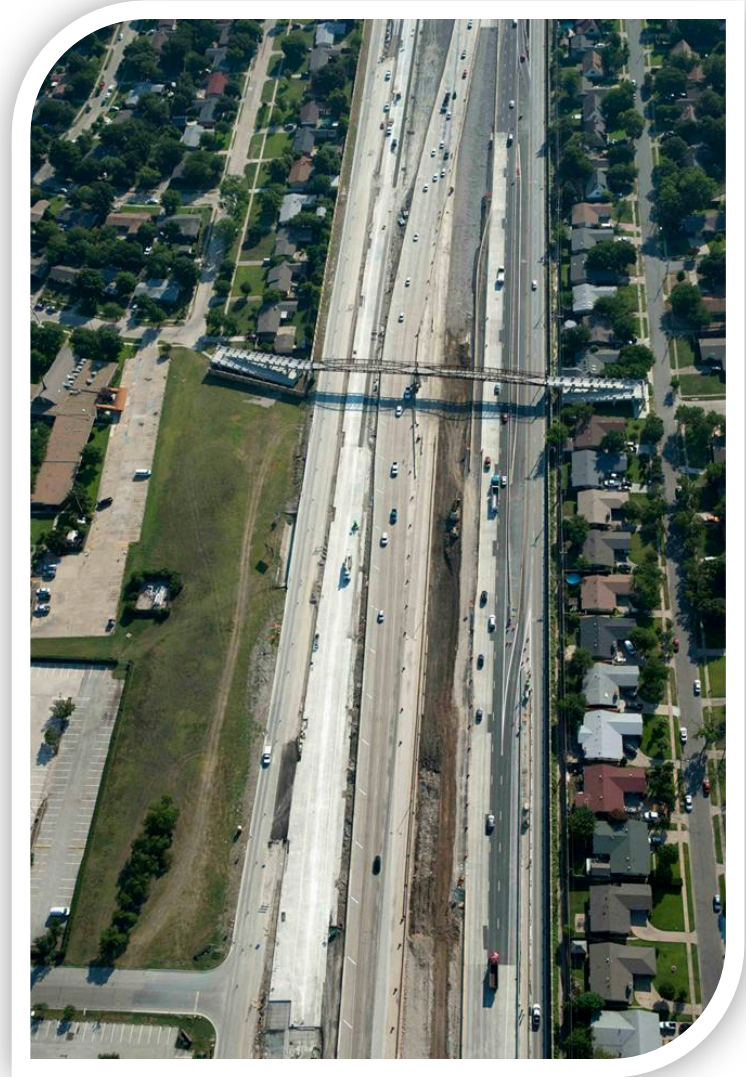
WBGPL STA 225+00



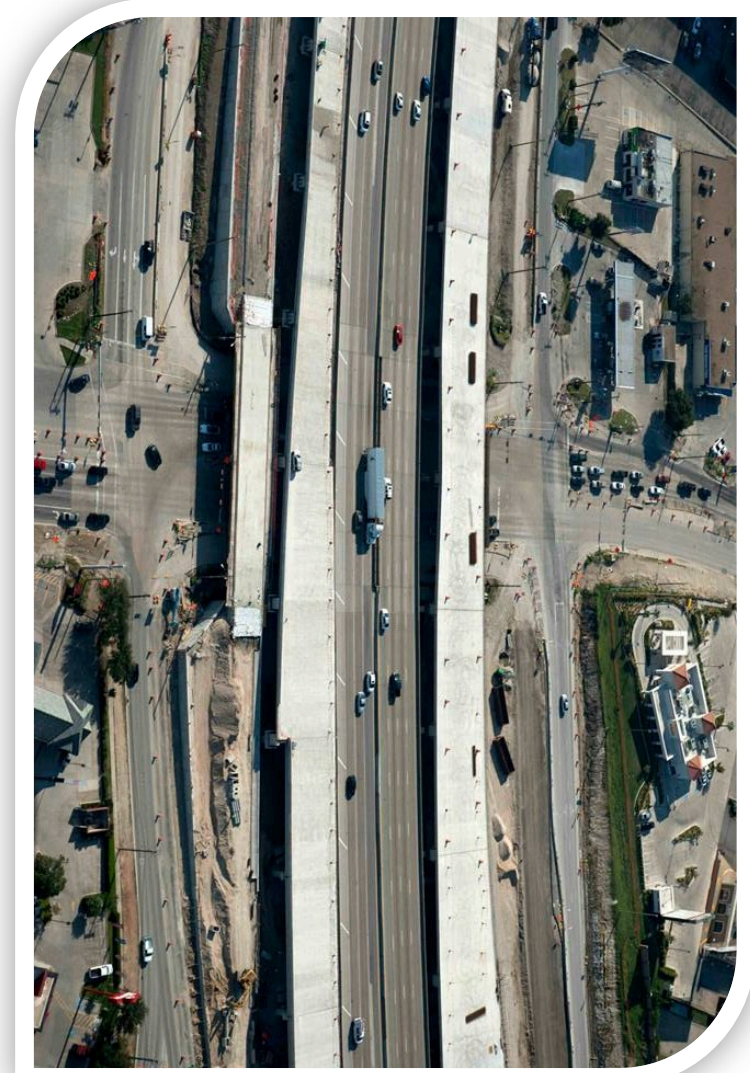
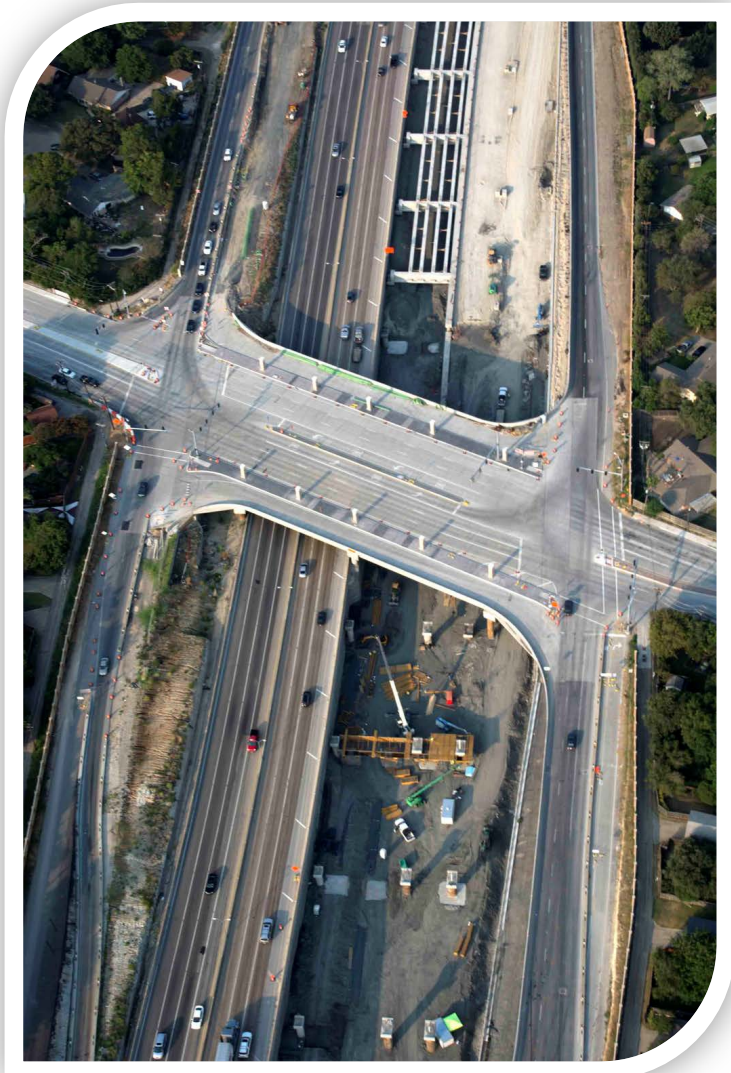
EBGPL BRIDGES 39 & 39A



# Progress – Josey & Joe Ratchliff



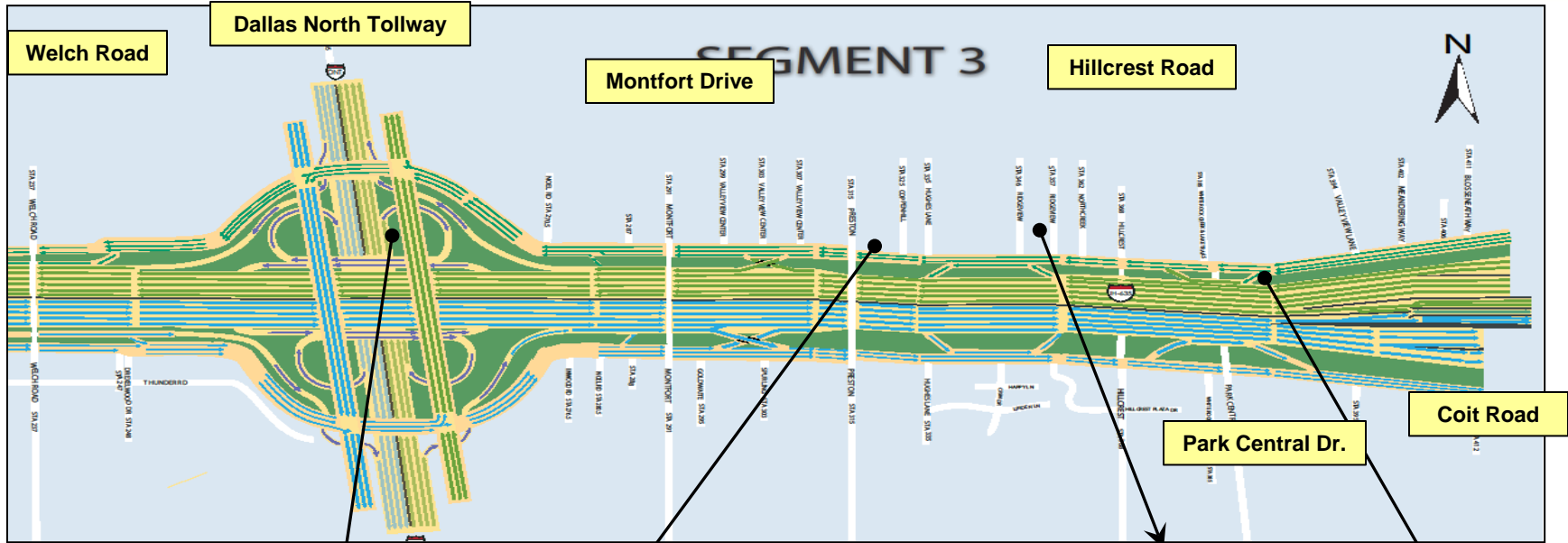
# Progress – Marsh & Midway



# Progress – Marsh



# Segment 3 Construction



DNT Interchange



Preston Bridge



Bridges 57 & 58



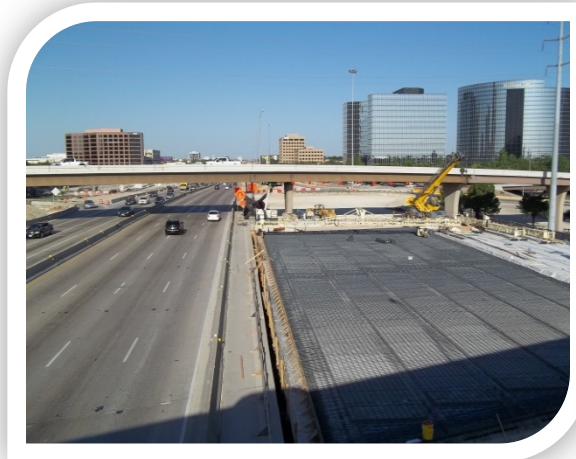
Park Central



# Segment 3 Construction

## PROGRESS TO DATE

ACTIVITY	% TO DATE
ROADWAY DEMO	67
TEMP WORK	47
TRAFFIC MANAGEMENT	89
EARTHWORK	54
DRAINAGE	64
STRUCTURES	49
NOISE WALLS	79



EB GPL BRIDGE OVER DNT



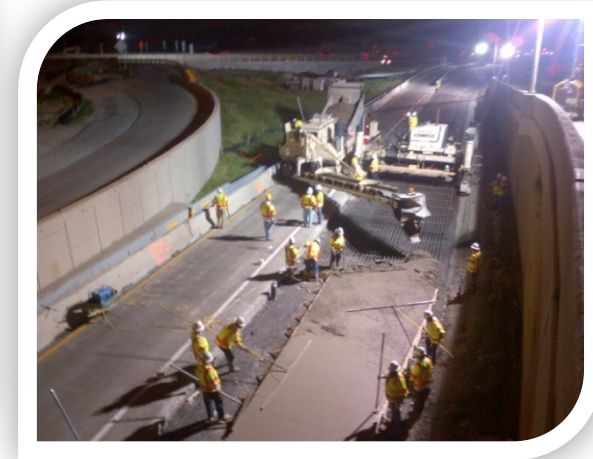
U-SECTION MANAGED LANES



JACK & BORE FOR DEEP DRAINAGE AT MANAGED LANES



JACKING OPERATION AT INWOOD BRIDGE



CONCRETE PAVEMENT POUR

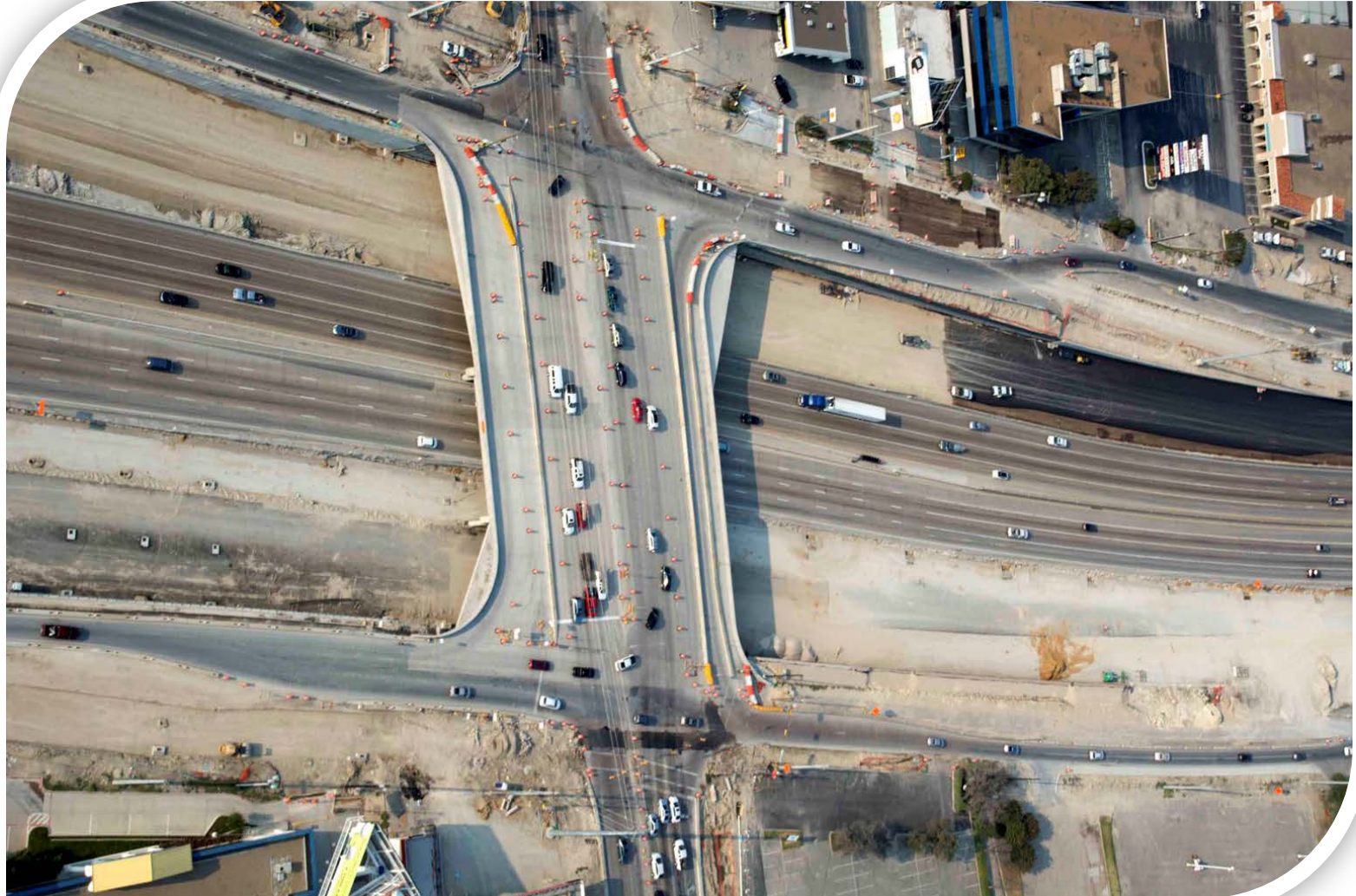
# Progress – DNT Interchange



# Progress – Montfort Drive



# Progress – Preston Road





# Progress – Hillcrest Road





# Progress – Park Central & Coit



# Progress



September 2013



# Progress



**August 2013**

# Future Milestones

## Before December 31, 2013

- Completion of a majority of frontage roads
- Completion of Local Mobility Project along the project
- Opening of finished TEXpress managed toll and GPL lanes from just east of Preston to US-75



# Future Milestones

## By Mid-2014

- Completion of Segment 1 – TEXpress and General Purpose Lanes
  - I-35E from Loop 12 to Valwood
  - I-635 from Josey Lane to Luna Road





# TEXpress Lanes: Introduction

---



# TEXpress Lanes: Overview

---

- Concept developed in 1952 by William Vickery
- No capacity building strategy that is affordable or sustainable will fully solve congestion – You can't build your way out of congestion anymore.
- North Central Texas Council of Governments – Regional Transportation Council concept
- Enable drivers to make decisions about their commute where none existed in the past
- More than 15 corridors have this approach in place with great success



# TEXpress Lanes System



**NTE PROJECT**  
Opens 2015

**DFW CONNECTOR**  
Opens 2014

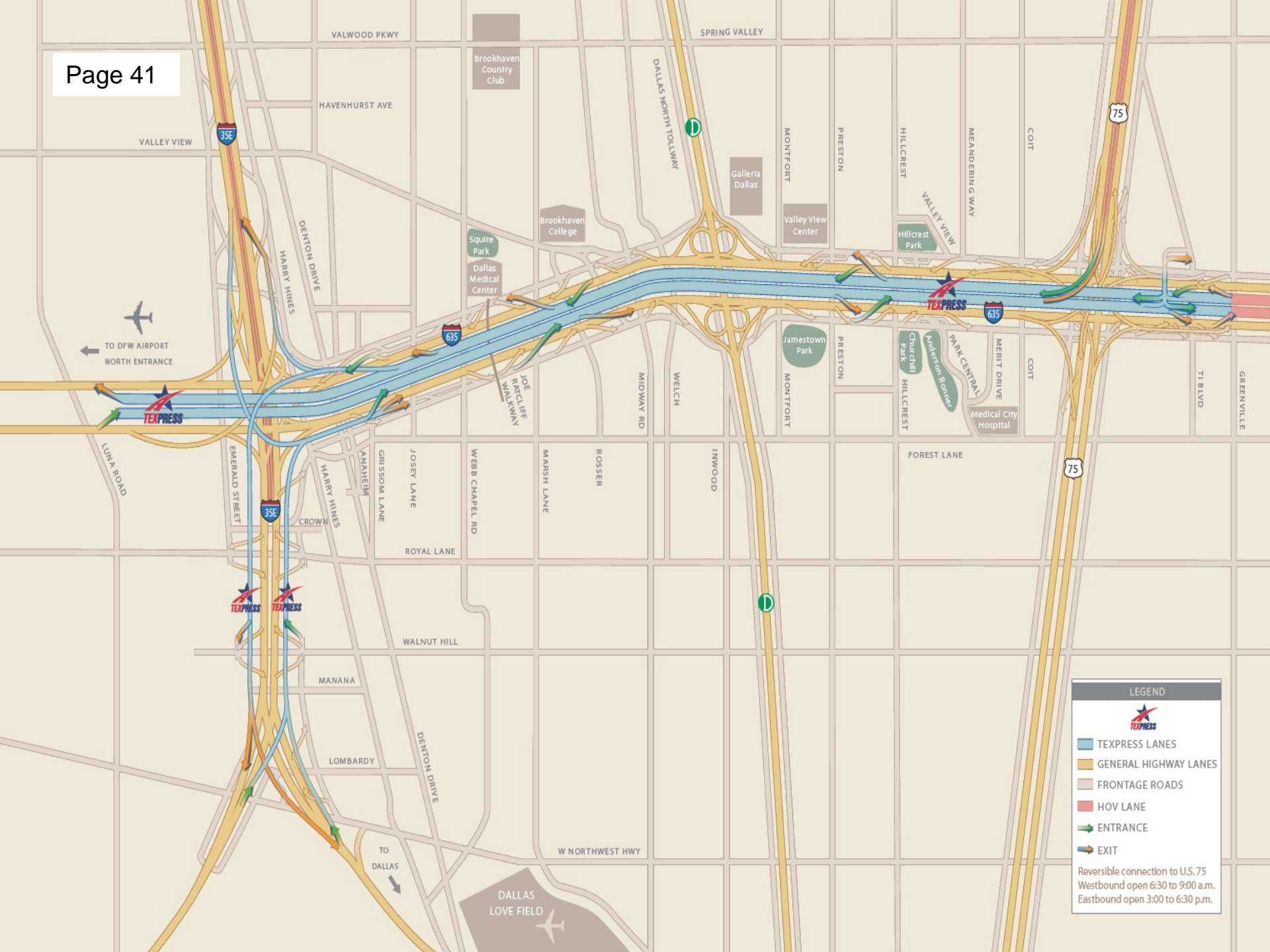
**LBJ PROJECT**  
Phase 1 Opens December 2013  
Phase 2 Opens April 2015  
Phase 3 Opens December 2015

**NTE 35W PROJECT**  
3A Opens 2018  
3B Opens 2017

**I-30 PROJECT**  
Opens 2015

**35E PROJECT**  
Opens 2018

## North Texas TEXpress Lanes System



**LEGEND**

- TEXPRESS
- TEXPRESS LANES
- GENERAL HIGHWAY LANES
- FRONTAGE ROADS
- HOV LANE
- ENTRANCE
- EXIT

Reversible connection to U.S. 75  
Westbound open 6:30 to 9:00 a.m.  
Eastbound open 3:00 to 6:30 p.m.

# TEXpress Lanes: Driver Choice

- **Driver Choice:**

- Free general highway lanes
- Tolloed TEXpress Lanes
- Robust signage, transparent toll rates by segment



- **TEXpress Lanes:**

- 50 mph (Limit 70 mph)
- LBJ TEXpress Lanes 13.3 miles long total in 3 segments
- Use TollTag, TxTag or EZ TAG – Approx. 50% more for non-tag drivers

- **TEXpress Rates:**

- As demand increases, price increases
- HOV discounts – 2+, peak hours, valid tag, Drive On TEXpress app
- \$.15-\$.65 (Non-Peak) ----- \$.30-\$.95 (Peak)
- Shape- and Size-based vs. Axle-based

# TEXpress Lanes: More Info

- Specials – discounts
- Billing – through NTTA
- Choice – drivers have options
- Improved Mobility:
  - All-new general highway lanes, access roads, bypass lanes
  - Plus new TEXpress Lanes to manage congestion
- First LBJ TEXpress Lanes will open for testing and evaluation in December 2013



# TEXpress Lanes: In the Know



- **CALL:** (877) LBJ-EXPY / (877) 525-3979
- **EMAIL:** [info@lbjexpress.com](mailto:info@lbjexpress.com)
- **WEBSITE:** [www.lbjexpress.com](http://www.lbjexpress.com) (through November)

- **NEW WEBSITE:** [www.lbjtexpresslanes.com](http://www.lbjtexpresslanes.com)



- **FACEBOOK:** LBJ Express
- **TWITTER:** @lbjexpress
- **TEXT ALERTS:** Text @lbjexpress to 23559
- **LBJ EXPRESS MARKETPLACE:** [www.lbjbiz.com](http://www.lbjbiz.com)