

Dallas Water Utilities
Stormwater Operations Division
Flood Control and City-Wide Interior Drainage



THE TRINITY
DALLAS

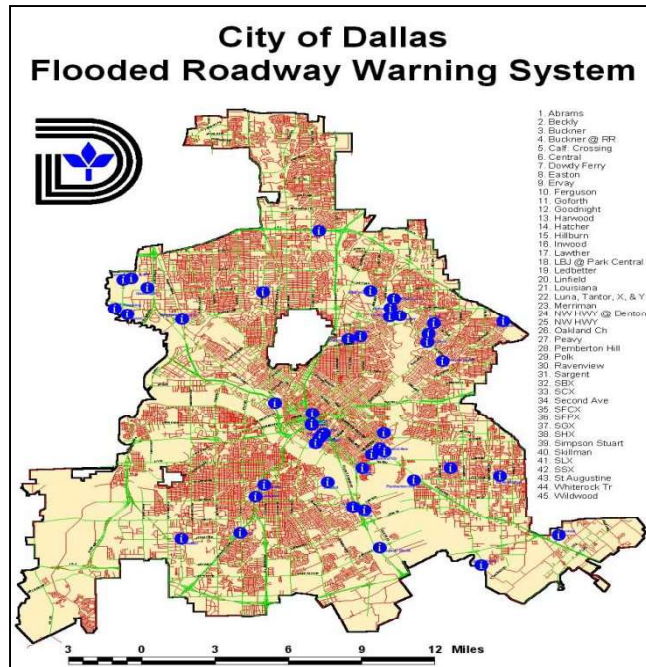


dallas water utilities
city of dallas

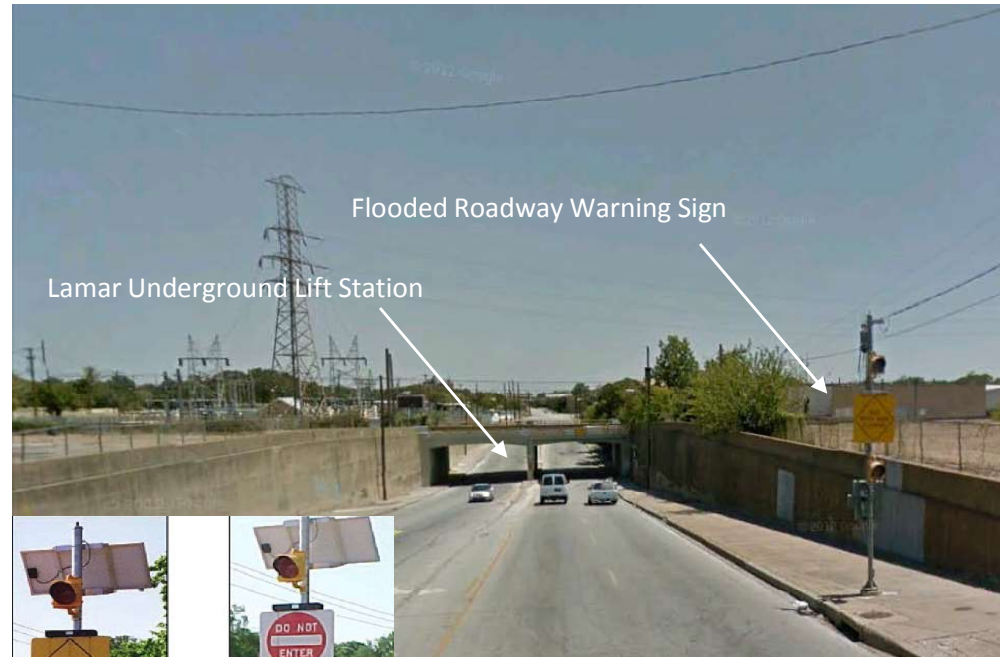
Flood Control Division

- Flooded Roadway Warning System
- Levees and Floodway
- Pump Stations
- Pressure Sewers
- Cole Park Detention and Pumping
- Storm Drainage System

Flooded Roadway Warning System (FRWS)



- 40 FRWS Locations Citywide
- 8 Underground lift stations

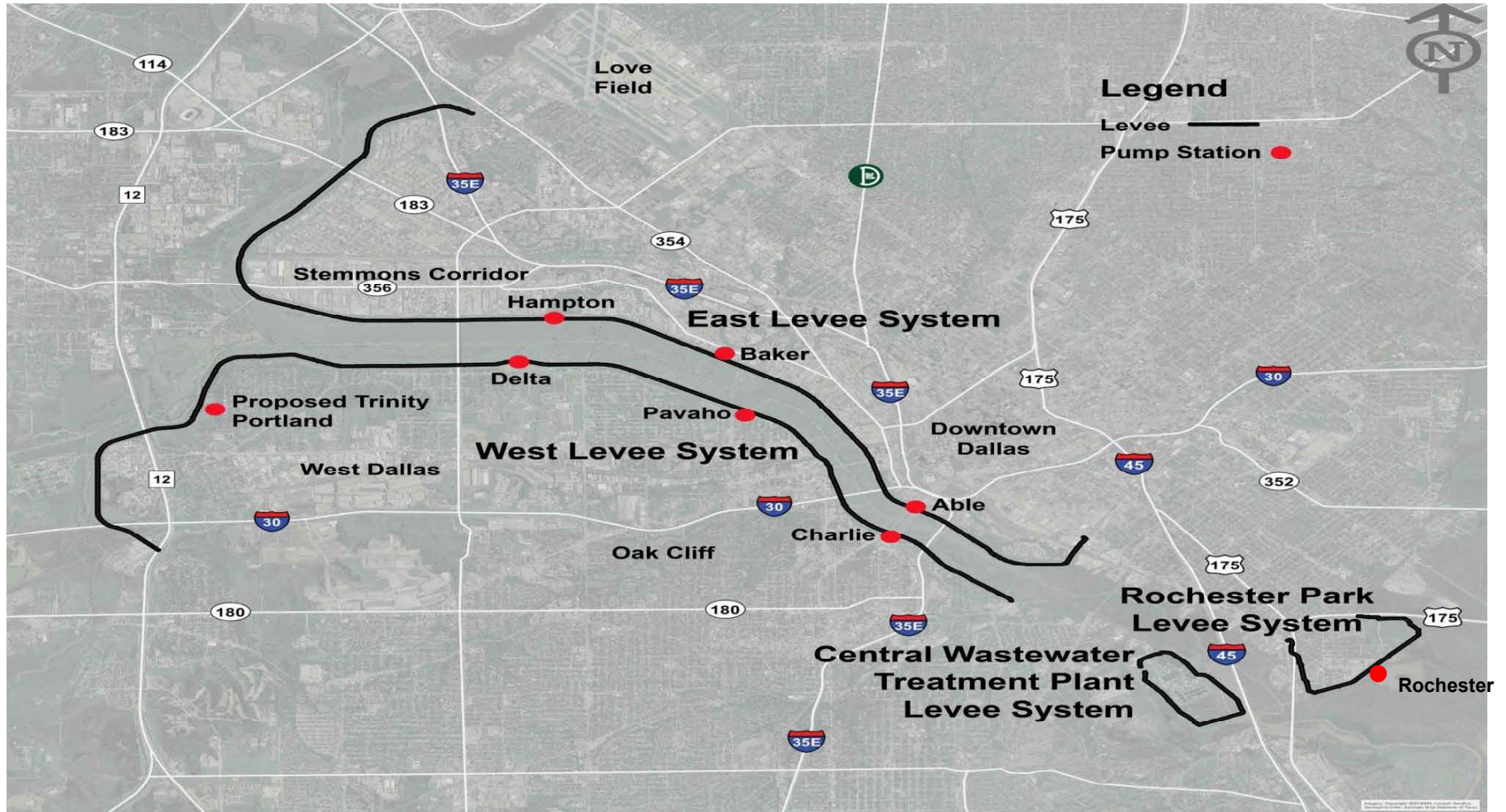


Levees and Floodway

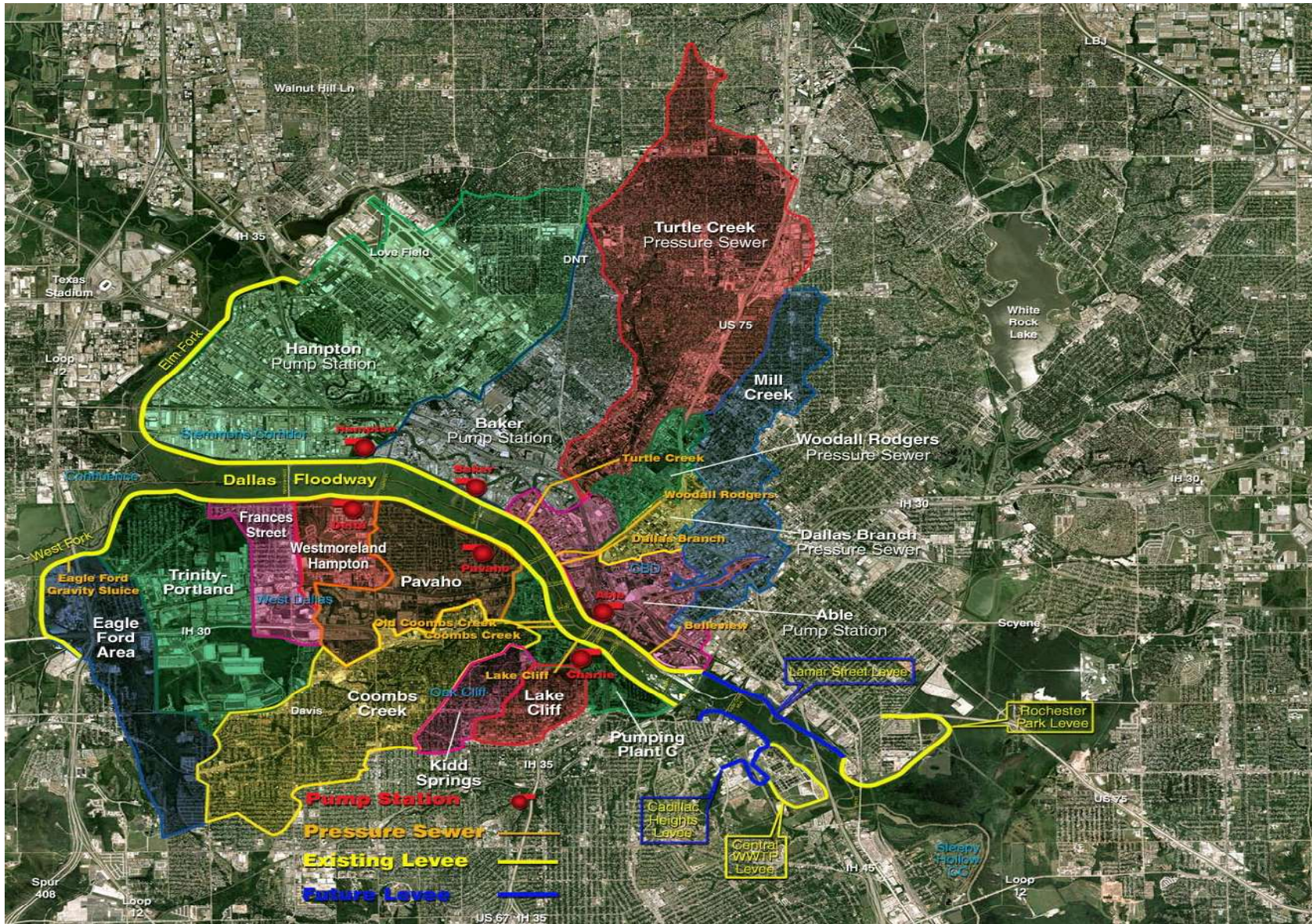


- Watershed - 6050 Square Miles
- Levees - 30
- Floodway - 2100 acres

Dallas Floodway System Map



Pump Station Watersheds



Able Pumping Plants



615 S. Riverfront Blvd. (75207)



- 1 Station at this location
 - Able Pump Station (905,000 GPM)
 - Built in 2018

Baker Pumping Plants



2255 Irving Blvd (75207)

- 3 Stations at this location
 - Old Baker(208,000 GPM)
 - Built in 1932
 - New Baker(406,000 GPM)
 - Built in 1975

- Baker 3(706,000 GPM)
 - Built in 2015



Hampton Pumping Plants



End of Conveyor Lane (75247)



- 2 Stations at this location
 - Old Hampton(206,000 GPM)
 - Built in 1955
 - New Hampton(406,000 GPM)
 - Built in 1975

Charlie Pumping Plant



600 1st Street (75226)

- 1 Station at this location
 - Charlie - (86,000 GPM)
 - Built in 1932



Pavaho Pumping Plant



400 Canada Drive (75212)



- 2 Stations at this location
- Old Pavaho (82,000 GPM)
- Built in 1954
 - New Pavaho (381,000 GPM)
 - Built in 2012

Delta Pumping Plant

2400 Canada Lane(75212)



- Delta - (90,000 GPM)
- Built in 1932

Rochester Pumping Plant

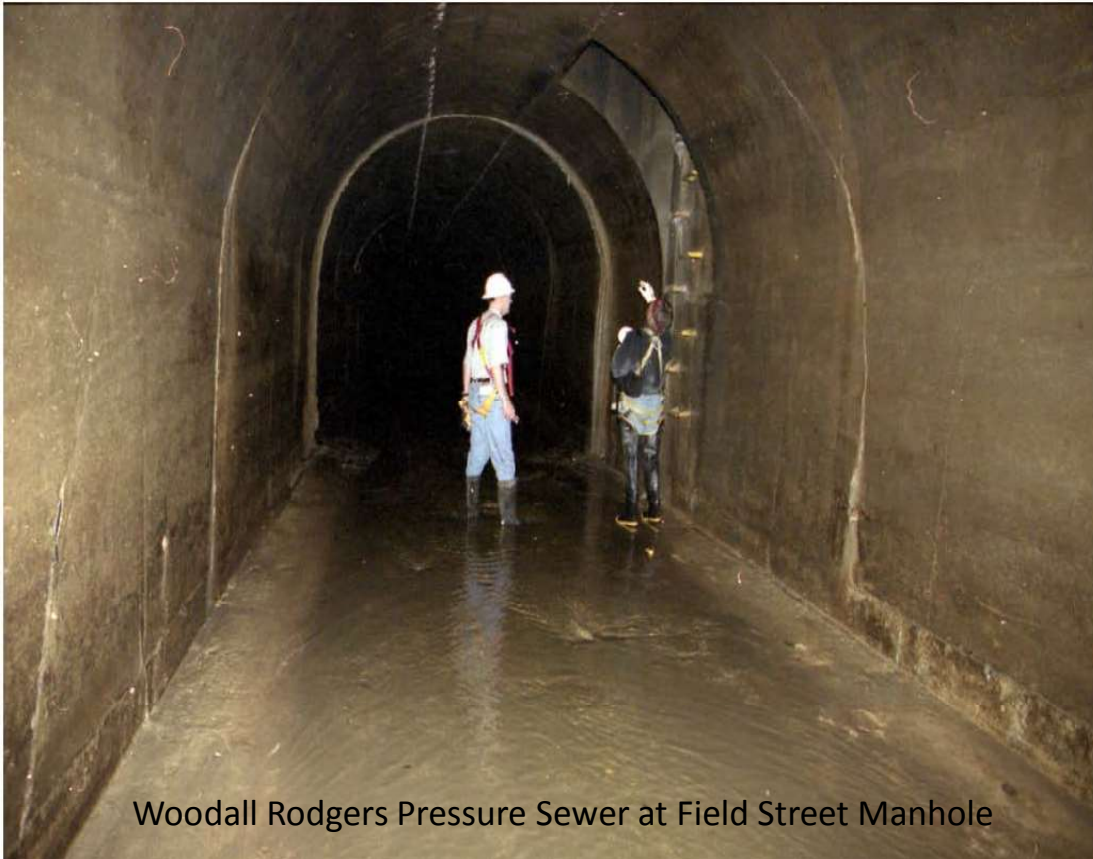


3096 Municipal (75215)

- Rochester - (84,900 GPM)
- Built in 1992



Pressure Sewers



Woodall Rodgers Pressure Sewer at Field Street Manhole

Bellevue

Watershed = 2,210 acres

Discharge = 2,637,000 GPM / 5,875 CFS

Constructed = 1932

Outfall = 18 foot horseshoe (no flap gate)

Dallas Branch

Watershed = 312 acres

Discharge = 606,000 GPM / 1,350 CFS

Constructed = 1932

Outfall = 12 foot CPC

Woodall Rodgers

Watershed = 606 acres

Discharge = 754,000 GPM / 1,679 CFS

Constructed = late 1970's

Outfall = 10 X 9 foot flap gate

Turtle Creek

Watershed = 5,276 acres

Constructed = 1960

Outfall = Four – 10 foot diameter openings

Lake Cliff

Watershed = Lake

Discharge = 396,000 GPM / 883 CFS

Constructed = 1960

Outfall = 6' X 8' concrete conduit (2 - 96 inch flap gate)

Coombs Creek

Watershed = N/A

Discharge = 3,146,000 GPM / 7,010 CFS

Constructed = 1932

Outfall = 4 – 8 X 10 foot sluice gates (no flap gate)

Cole Park Detention & Pumping

3110 Cambrick (75204)

- 90,000 GPM
- 100 feet underground
- 71 million gallons storage



Storm Drainage

- 1800 miles of Storm Drainage Pipes
- 115 miles of City owned creeks
- 48 miles of lined channels

