

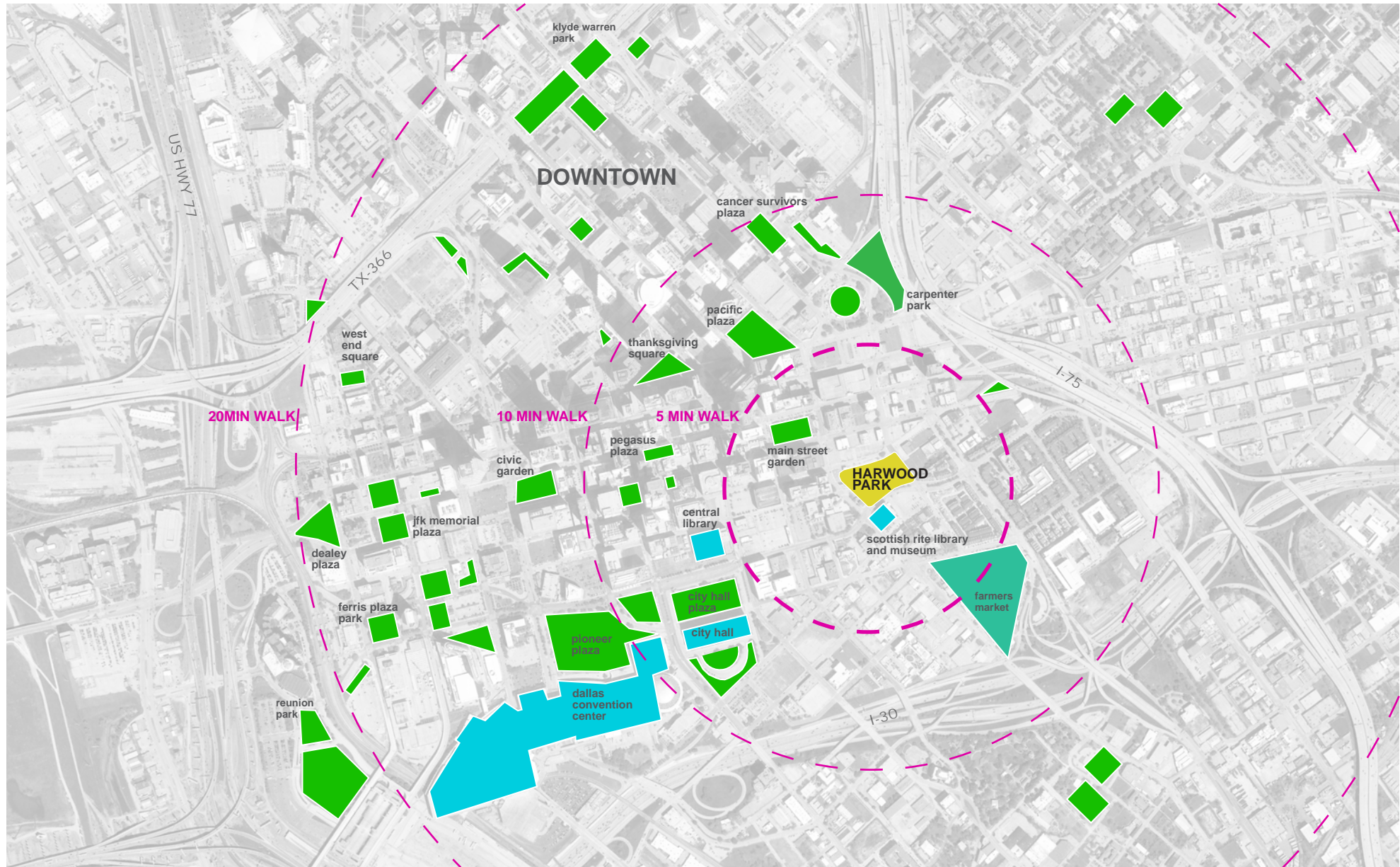
Harwood Park

URBAN DESIGN PEER REVIEW PANEL



TEN EYCK
LANDSCAPE ARCHITECTS

OVERALL PARK DESIGN



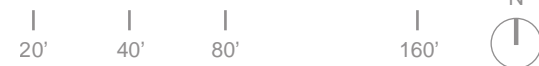
SITE CONTEXT



- KEY**
- 1 ENTRY PLAZA
 - 2 YOGA / EVENT LAWN
 - 3 GOLD RING SHADE STRUCTURE
 - 4 SIGNAGE WALL
 - 5 THE GROVE
 - 6 DISPLAY GARDEN
 - 7 NORTHEAST ENTRY PLAZA
 - 8 PARKING LOT
 - 9 RAIN GARDEN
 - 10 INTERACTIVE WATER FEATURE
 - 11 DOG INTERCEPT
 - 12 KIDS PLAY
 - 13 FLEXIBLE SEATING
 - 14 BRIDGE CROSSING
 - 15 SPORTS COURT
 - 16 S. HARWOOD TRELLIS
 - 17 DOG PARK
 - 18 GREAT LAWN
 - 19 PROMENADE
 - 20 BIKE RACKS
 - BIKE ROUTE

OVERALL SITE PLAN

SCALE: 1" = 80'-0"



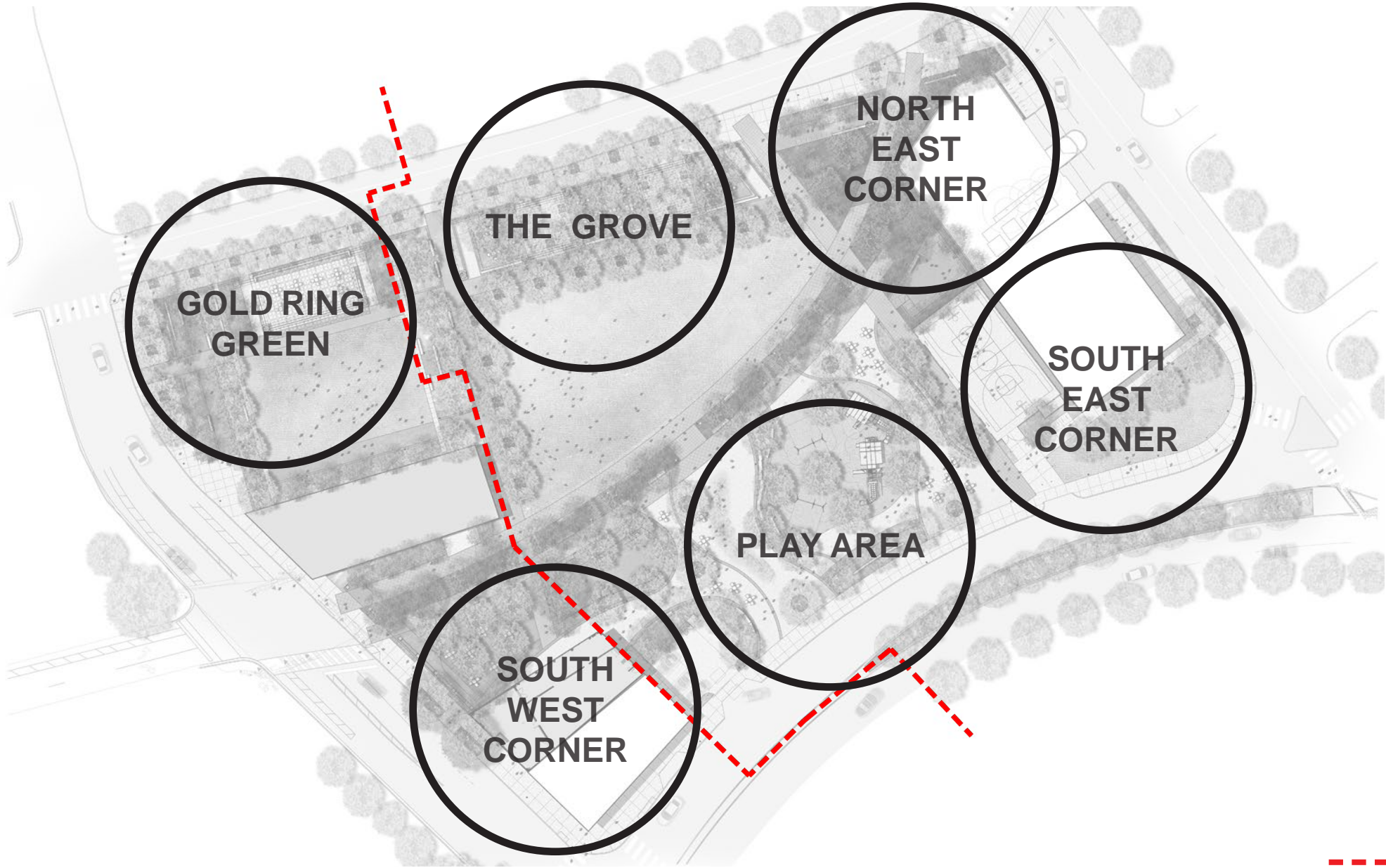


EAST QUARTER

- KEY**
- 1 ENTRY PLAZA
 - 2 YOGA / EVENT LAWN
 - 3 GOLD RING SHADE STRUCTURE
 - 4 SIGNAGE WALL
 - 5 THE GROVE
 - 6 DISPLAY GARDEN
 - 7 NORTHEAST ENTRY PLAZA
 - 8 PARKING LOT
 - 9 RAIN GARDEN
 - 10 INTERACTIVE WATER FEATURE
 - 11 DOG INTERCEPT
 - 12 KIDS PLAY
 - 13 FLEXIBLE SEATING
 - 14 BRIDGE CROSSING
 - 15 SPORTS COURT
 - 16 S. HARWOOD TRELLIS
 - 17 DOG PARK
 - 18 GREAT LAWN
 - 19 PROMENADE
 - 20 BIKE RACKS
- HARWOOD HISTORIC DISTRICT BOUNDARY
 - - - BIKE ROUTE

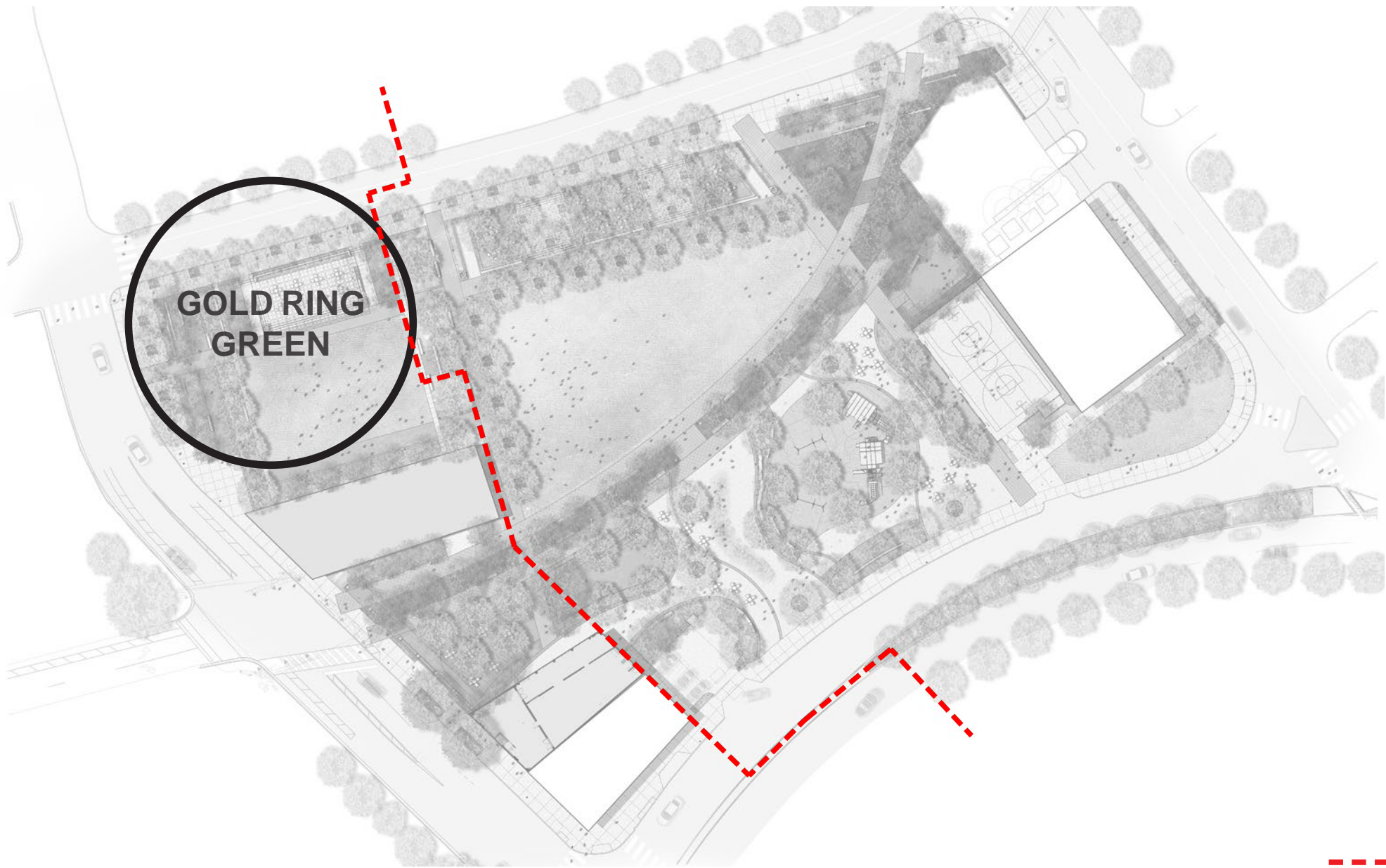
HISTORIC DISTRICT OVERLAY





--- HARWOOD HISTORIC DISTRICT BOUNDARY

PARK AREAS



**GOLD RING
GREEN**

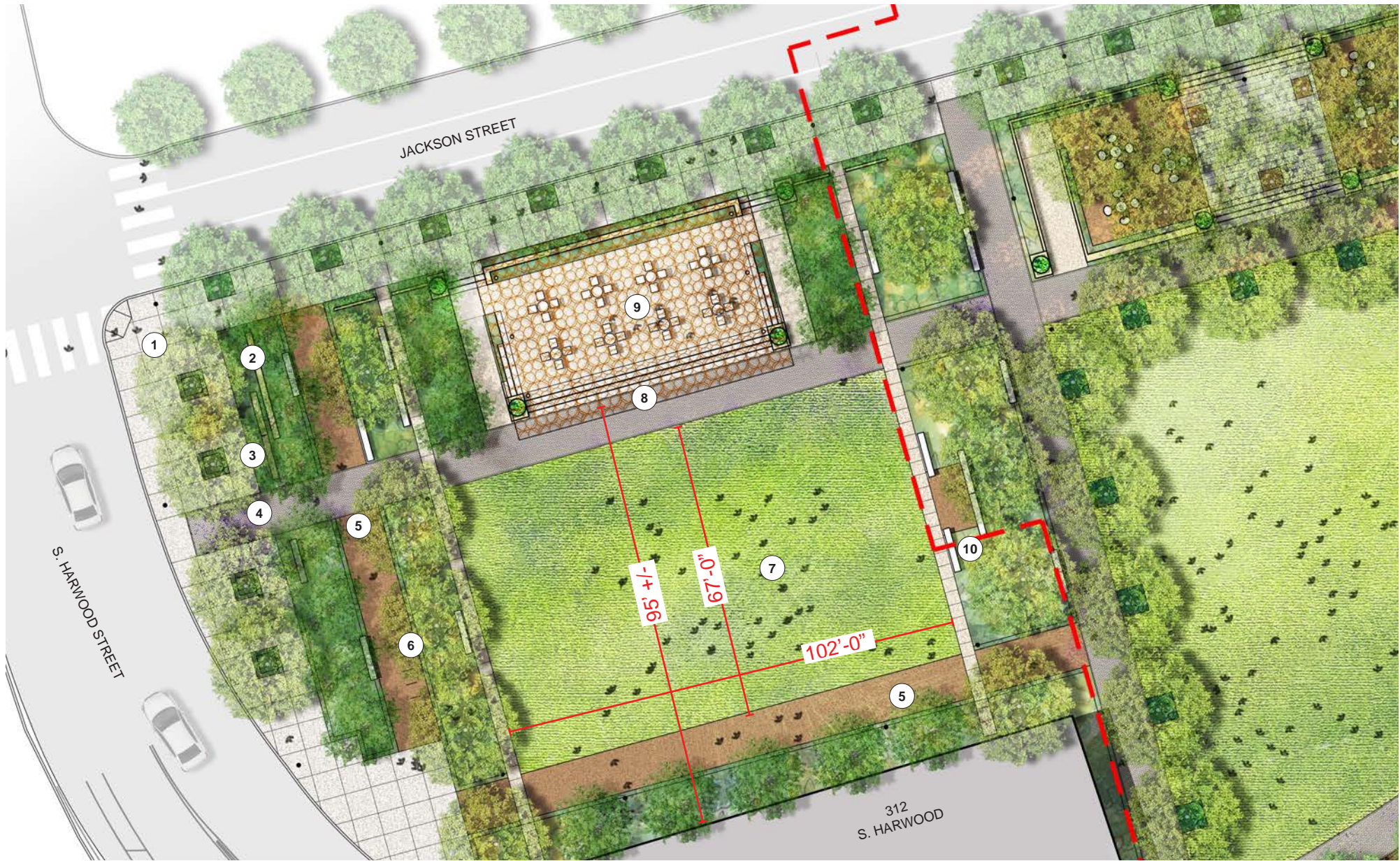
--- HARWOOD HISTORIC DISTRICT BOUNDARY

KEY PLAN

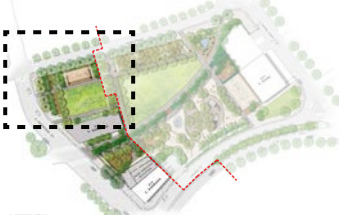
8 HARWOOD PARK | Dallas, TX
URBAN DESIGN PEER REVIEW PANEL



TEN EYCK
LANDSCAPE ARCHITECTS



- KEY**
- 1 ENTRY PLAZA
 - 2 SIGNAGE WALL
 - 3 PLANTING AREA
 - 4 UNIT PAVING
 - 5 STABILIZED DG & STEEL HEADER
 - 6 BIKE RACKS
 - 7 LAWN
 - 8 GOLD RING ARBOR
 - 9 RAISED SEATING AREA
 - 10 BENCHES
 - - - HARWOOD HISTORIC DISTRICT BOUNDARY



ENLARGEMENT - GOLD RING GREEN

9 HARWOOD PARK | Dallas, TX
URBAN DESIGN PEER REVIEW PANEL



WIDE FLANGE STEEL
SUPPORTING STRUCTURE,
21" H PERIMETER BEAMS WITH
12" INNER BEAMS

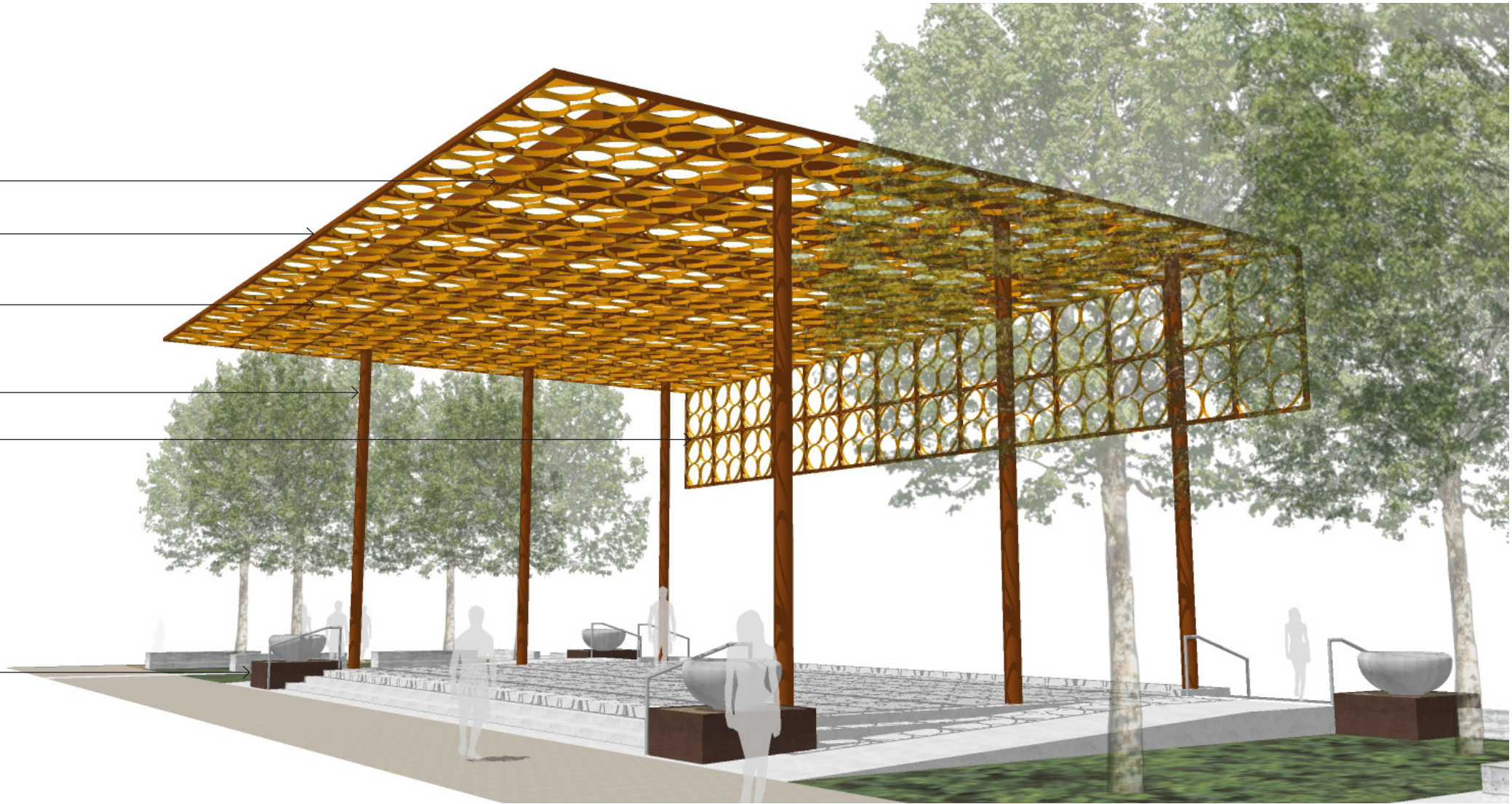
INTERIM STRUCTURE, 3" X 3" X
3/16" TUBE STEEL WITH CABLE
HANGERS FOR GOLD RINGS

ACCENT LIGHT FIXTURES
MOUNTED TO UNDERSIDE OF
FRAME

10" DIA. PIPE COLUMNS

GOLD RING OVERHANG

PLANTER PEDESTALS,
BOARD FORM CONCRETE
OR NATURAL STEEL



DETAILS - GOLD RING ARBOR

10 HARWOOD PARK | Dallas, TX
URBAN DESIGN PEER REVIEW PANEL



TEN EYCK
LANDSCAPE ARCHITECTS



PERSPECTIVE - CORNER OF JACKSON & S. HARWOOD TOWARD GOLD RING GREEN

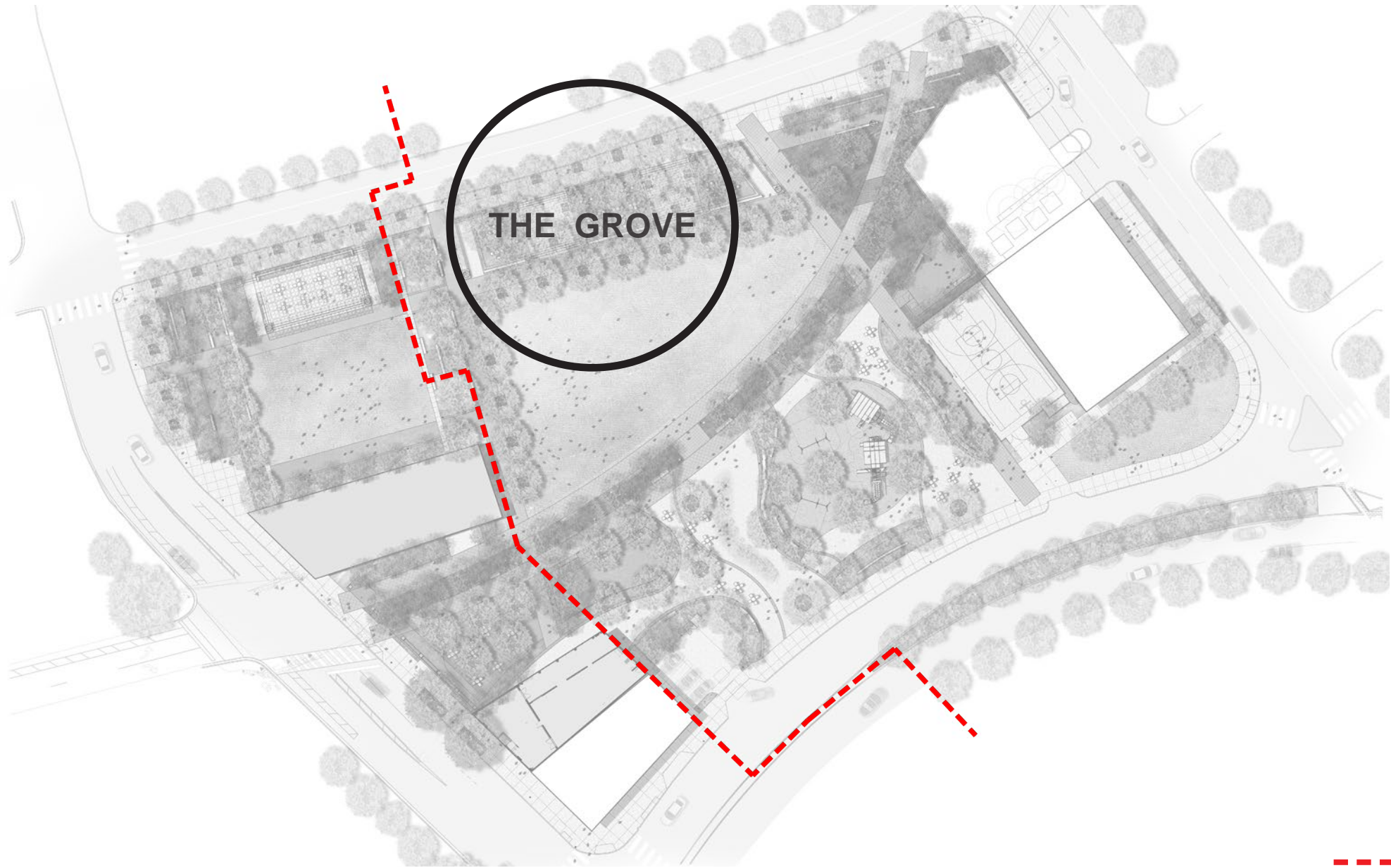


PERSPECTIVE - GOLD RING GREEN AND ARBOR BEYOND

12 HARWOOD PARK | Dallas, TX
URBAN DESIGN PEER REVIEW PANEL



TEN EYCK
LANDSCAPE ARCHITECTS



THE GROVE

--- HARWOOD HISTORIC DISTRICT BOUNDARY

KEY PLAN

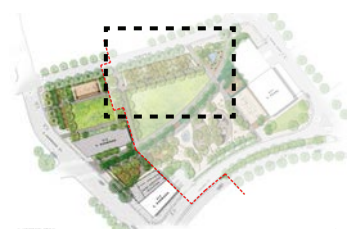
13 HARWOOD PARK | Dallas, TX
URBAN DESIGN PEER REVIEW PANEL



TEN EYCK
LANDSCAPE ARCHITECTS



- KEY**
- 1 UNIT PAVING
 - 2 STABILIZED DG
 - 3 SLOPED WALK 5% (8' WIDE)
 - 4 CONCRETE STEPS
 - 5 ACCENT PLANTERS
 - 6 RECLAIMED STONE PAVING
 - 7 GREAT LAWN
 - 8 LOW CONCRETE WALL
 - 9 PLANTING AREA
 - 10 SHADE TREES
 - - - HARWOOD HISTORIC DISTRICT BOUNDARY



ENLARGEMENT - THE GROVE

SCALE: 1" = 30'-0"

| 7.5'

| 15'

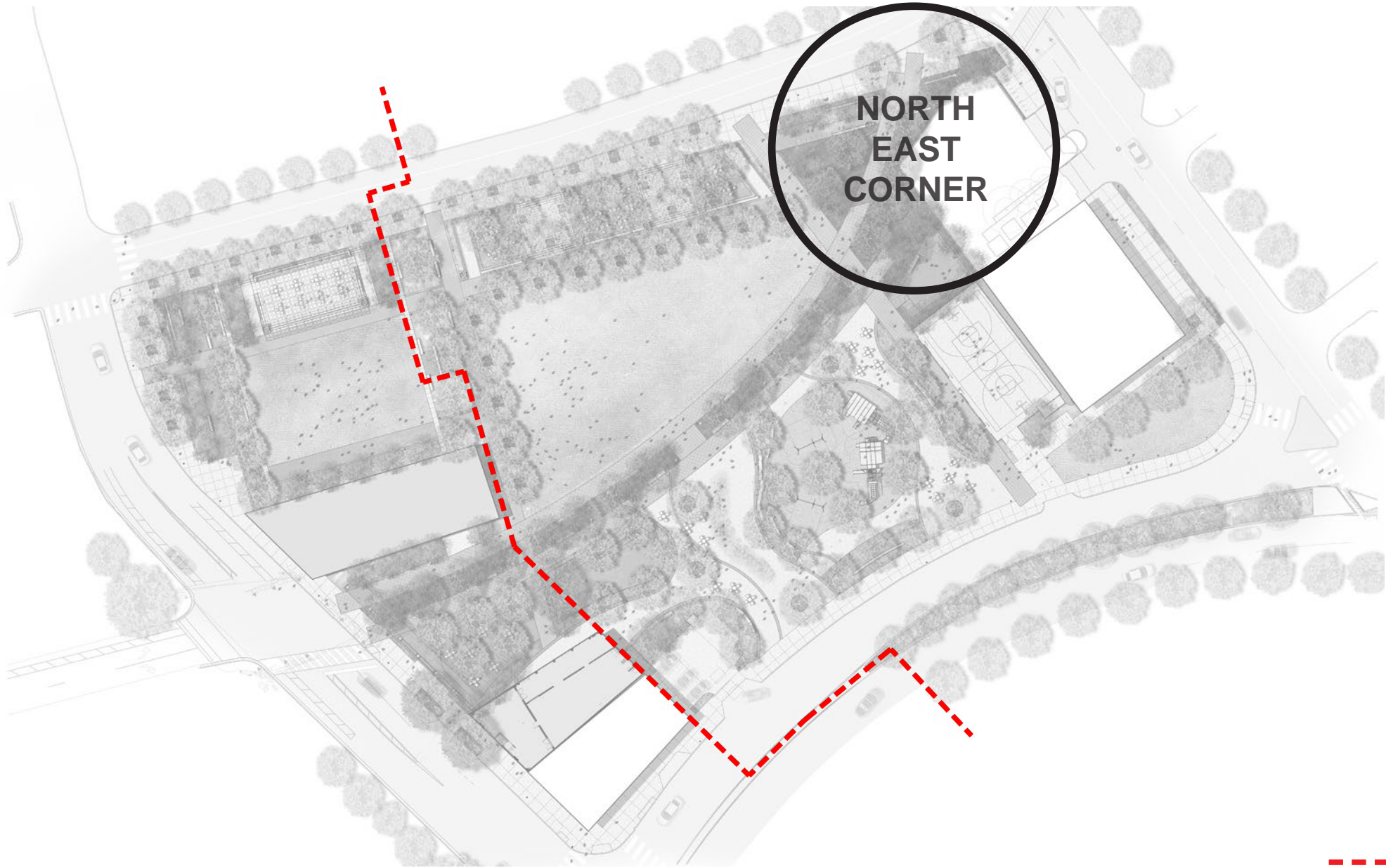
| 30'

| 60'





PERSPECTIVE - THE GROVE LOOKING SOUTH TOWARD SCOTTISH RITE



NORTH
EAST
CORNER

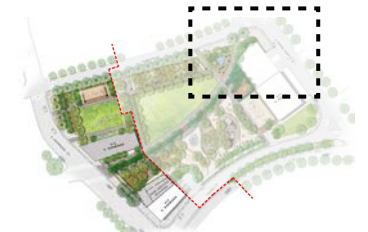
--- HARWOOD HISTORIC DISTRICT BOUNDARY

KEY PLAN



KEY

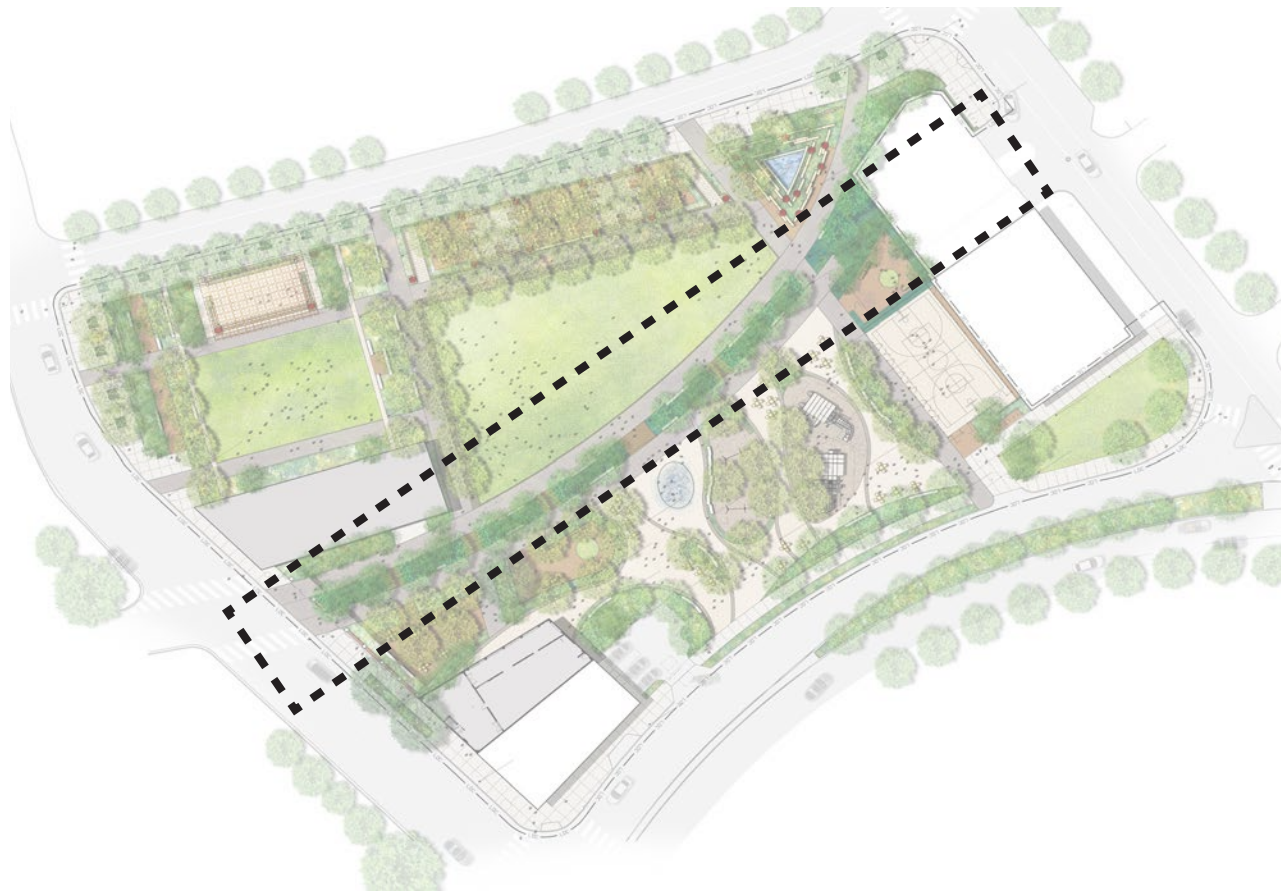
- 1 ENTRY PLAZA
- 2 UNIT PAVING
- 3 SIGNAGE WALL
- 4 7' H BRICK WALL
- 5 PLANTING AREA
- 6 STABILIZED DG
- 7 BRIDGE
- 8 PRIVATE PARKING
- 9 RAIN GARDEN
- 10 DOG PARK



ENLARGEMENT - NORTH EAST CORNER



PERSPECTIVE - NORTH EAST CORNER LOOKING INTO PARK



Bald Cypress



Yaupon Holly



Mexican Buckeye



Rusty Blackhaw Viburnum



Texas Redbud



Inland Sea Oats



Late Boneset



Sabal Minor



Berkeley Sedge



Turk's Cap

NOT TO SCALE

PLANTING PALETTE - PROMENADE / RAIN GARDEN

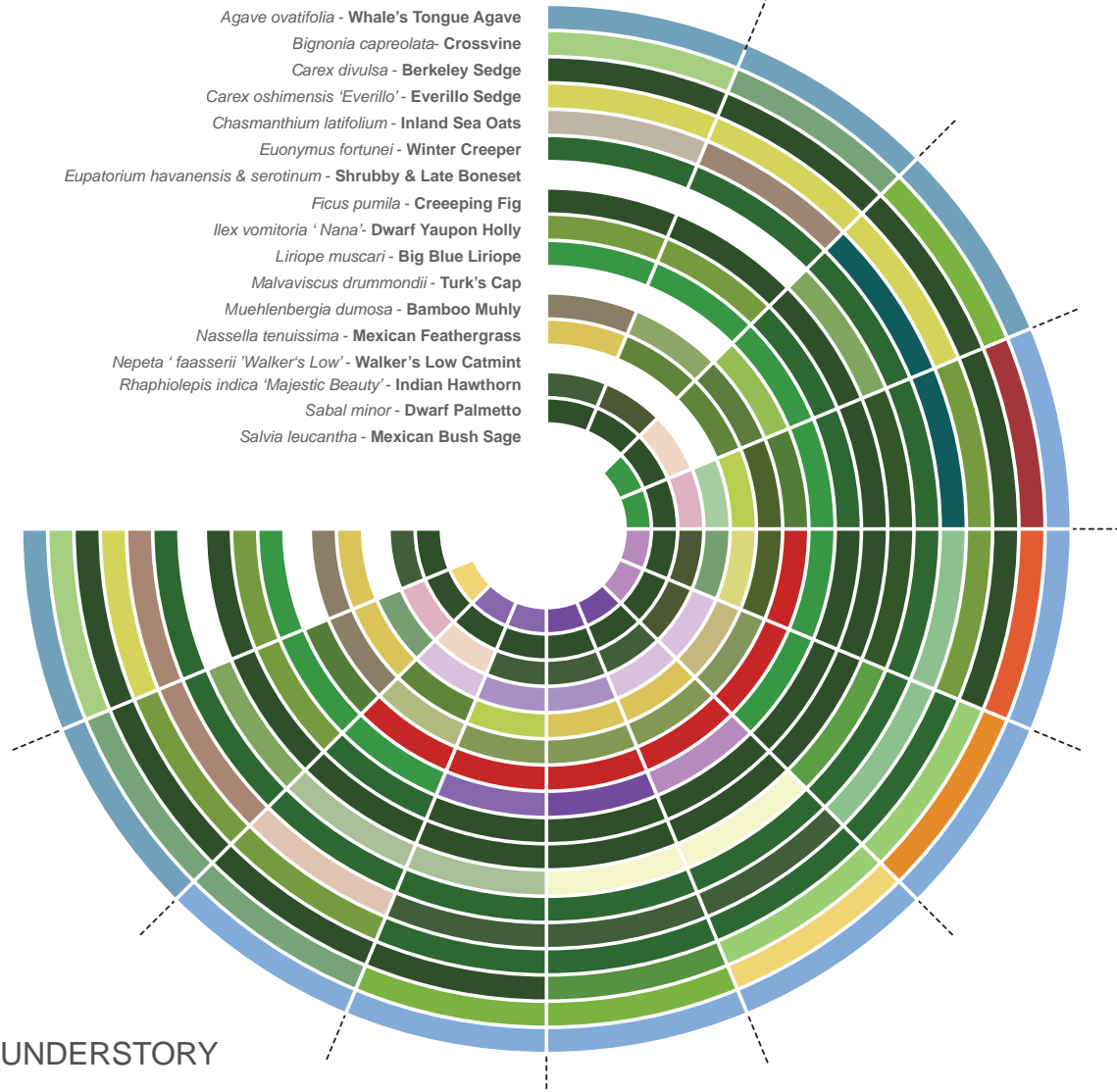
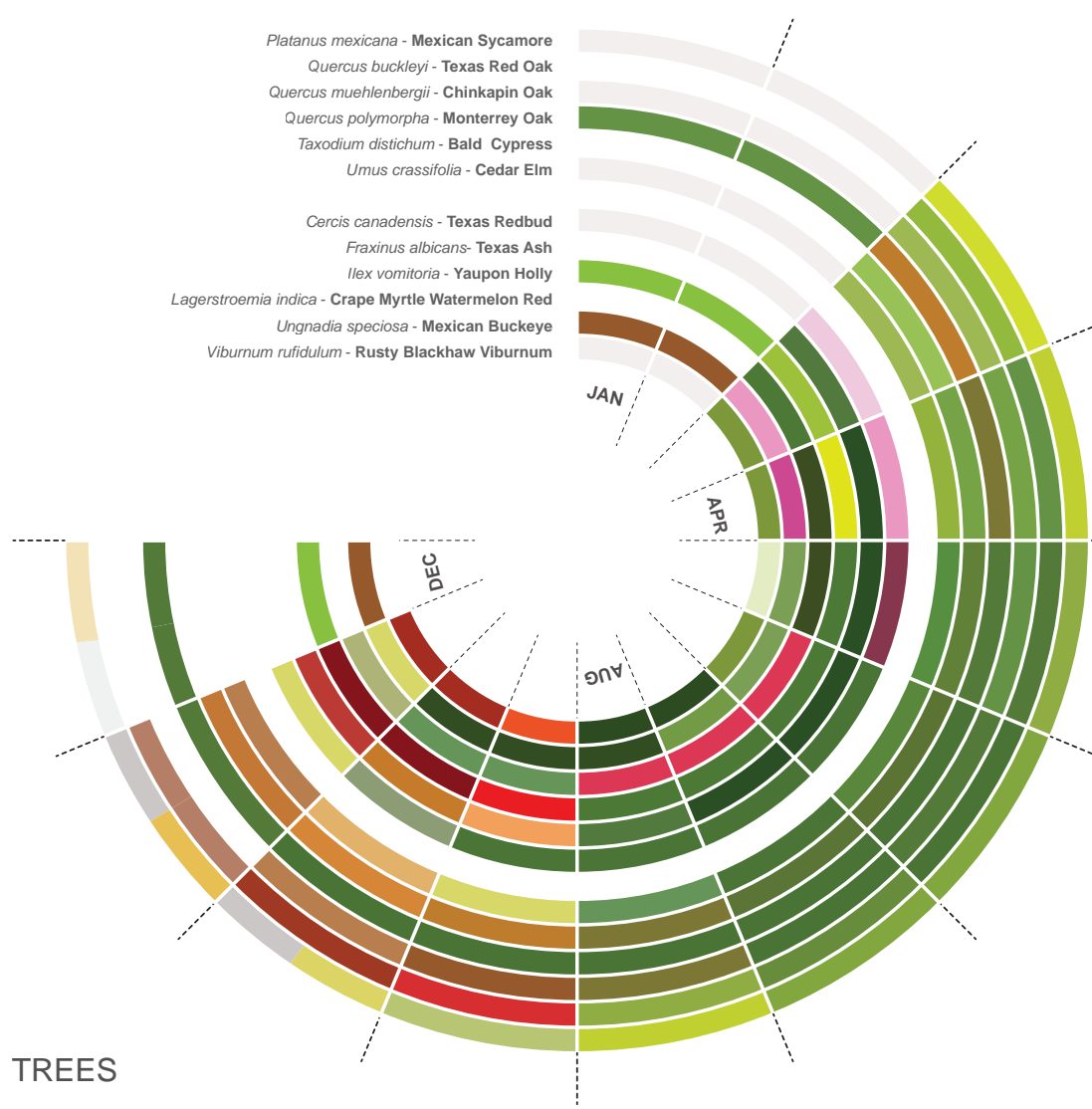


PERSPECTIVE - PROMENADE / RAIN GARDEN

20 HARWOOD PARK | Dallas, TX
URBAN DESIGN PEER REVIEW PANEL



TEN EYCK
LANDSCAPE ARCHITECTS



PLANTING PLAN - TREES & UNDERSTORY SEASONAL DIAGRAM



Platanus mexicana
Mexican Sycamore



Quercus buckleyi
Texas Red Oak



Quercus muehlenbergii
Chinkapin Oak



Cercis canadensis var. *texensis*
Texas Redbud



Fraxinus albicans
Texas Ash



Ilex vomitoria
Yaupon Holly



Quercus polymorpha
Monterrey Oak



Taxodium distichum
Bald Cypress



Ulmus crassifolia
Cedar Elm



Lagerstroemia indica
Crape Myrtle
Watermelon Red



Ungnadia speciosa
Mexican Buckeye



Viburnum rufidulum
Rusty Blackhaw Viburnum

PLANTING PALETTE- TREES



Agave ovatifolia
Whale's tongue agave



Bignonia capreolata
Crossvine



Chasmanthium latifolium
Inland Sea Oats



Euonymus fortunei
Winter Creeper



Ilex vomitoria 'Nana'
Dwarf Yaupon Holly



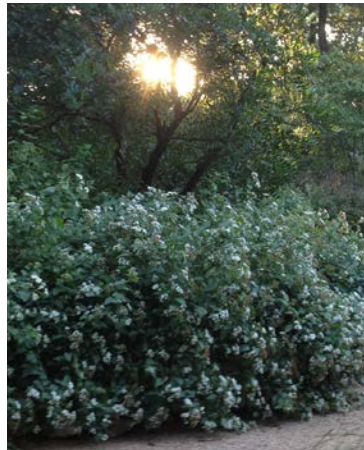
Liriope muscari
Big Blue Liriope



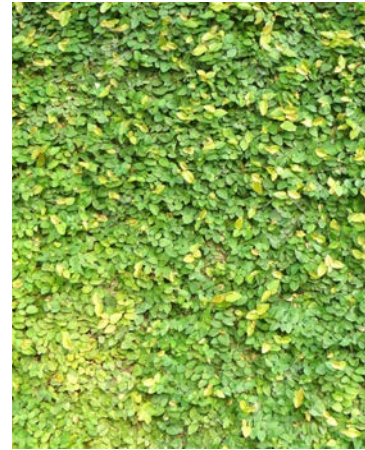
Carex divulsa
Berkeley Sedge



Carex oshimensis 'Everillo'
Everillo Sedge



Eupatorium havanensis
Shrubby Boneset



Ficus pumila
Creeping Fig



Malvaviscus drummondii
Turk's Cap



Muehlenbergia dumosa
Bamboo Muhly

PLANTING PALETTE - UNDERSTORY



Nasella tenuissima
Mexican Feathergrass



Nepeta x faassenii 'Walker's low'
Walker's Low Catmint



Salvia leucantha
Mexican Bush Sage



Raphiolepis indica
'Majestic Beauty'
Indian Hawthorne

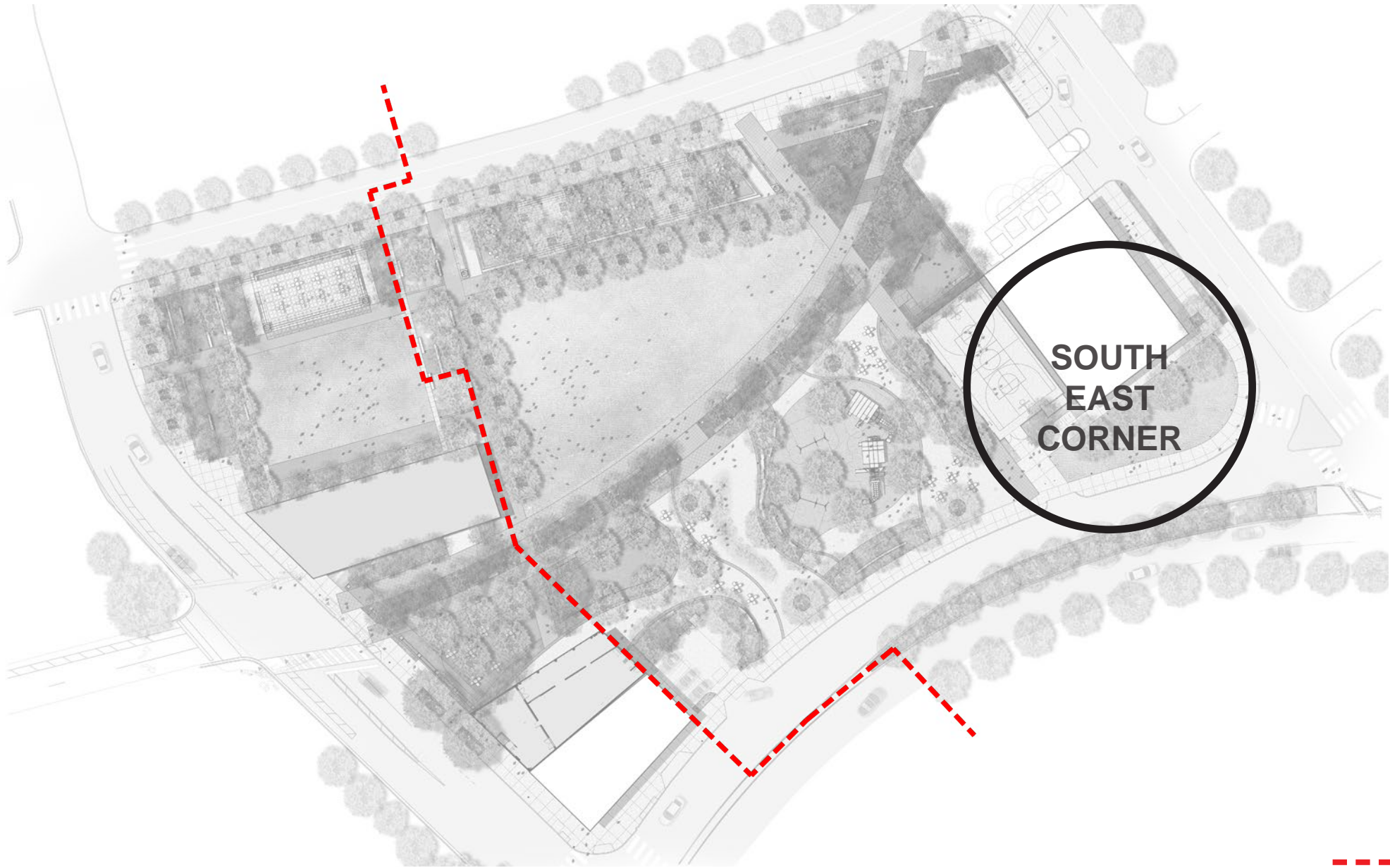


Sabal minor
Dwarf Palmetto



Eupatorium serotinum
Late Boneset

PLANTING PALETTE - UNDERSTORY

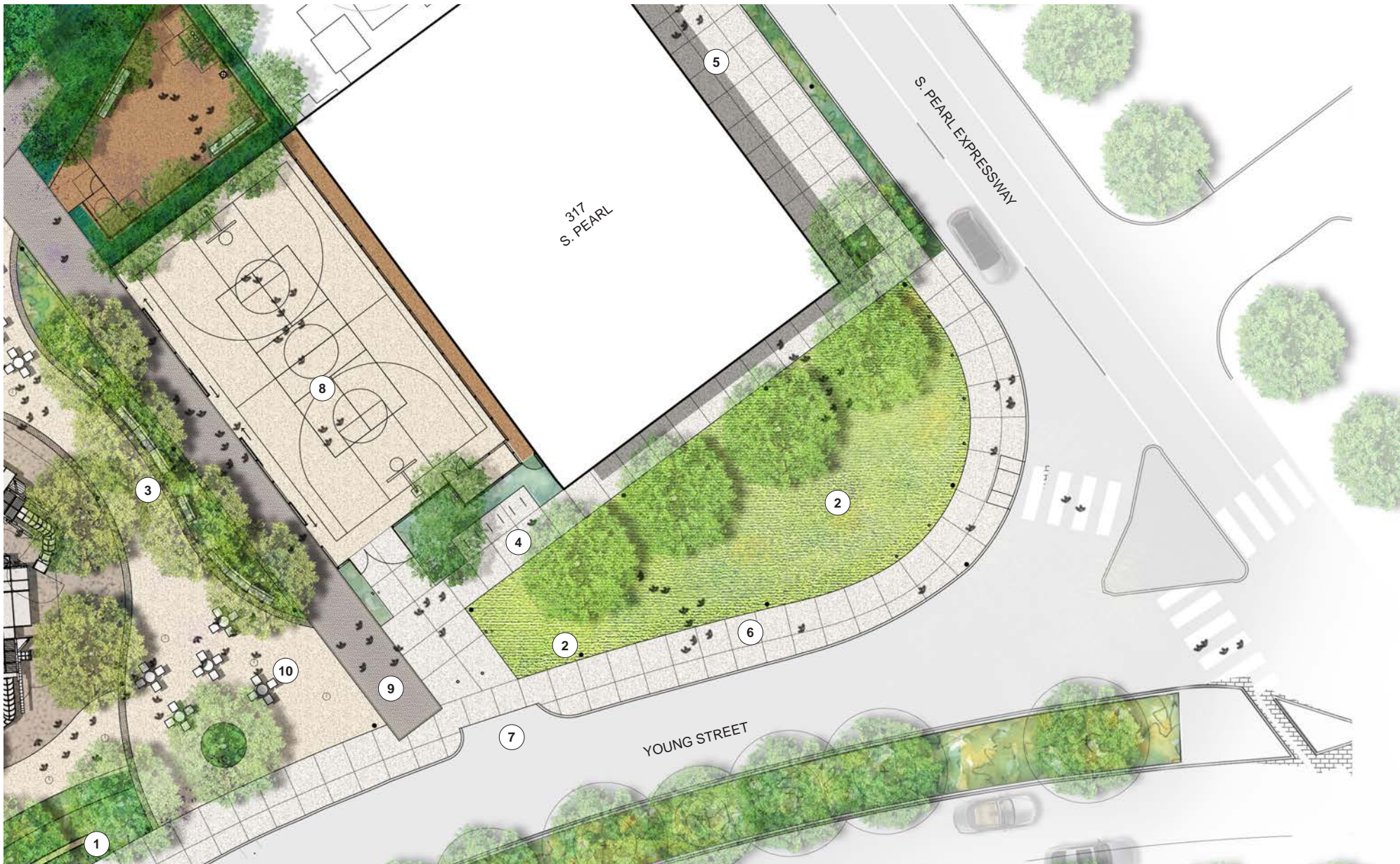


**SOUTH
EAST
CORNER**

--- HARWOOD HISTORIC DISTRICT BOUNDARY

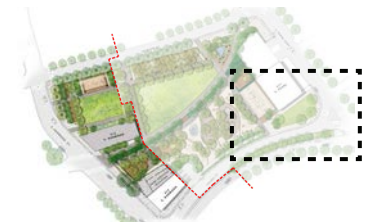
KEY PLAN





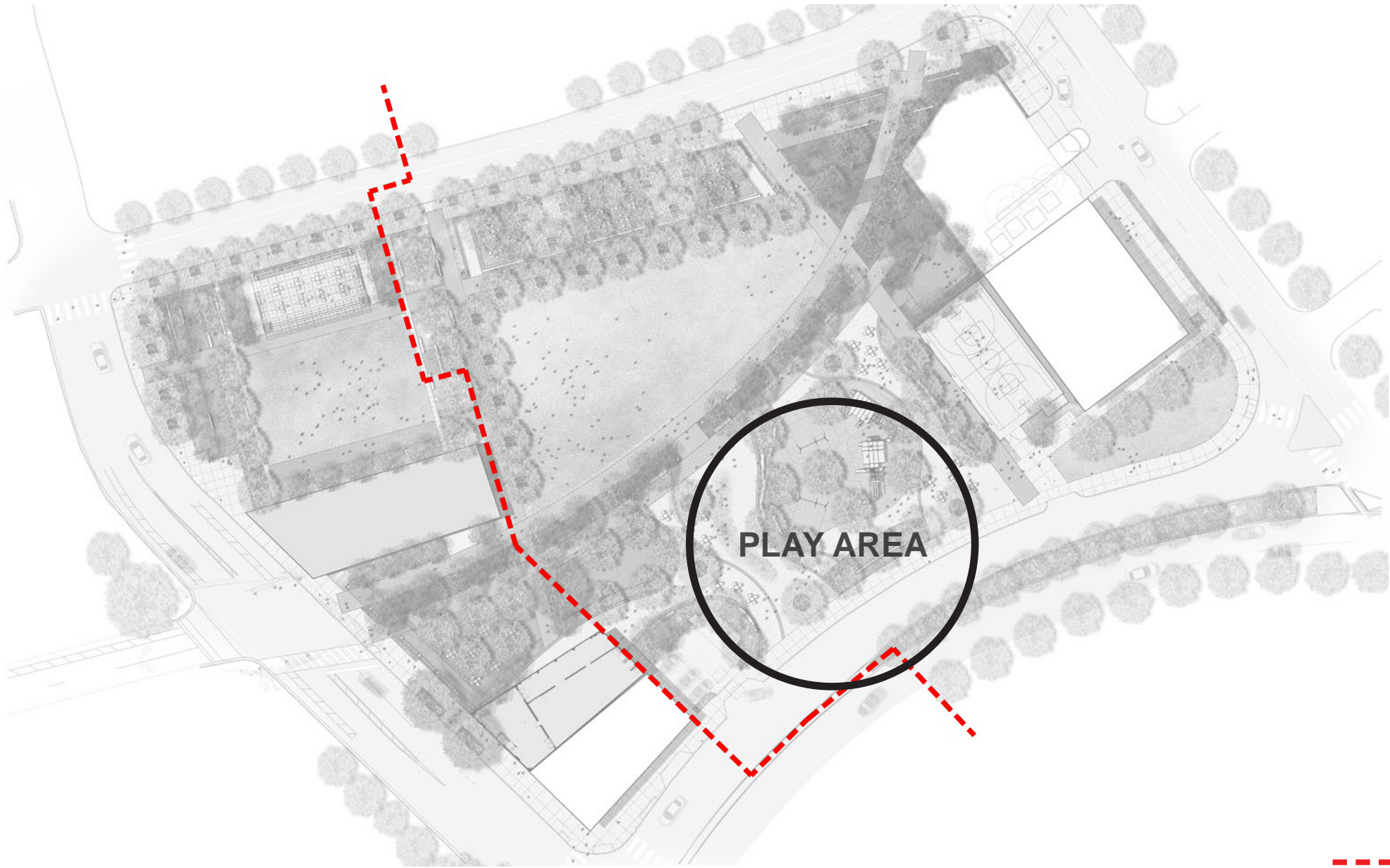
KEY

- 1 SIGNAGE WALL
- 2 DOG INTERCEPT
- 3 BENCH
- 4 BIKE RACKS
- 5 BUILDING ACCESS
- 6 ROW CONCRETE
- 7 EXISTING CURB CUT
- 8 SPORTS COURT
- 9 UNIT PAVING
- 10 SHADE TREES



ENLARGEMENT - SOUTH EAST CORNER

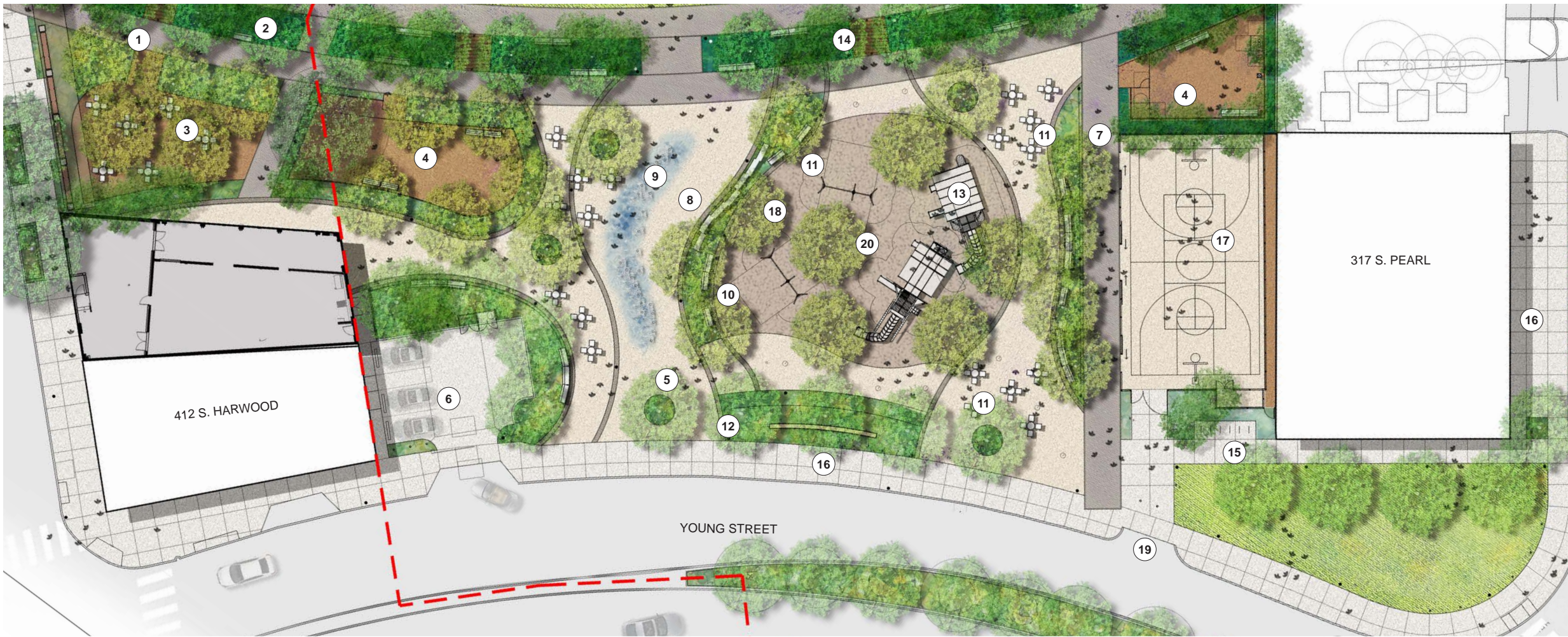




--- HARWOOD HISTORIC DISTRICT BOUNDARY

KEY PLAN

27 HARWOOD PARK | Dallas, TX
URBAN DESIGN PEER REVIEW PANEL



KEY

- | | | | | |
|---------------|---------------|---------------------|--------------------|----------------------|
| 1 PROMENADE | 5 PLAZA | 9 INTERACTIVE W.F. | 13 PLAY STRUCTURE | 17 SPORTS COURT |
| 2 RAIN GARDEN | 6 PARKING | 10 PLANTING AREA | 14 BRIDGE CROSSING | 18 SWINGS |
| 3 GAMES COURT | 7 UNIT PAVING | 11 FLEXIBLE SEATING | 15 BIKE RACKS | 19 EXISTING CURB CUT |
| 4 DOG PARK | 8 BENCHES | 12 SHADE TREES | 16 R.O.W. SIDEWALK | 20 PLAY SURFACING |

--- HARWOOD HISTORIC DISTRICT BOUNDARY

ENLARGEMENT - PLAY AREA

SCALE: 1" = 40'-0"





PERSPECTIVE - MAMMOTH PLAY STRUCTURES

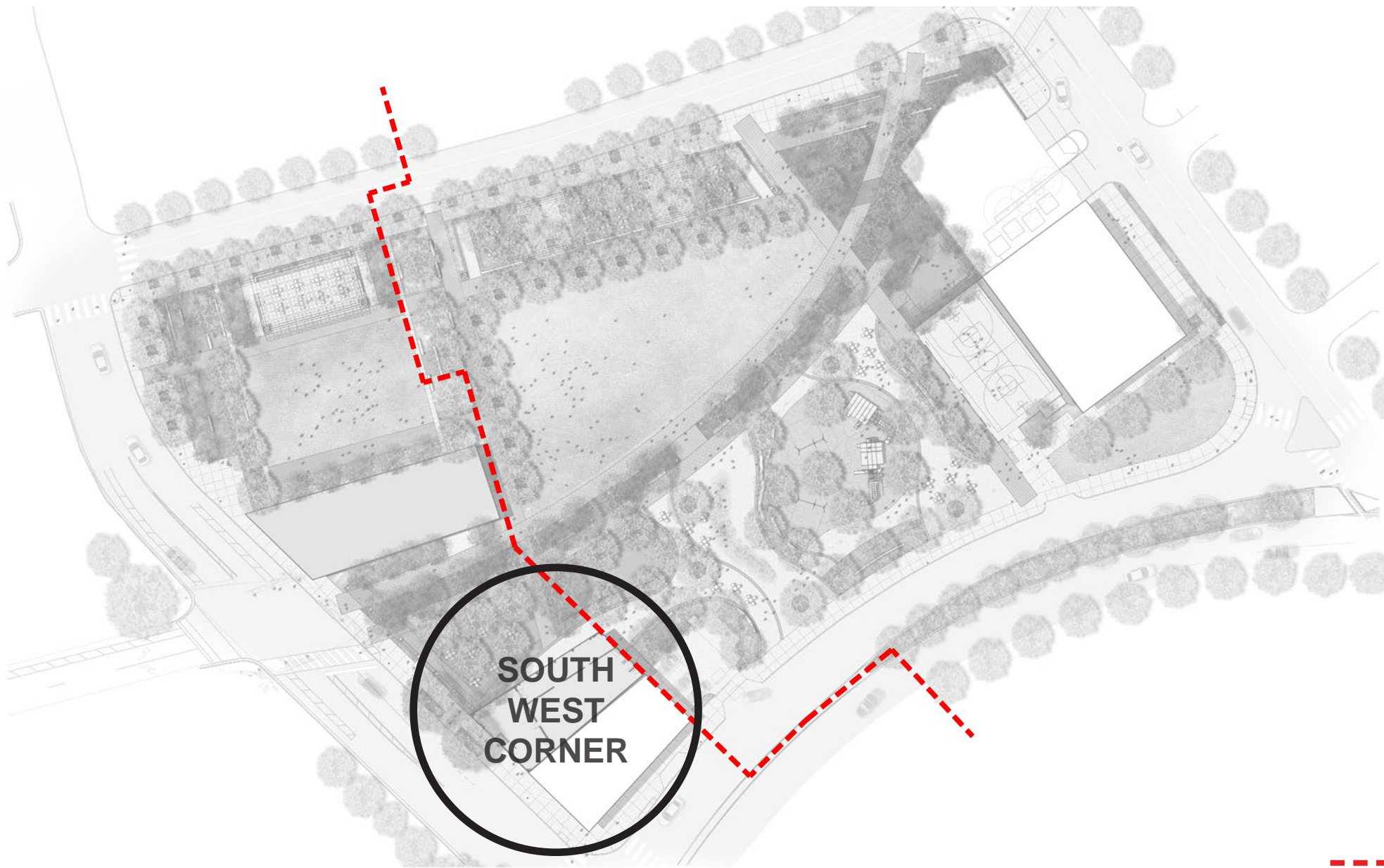
29 HARWOOD PARK | Dallas, TX
URBAN DESIGN PEER REVIEW PANEL



TEN EYCK
LANDSCAPE ARCHITECTS



DETAILS - ADDITIONAL PLAY STRUCTURES



**SOUTH
WEST
CORNER**

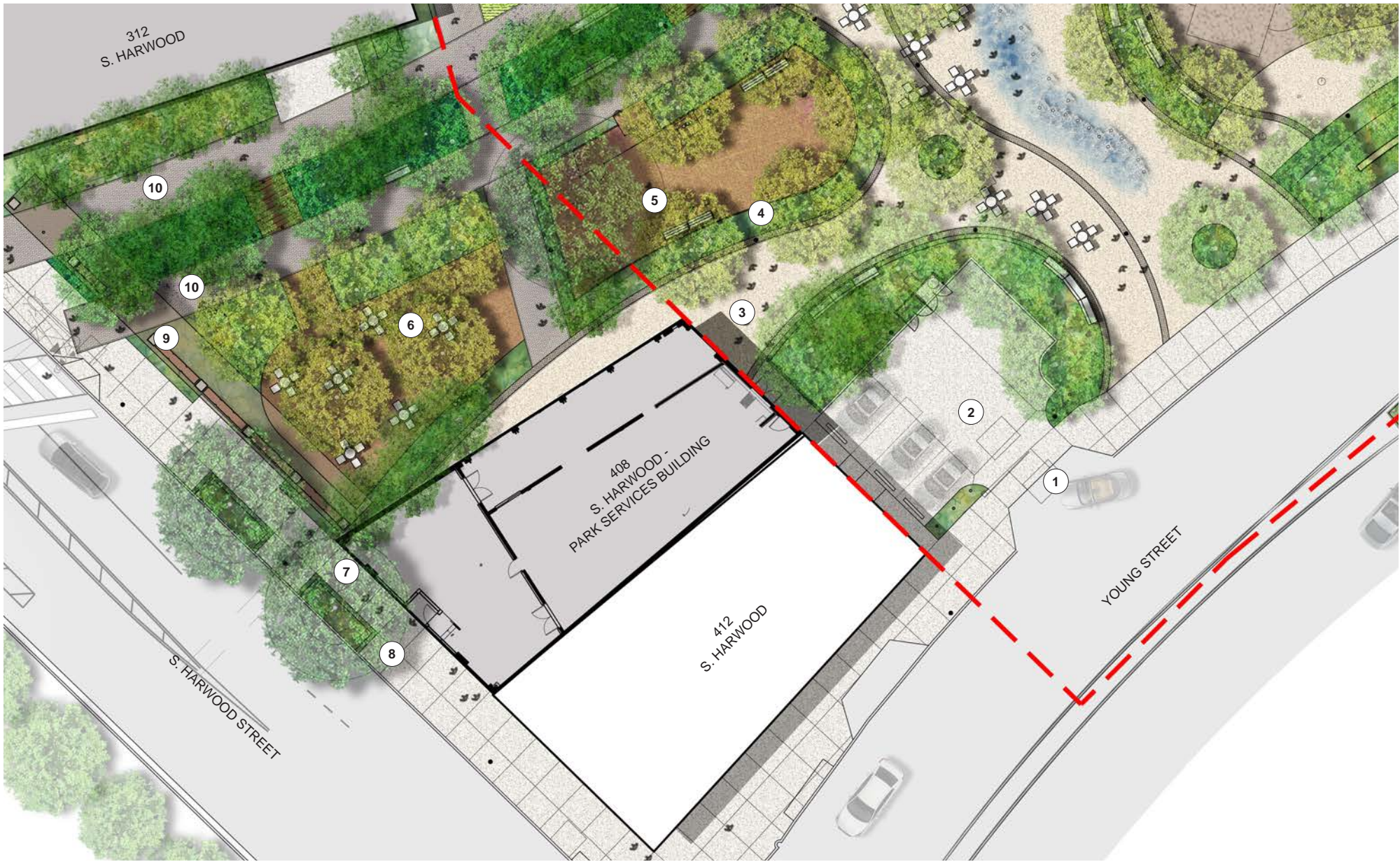
--- HARWOOD HISTORIC DISTRICT BOUNDARY

KEY PLAN

31 HARWOOD PARK | Dallas, TX
URBAN DESIGN PEER REVIEW PANEL



TEN EYCK
LANDSCAPE ARCHITECTS



KEY

- 1 EXISTING CURB CUT
- 2 PARKING
- 3 PLAZA
- 4 PLANTING AREA
- 5 DOG PARK
- 6 GAMES COURT
- 7 R.O.W. SIDEWALK
- 8 EXISTING SHADE TREES
- 9 S. HARWOOD TRELLIS
- 10 PROMENADE
- HARWOOD HISTORIC DISTRICT BOUNDARY



ENLARGEMENT - SOUTH WEST CORNER





PERSPECTIVE - S. HARWOOD ST LOOKING NORTH

33 HARWOOD PARK | Dallas, TX
URBAN DESIGN PEER REVIEW PANEL



TEN EYCK
LANDSCAPE ARCHITECTS

THANK YOU!



PARKS FOR DOWNTOWN DALLAS
For The Greater Good

TEN EYCK
LANDSCAPE ARCHITECTS